



REPLY TO  
ATTENTION OF:

DEPARTMENT OF THE ARMY  
U.S. ARMY ENGINEER DISTRICT, MOBILE DISTRICT  
P.O. BOX 2288  
MOBILE, ALABAMA 36628-0001

June 1, 2020

**CESAM-RD-M**  
**PUBLIC NOTICE NO. SAM-2020-00494-AMR**

**JOINT PUBLIC NOTICE**  
**U.S. ARMY CORPS OF ENGINEERS**

**MISSISSIPPI DEPARTMENT OF ENVIRONMENTAL QUALITY**  
**OFFICE OF POLLUTION CONTROL**

**MISSISSIPPI DEPARTMENT OF MARINE RESOURCES DMR-200308**

**IMPACTS TO AN INTERMITTENT STREAM NORTH OF U.S. HIGHWAY 90**  
**DRAINAGE IMPROVEMENTS, OCEAN SPRINGS, JACKSON COUNTY, MISSISSIPPI**

TO WHOM IT MAY CONCERN: This District has received an application for a Department of the Army permit pursuant to Section 404 of the Clean Water Act .Please communicate this information to interested parties.

APPLICANT: **City of Ocean Springs**  
Post Office Box 1800  
Ocean Springs, Mississippi 39565

AGENT: **Compton Engineering, Inc.**  
Attention: Ms. Lisa Morrison  
156 Nixon Street,  
Biloxi, Mississippi 39530

LOCATION: The project is located north of U.S. Highway 90, east of McDonald's Restaurant, Ocean Springs, Jackson County, Mississippi, centered on Latitude: 30.413704 North, Longitude -88.753269 West.

WORK DESCRIPTION: The applicant proposes to reshape 861 linear feet (LF) of intermittent stream located north of U.S. Highway 90 and east of McDonald's Restaurant, Ocean Springs, Mississippi. The stream intersects with the stream along U.S. Highway 90. Rip rap will be placed on the side slopes after being re-shaped to a 2:1 ratio. The accumulated sediment will be excavated and the channel graded to original elevation. Excavated sediments will be placed into trucks and stored in uplands at the contractor facility for recycling. The channel bottom will remain natural and not receive any rip rap fill.

PURPOSE: The existing stream channel has numerous areas of erosion and slope failure, causing sediment deposition downstream that is obstructing flow. The reshaped and armored channel will minimize erosion and sediment transport downstream which will minimize the need for future maintenance.

MITIGATION: No Mitigation is proposed.

WATER QUALITY: The applicant has applied for certification from the State of Mississippi in accordance with Section 401(a)(1) of the Clean Water Act and upon completion of the required advertising; a determination relative to certification will be made.

COASTAL ZONE MANAGEMENT AREA CONSISTENCY: The applicant has applied for coastal zone consistency from the State of Mississippi Department of Marine Resources in accordance with Section 57-15-6 of the Mississippi Code Annotated (DMR-200308).

HISTORIC PROPERTIES/CULTURAL RESOURCES: In accordance with Section 106 of the National Historic Preservation Act, and Appendix C of 33 CFR 325, the undertaking defined in this notice is being considered for the potential to effect cultural and historic properties within the permit area. In accordance with Appendix C of 33 CFR Part 325, the USACE has determined that the permit area is the 861 feet long x 25 feet wide stream channel area. The USACE has determined that the proposed project would have "No Potential to Effect" cultural resources in the permit area. However, we are seeking comment from the State Historic Preservation Officer, Federally--recognized American Indian tribes, local historical societies, museums, universities, the National Park Service, and the general public regarding the existence or the potential for existence of significant cultural and historic properties which may be affected by the work.

THREATENED AND ENDANGERED SPECIES: Preliminary review of this application and the U.S. Department of the Interior List of Endangered and Threatened Wildlife and Plants indicated the following species may be present within the project area: the Alabama Red-bellied Turtle (*Pseudemys alabamensis*) (E), Dusky Gopher Frog (*Rana sevosia*) (E), Gopher Tortoise (*Gopherus polyphemus*) (T), Gulf Sturgeon (*Acipenser oxyrinchus desotoi*) (T), Loggerhead Sea Turtle (*Caretta caretta*) (T), Mississippi Sandhill Crane (*Grus canadensis pulla*) (E), Piping Plover (*Charadrius melodus*) (T), Red Knot (*Calidris canutus rufa*) (T), West India manatee (*Trichechus manatus*) (T), and the Wood Stork (*Mycteria americana*) (T). The review of the above species suggests that the proposed activity will have no effect on the listed species with the exception of the Wood Stork. The project is not likely to adversely affect the Wood Stork. This determination is being coordinated with the U.S. Fish and Wildlife Service via this public notice and will be submitted to the National Marine Fisheries Service for coordination via their website.

ESSENTIAL FISH HABITAT: This notice initiates the Essential Fish Habitat (EFH) consultation requirements of the Magnuson-Stevens Fishery Conservation and Management Act. The proposal includes impacting an area approximately 861 LF of waters within an existing stream system. The project area includes no resources that would be utilized by various life stages of various marine species. Our initial determination is that the proposed action would not have a substantial adverse impact on EFH or Federally managed fisheries. Our final determination relative to project impacts and the need for mitigation measures is subject to review by and coordination with the National Marine Fisheries Service.

This public notice is being distributed to all known interested persons in order to assist in developing facts on which a decision by the U.S. Army Corps of Engineers (USACE) can be based. For accuracy and completeness of the record, all data in support of or in opposition to the proposed work should be submitted in writing setting forth sufficient detail to furnish a clear understanding of the reasons for support or opposition.

The decision whether to issue a permit will be based on an evaluation of the probable impacts, including cumulative impacts, of the proposed activity on the public interest. That decision will reflect the national concern for both protection and utilization of important resources. The benefit which reasonably may be expected to accrue from the proposal must be balanced against its reasonably foreseeable detriments. All factors which may be relevant to the proposal will be considered, including the cumulative effects thereof; among those are conservation, economics, aesthetics, general environmental concerns, wetlands, historic properties, fish and wildlife values, flood hazards, floodplain values, land use, navigation, shoreline erosion and accretion, recreation, water supply and conservation, water quality, energy needs, safety, food and fiber production, mineral needs, consideration of property ownership and, in general, the needs and welfare of the people.

The USACE is soliciting comments from the public; federal, state, and local agencies and officials; Indian tribes; and other interested parties in order to consider and evaluate the impacts of this proposed activity. Any comments received will be considered by the USACE to determine whether to issue, modify, condition or deny a permit for this proposal. To make this decision, comments are used to assess impacts on endangered species, historic properties, water quality, general environmental effects, and the other public interest factors listed above. Comments are used in the preparation of an Environmental Assessment and/or an Environmental Impact Statement pursuant to the National Environmental Policy Act. Comments are also used to determine the need for a public hearing and to determine the overall public interest of the proposed activity.

Any person may request in writing, within the comment period specified in this notice, that a public hearing be held to consider this application. Requests for public hearings shall state, with particularity, the reasons for holding a public hearing.

Evaluation of the probable impacts involving deposits of dredged or fill material into waters of the United States will include the application of guidelines established by the Administrator of the U.S. Environmental Protection Agency.

Correspondence concerning this Public Notice should refer to Public Notice Number **SAM-2020-00494-AMR** and should be directed to USACE, Mobile District, Regulatory Division, Attention: **Ms. Angela M. Rangel**, Post Office Box 2288, Mobile, Alabama 36628-0001, with a copy to the Mississippi Department of Environmental Quality, Office of

Pollution Control, Environmental Permitting Division, Attention: **Ms. Florance Bass**, Post Office Box 2261, Jackson, Mississippi 39225, and the Mississippi Department of Marine Resources, Attention: **Mr. Adam Terrell**, 1141 Bayview Avenue, Suite 101, Biloxi, Mississippi

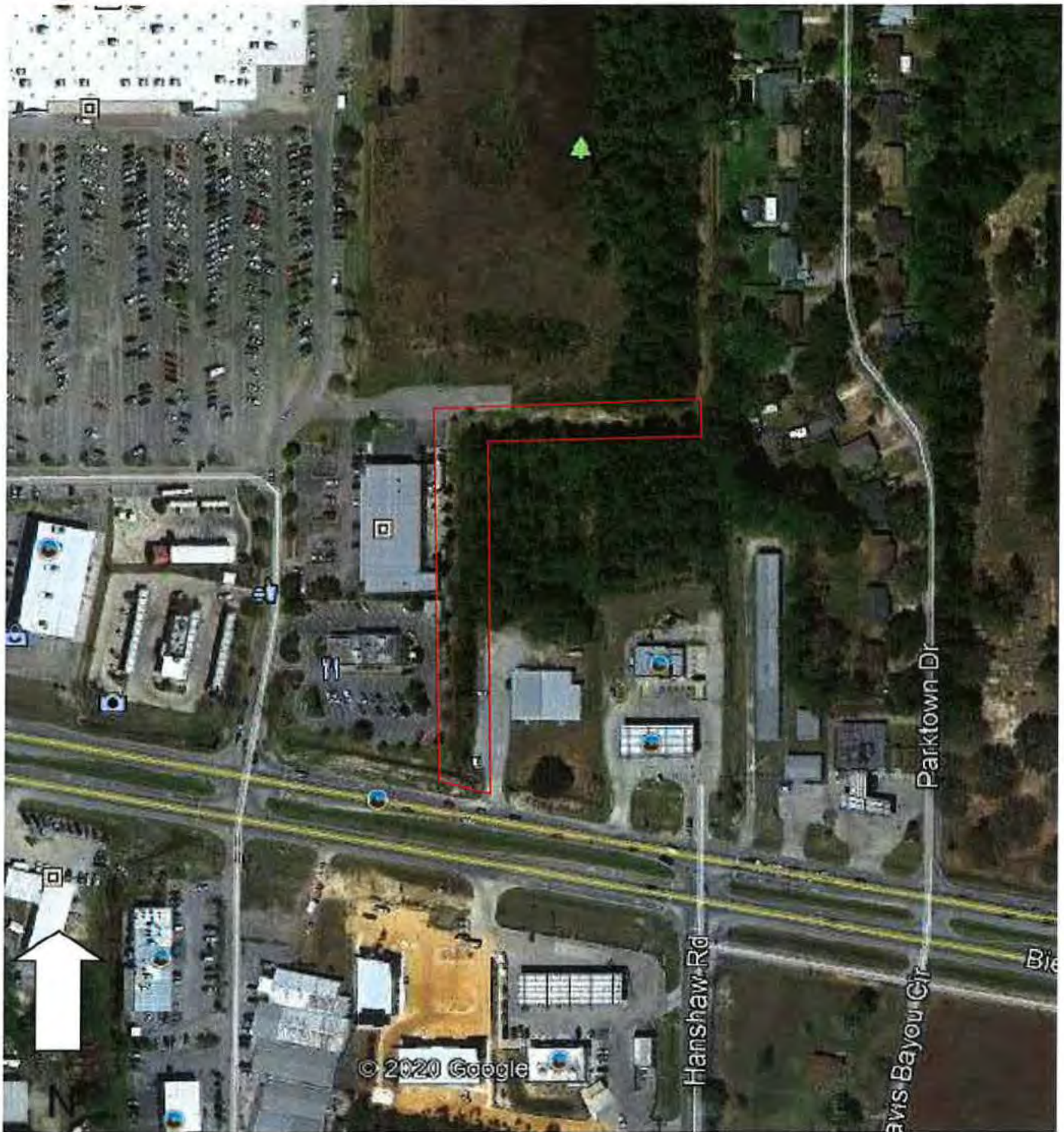
**All comments should be received no later than 30 days from the date of this Public Notice.** If you have any questions concerning this publication, you may contact the project manager, at (251) 694-3873 or email at [angela.m.rangel@usace.army.mil](mailto:angela.m.rangel@usace.army.mil). Please refer to the above Public Notice number.

For additional information about our Regulatory Program, please visit our web site at [www.sam.usace.army.mil/Missions/Regulatory.aspx](http://www.sam.usace.army.mil/Missions/Regulatory.aspx).

MOBILE DISTRICT  
U.S. Army Corps of Engineers

Enclosures





**COMPTON ENGINEERING, INC.**  
Engineering, Surveying, and Environmental Services  
156 Nixon Street  
Biloxi, Mississippi 39530  
Phone: (228) 432-2133 Fax: (228) 432-8149  
E-mail: [compton@comptonengineering.com](mailto:compton@comptonengineering.com)

Site: Ocean Springs CDBG Drainage Project  
Highway 90 Ditch  
Ocean Springs, Jackson County, MS  
SAM-2020-00494-AMR

Figure Title: **Aerial Imagery** (Map Source: Google Earth, Imagery date 8/25/15)

Appendix ID:





SAM-2020-00494-AMR



**COMPTON ENGINEERING, INC.**

ENGINEERING, SURVEYING & ENVIRONMENTAL SERVICES

PASCAGOULA • BILOXI • BAY ST. LOUIS

228-762-3970 228-432-2133 228-467-2770

www.comptonengineering.com

219-022

CITY OF OCEAN SPRINGS,  
 PARKTOWN AREA IMPROVEMENTS,  
 HWY 90 WETLAND DELINEATION,  
 SHEET 2

SCALE: 1"=30'

DRN. BY: JDL





SAM-2020-00494-AMR



**COMPTON ENGINEERING, INC.**  
 ENGINEERING, SURVEYING & ENVIRONMENTAL SERVICES  
 PASCAGOULA • BILOXI • BAY ST. LOUIS  
 228-762-3970 228-432-2133 228-467-2770  
 www.comptonengineering.com

219-022  
 CITY OF OCEAN SPRINGS,  
 PARKTOWN AREA IMPROVEMENTS,  
 HWY 90 WETLAND DELINEATION,  
 SHEET 3  
 SCALE: 1"=30'  
 DRN. BY: JDL



SAM-2020-00494-AMR



# COMPTON ENGINEERING, INC.

ENGINEERING, SURVEYING & ENVIRONMENTAL SERVICES

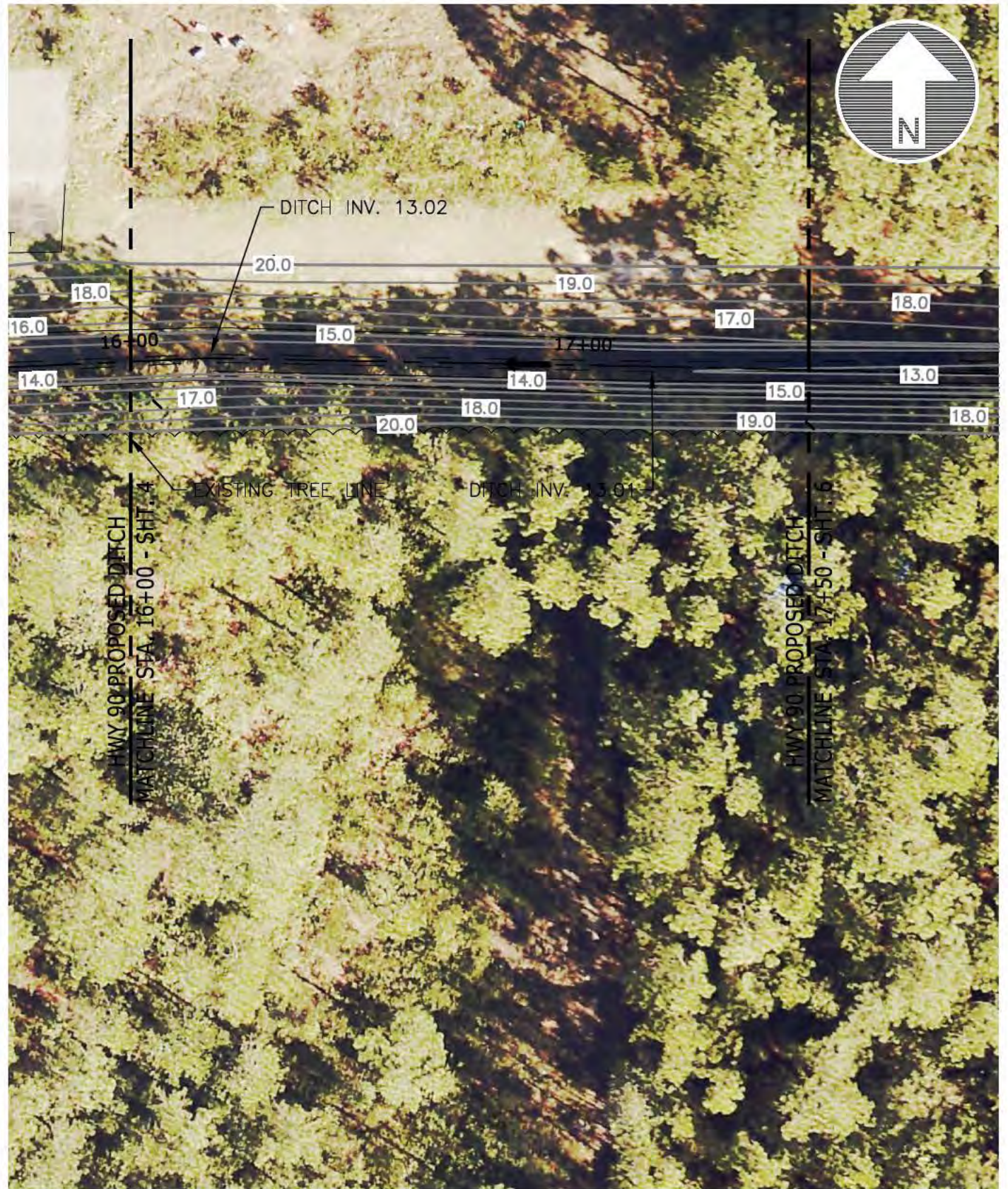
PASCAGOULA • BILOXI • BAY ST. LOUIS  
228-762-3970 228-432-2133 228-467-2770  
www.comptonengineering.com

219-022

CITY OF OCEAN SPRINGS,  
PARKTOWN AREA IMPROVEMENTS,  
HWY 90 WETLAND DELINEATION,  
SHEET 4  
SCALE: 1"=30'  
DRN. BY: JDL







SAM-2020-00494-AMR



**COMPTON ENGINEERING, INC.**

ENGINEERING, SURVEYING & ENVIRONMENTAL SERVICES

PASCAGOULA • BILOXI • BAY ST. LOUIS

228-762-3970 228-432-2133 228-467-2770

[www.comptonengineering.com](http://www.comptonengineering.com)

219-022

CITY OF OCEAN SPRINGS,  
PARKTOWN AREA IMPROVEMENTS,  
HWY 90 WETLAND DELINEATION,  
SHEET 5

SCALE: 1"=30'

DRN. BY: JDL





SAM-2020-00494-AMR



**COMPTON ENGINEERING, INC.**

ENGINEERING, SURVEYING & ENVIRONMENTAL SERVICES

PASCAGOULA • BILOXI • BAY ST. LOUIS

228-762-3970 228-432-2133 228-467-2770

[www.comptonengineering.com](http://www.comptonengineering.com)

219-022

CITY OF OCEAN SPRINGS,  
PARKTOWN AREA IMPROVEMENTS,  
HWY 90 WETLAND DELINEATION,  
SHEET 6

SCALE: 1"=30'

DRN. BY: JDL



**COMPTON ENGINEERING, INC.**  
ENGINEERING, SURVEYING & ENVIRONMENTAL SERVICES  
PASCAGOULA • BILOXI • BAY ST. LOUIS  
228-762-3970 228-432-2133 228-467-2770  
[www.comptonengineering.com](http://www.comptonengineering.com)