

April 4, 2023

Mr. Jaricus Whitlock, PE
Air II Branch Chief
Mississippi Department of Environmental Quality
P.O. Box 2261
Jackson, Mississippi 39225-2261



Re: **Hot Mix Asphalt Notice of Intent**
AJ Construction, Inc. – Hazlehurst Plant
Hazlehurst, Mississippi (Copiah County)

Dear Mr. Whitlock:

AJ Construction, Inc. (AJC) has retained the services of Environmental Compliance & Safety, Inc. (ECS) to prepare a Hot Mix Asphalt Notice of Intent (HMANOI) and Storm Water Pollution Prevention Plan (SWPPP) for coverage under Mississippi's Hot Mix Asphalt General Permit for the planned construction and operation of a Hot Mix Asphalt Plant to be located in Hazlehurst, Mississippi (Copiah County).

The equipment associated with the proposed asphalt plant will be portable so it can be readily moved from one location to another (additional requests for coverage will be submitted for each potential site). Equipment associated with the portable plant includes generator sets to provide power for the plant, fuel storage tanks (i.e., diesel, fuel oil), and the asphalt plant itself. AJC intends for the plant to operate at the proposed site for a short period (i.e., less than a year) before moving to another location. AJC will be installing the equipment associated with the asphalt plant within the Hammett Gravel Pit footprint. Since the gravel pit has already been disturbed and the site is clear, there will not be any additional land disturbing activities associated with the construction of the asphalt plant that would require coverage under the Small Construction Stormwater General Permit.

Enclosed, you will find completed copies of the HMANOI in Attachment A and the SWPPP in Attachment B. A copy of the public notice that is to be published on April 10, 2023, is provided in Attachment C. Proof of publication will be provided to you via email once it is received. Information concerning the Contiguous Landowner Notifications is provided in Attachment D. The return receipts will be provided to you via email as they are received. The Certificate of Good Standing is included in Attachment E.

**Hot Mix Asphalt Notice of Intent
AJ Construction, Inc. – Hazlehurst Plant**

April 4, 2023

Page 2

If you have any questions or concerns regarding the enclosed information, please contact me at (662) 840-5945 or John Harreld, Jr. of AJC at (601) 667-3667.

Sincerely,



B.J. Hailey
Senior Project Manager

Attachments: Attachment A – Hot Mix Asphalt Notice of Intent (HMANOI)
Attachment B – Storm Water Pollution Prevention Plan
Attachment C – Hot Mix Asphalt General Permit Public Notice
Attachment D – Contiguous Landowner Notifications
Attachment E – Certificate of Good Standing

cc: John C. Harreld, Jr., AJ Construction, Inc.

ATTACHMENT A

HOT MIX ASPHALT NOTICE OF INTENT (HMANOI)

MISSISSIPPI DEPARTMENT OF
ENVIRONMENTAL QUALITY

HOT MIX ASPHALT NOTICE OF INTENT FORM

COVERAGE NO.: MSR70 0112

(Coverage number is located at the bottom left corner of your previous Certificate of Coverage.

Leave blank if applying for new coverage.)MISSISSIPPI DEPARTMENT OF
ENVIRONMENTAL QUALITY

COVERAGE ACTION REQUESTED



New



Recovery



Modification*

*If submitting a modification, include the Change Request Form available at www.mdeq.ms.gov/hmagp.

FACILITY INFORMATION

Company Name: AJ Construction, Inc. Facility Name: AJ Construction, Inc. - Hazlehurst Plant

Contact Name: John C. Harreld, Jr. Contact Title: President

Contact Phone: (601) 540-5731 Contact Email: john@ajc-ms.com

Physical Site Address: Street: Highway 28

City: Hazlehurst State: MS Zip: 39083

Mailing Address: Street: P.O. Box 2024

City: Madison State: MS Zip: 39130

GPS Coordinates at Plant Entrance

GPS Coordinates (Degrees/Minutes/Seconds): Latitude: 31/53/21.47 Longitude: 90/17/17.47

Collection Method (e.g., GPS, Google Earth, etc.): Google Earth

ASPHALT PLANT INFORMATION

Type of Asphalt Plant: ☐ Batch ☒ Drum Maximum Asphalt Production Rate: 275 tons/hr
(Maximum production rate should be based on the manufacturer's maximum rated plant capacity, on an hourly basis.)

Manufactured Date of Asphalt Plant: July 2008 Date plant was last relocated: N/A

(If a New Plant, enter "N/A" for manufactured date, date of last relocation, date of testing, etc.)

Date of Most Recent Particulate Matter (PM) Stack Test on Asphalt Plant: Unknown

Is the Asphalt Plant currently at the site? ☐ YES ☒ NO If No, what date was it removed? ☐ N/A

Asphalt Dryer Rated Capacity: 96.0 MMBtu/hr

Dryer Fuels Used: ☐ Natural Gas ☐ LPG ☒ Fuel Oil ☒ On-Spec Used Oil ☐ Bio-derived Liquid
(Mark all applicable fuels which may be burned.)

ROCK / RECYCLED ASPHALT PAVEMENT (RAP) CRUSHER INFORMATION

Do you own or operate a rock or RAP crusher at the site? ☐ YES* ☒ NO

(*If YES, complete the remainder of this section. If only a third party will own/operate a rock/RAP crusher at your site, mark NO. The third party is responsible for obtaining any necessary air permits to operate the rock crusher.)

Will crushed material be provided to a plant other than the co-located HMA plant? ☐ YES ☐ NO

ROCK / RECYCLED ASPHALT PAVEMENT (RAP) CRUSHER INFORMATION (continued)

Crusher Type & Rated Cumulative Capacity: ☐ Fixed: N/A tons/hr ☐ Portable: N/A tons/hr

Date Rock/RAP Crusher Manufactured: N/A

Date of modification/reconstruction of Rock/RAP Crusher: N/A ☒ N/A

Is Rock/RAP Crusher controlled by a baghouse or fabric filter? ☐ YES ☐ NO

Date of most recent Particulate Matter (PM) stack test on Rock/RAP Crusher: _____ or ☒ N/A

Date of most recent Opacity (Method 9) Evaluation on Crusher and Transfer Points: _____ or ☒ N/A

OTHER AIR EMISSION SOURCES

Will you operate stationary emergency engines at the site? ☐ YES ☒ NO

(Note that stationary non-emergency engines are not allowed under this General Permit.)

If YES, number of emergency engines at the site:

For each emergency engines, indicate fuel, size (horsepower), and manufactured date:

Fuel: _____ hp Date: _____

Fuel: _____ hp Date: _____

Fuel: _____ hp Date: _____

Will you operate a "gasoline dispensing facility" (see ACT6 of HMAGP for definition)? ☐ YES ☒ NO

The facility will use generator engines to provide power for the site. These engines are trailer mounted and considered portable engines (will not operate in same location for 12 consecutive months).

STORMWATER FROM INDUSTRIAL AND CONSTRUCTION ACTIVITIES

Nearest named waterbody which stormwater leaving the site will enter: Unnamed tributary to Covich Creek

Is a copy of the SWPPP attached? ☒ YES ☐ NO If no, last Revision Date: _____

(A copy of the SWPPP must be attached for a New HMA plant.)

If the SWPPP is based on the Industry Generic SWPPP, is it the most recent copy? ☐ YES ☐ NO ☒ N/A

Does the SWPPP meet the requirements of ACT4 of the HMAGP? ☒ YES ☐ NO

(If NO, an amended SWPPP must be submitted before the NOI can be processed.)

Are construction activities (e.g., clearing, grading, etc.) required or ongoing at the site? ☐ YES ☒ NO

If YES, does the total acreage of the construction activities equal or exceed 5.0 acres? ☐ YES ☐ NO

I certify under penalty of law that this document and all attachments were prepared under my direction or supervision in accordance with a system designed to assure that qualified personnel properly gathered and evaluated the information submitted. Based on my inquiry of the person or persons who manage the system, or those persons directly responsible for gathering the information, the information submitted is, to the best of my knowledge and belief, true, accurate and complete. I am aware that there are significant penalties for submitting false information, including the possibility of fines and imprisonment for knowing violations.

I further certify that the project continues as described in the original notice of intent. Also, I certify that I understand when coverage is terminated I am no longer authorized to emit regulated air emissions and discharge wastewater or storm water associated with industrial activity under this general permit. I understand that discharging pollutants associated with industrial activity to waters of the state without NPDES coverage is in violation of state law.

Authorized Signature (shall be signed according to ACT5, T-5 of the GP)

Date Signed

John C. Harreld, Jr.

President

(601) 540-5731

Printed Name

Title

Phone

P.O. Box 2024, Madison, MS 39130

john@ajc-ms.com

Address

Email

ATTACHMENT B

STORM WATER POLLUTION PREVENTION PLAN

STORM WATER POLLUTION PREVENTION PLAN (SWPPP)



**AJ Construction, Inc. – Hazlehurst Plant
Highway 28
Hazlehurst, MS 39083**

Post Office Box 356 | Sherman, Mississippi 38869
Office: (662) 840-5945 | Fax: (662) 840-5965
www.envirocomp.net

“FOR ALL YOUR ENVIRONMENTAL AND SAFETY CONSULTING NEEDS.”

TABLE OF CONTENTS

	<u>Page</u>
TABLE OF CONTENTS	i
RECORD OF REVISIONS	iii
1.0 STORM WATER POLLUTION PREVENTION PLAN (SWPPP) CERTIFICATION	1
2.0 SWPPP OVERVIEW	2
2.1 Introduction	2
2.2 General Information	3
2.3 SWPPP Objectives	3
2.4 SWPPP Elements	3
3.0 FACILITY INFORMATION	5
3.1 Site Characteristics	5
3.2 Process Description	5
3.3 Site Security	5
3.4 Site Drainage and Storm Water Outfalls	6
3.5 Allowable Non-Storm Water Discharges	6
4.0 STORM WATER POLLUTION PREVENTION TEAM	8
5.0 SIGNIFICANT EXPOSED MATERIALS AND CONTROL MEASURES	9
5.1 Materials Exposed and Best Management Practices	9
5.2 Structural and Nonstructural Controls	10
5.3 List of Significant Spills or Leaks	11
5.4 Summary of Existing Storm Water Sampling Data	11
6.0 BMP SCHEDULES AND PROCEDURES	12
6.1 Good Housekeeping	12
6.2 Preventive Maintenance	13
6.3 Spill Prevention and Response	13
6.4 Routine Visual Inspections	14
6.5 Employee Training	15
6.6 Non-Storm Water Discharge Certification	16
6.7 Sediment and Erosion Controls	16
6.8 Storm Water Discharge Limitations	16
6.9 Storm Water Treatment	16
7.0 ANNUAL FACILITY INSPECTION AND SWPPP EVALUATION	17
7.1 Annual SWPPP Evaluation	17
7.2 SWPPP Update	17
7.3 Noncompliance Reporting	17
7.4 Retention of Records	17

8.0	SARA TITLE III, SECTION 313 FACILITY REQUIREMENTS	18
8.1	Section 313 Water Priority Chemicals	18
8.2	Section 313 WPC Storage, Processing, and Handling.....	18
8.3	Preventive Maintenance and Housekeeping	18
8.4	Facility Security	19
8.5	Training	19
8.6	Storm Water Monitoring	19

FIGURES:

Figure 1:	Site Location Map
Figure 2:	Aerial Map
Figure 3:	Storm Water Flow Diagram

APPENDICES:

Appendix A:	Monthly Storm Water Inspection Form
Appendix B:	Monthly Spill & Leak Log Sheet
Appendix C:	Personnel Training Log
Appendix D:	Annual SWPPP Evaluation Form
Appendix E:	Non-Storm Water Discharge Evaluation
Appendix F:	Hot Mix Asphalt General Permit

RECORD OF REVISIONS

Revision Date	Reason for Revision	Revised Pages, Tables, Figures, or Appendices	Person(s) Responsible for Revisions
04/03/2023	Developed SWPPP to comply with Hot Mix Asphalt General Permit	Entire document	B.J. Hailey (ECS) Jake Rucker (ECS)

1.0 STORM WATER POLLUTION PREVENTION PLAN (SWPPP) CERTIFICATION

I certify under penalty of law that this document and all attachments were prepared under my direction or supervision in accordance with a system designed to assure that qualified personnel properly gathered and evaluated the information submitted. Based on my inquiry of the person or persons who manage the system, or those persons directly responsible for gathering the information, the information submitted is, to the best of my knowledge and belief, true, accurate, and complete. I am aware that there are significant penalties for submitting false information, including the possibility of fine and imprisonment for knowing violations.


Signature

John C. Harreld, Jr.

Name (Printed)

AJ Construction, Inc.

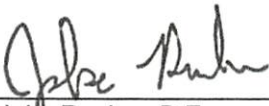
Company

4-4-23
Date

President

Title

The Storm Water Pollution Prevention Plan (SWPPP) was prepared in accordance with sound engineering practices and identifies potential sources of pollution, which may reasonably be expected to affect the quality of storm water discharges associated with industrial activity from the facility. The SWPPP describes and ensures the implementation of best management practices, which will reduce pollutants in storm water discharges and assure compliance with the terms and conditions of the Hot Mix Asphalt General Permit. The information presented herein constitutes a true and accurate representation of the information, findings, and observations made during the site investigation and preparation of the plan.


Jake Rucker, P.E.
Team Leader, Project Engineer
Environmental Compliance & Safety, Inc.

April 3, 2023

Date

State of Mississippi
Registration No. 29189



2.0 SWPPP OVERVIEW

2.1 Introduction

A Storm Water Pollution Prevention Plan (SWPPP) for facility operations has been prepared in accordance with the Mississippi Department of Environmental Quality (MDEQ) regulations, the MDEQ Hot Mix Asphalt General Permit (HMAGP), and the Federal Regulations codified in 40 CFR 122, 123, and 124 which require facilities with storm water discharges associated with certain industrial activities to apply for permit coverage in accordance with the National Pollutant Discharge Elimination System (NPDES). Storm water discharges associated with industrial activities include, but are not limited to, storm water discharges from industrial plant yards; material handling sites; storage and maintenance of material handling equipment; shipping and receiving areas; manufacturing buildings; storage areas (including tank farms) for raw materials and intermediate and final products; and areas where industrial activity has taken place in the past and significant materials remain and are exposed to storm water. Material handling activities include storage, loading and unloading, transportation, or conveyance of any raw material, intermediate product, final product, by-product or waste product. Industrial activities do not include areas located on plant lands separate from the plant's industrial activities, such as office buildings and accompanying parking lots as long as the drainage from the excluded areas is not mixed with storm water drained from the above described areas.

AJ Construction, Inc. – Hazlehurst Plant (AJC), located inside the footprint of the Hammett Gravel Company's gravel pit located off Highway 28 in Hazlehurst, Mississippi, is classified under Standard Industrial Classification (SIC) Code 2951, Asphalt Paving Mixtures and Blocks (NAICS Code 324121, Asphalt Paving Mixtures and Block Manufacturing). The HMAGP authorizes facilities which operate under SIC Code 2951, to construct and operate air emissions equipment and to discharge storm water related to the manufacturing of asphalt and tar paving mixtures in accordance with limitations, monitoring requirements, and other conditions of the HMAGP.

AJC has prepared a SWPPP for operations at the Hazlehurst, Mississippi location. This SWPPP was developed and will be implemented in accordance with the requirements of the MDEQ HMAGP. The SWPPP follows the guidelines presented in the MDEQ *SWPPP Guidance Manual for Industrial Facilities*.

The SWPPP identifies potential sources of pollution that may affect the quality of storm water discharges associated with industrial activity, evaluates the risk of storm water discharges from these sources, and presents the management practices that will be used at the facility for minimization of pollutants in storm water discharges. All reports and certifications required by the HMAGP will be signed by a responsible corporate officer or duly authorized representative who has responsibility for the overall facility operations or overall responsibility for environmental matters. The SWPPP will be retained onsite at all times and made available upon request to an authorized representative of the MDEQ and/or United States Environmental

Protection Agency (EPA). The SWPPP will be amended whenever there is a change in construction, operation, maintenance, or footprint of the facility that may affect the discharge of storm water.

2.2 General Information

Site Name:	AJ Construction, Inc. – Hazlehurst Plant			
Mailing and Physical Address:	P.O. Box 2024, Madison, MS 39130 (mailing) Highway 28, Hazlehurst, MS 39083			
Location (GPS):	Latitude:	31° 52' 59.43" N	Longitude:	90° 17' 27.09" W
SWPPP Contact:	John C. Harreld, Jr., President			
Office:	(601) 667-3667	Cell:	(601) 540-5731	Email: john@ajc-ms.com
Storm Water Outfalls:				
SW001⁽¹⁾	Latitude:	31° 52' 44.01" N	Longitude:	90° 17' 14.21" W
Closest Water Body and Route of Entry:	Unnamed tributary to Copiah Creek			
Is the receiving stream identified on the Section 303(d) List of Impaired Water Bodies?	No	Has a TMDL been completed for the receiving stream?	No	
Discharge to Municipal Separate Storm Sewer System (MS4)?	No	If yes, name MS4:	N/A	

⁽¹⁾ The asphalt plant is situated within the footprint of the Hammett Gravel Company gravel pit. The SWPPP maintained by the gravel pit indicates there is one outfall from the property. The outfall noted above is the outfall identified in Hammett's SWPPP.

2.3 SWPPP Objectives

The objective of the storm water program is to control water pollution associated with storm water discharges, and the goal of the storm water program is to improve water quality by reducing the amount of pollutants contained in storm water runoff from industrial sites. Industrial facilities subject to the requirements of a NPDES storm water discharge permit must prepare and implement a SWPPP. The objectives of the SWPPP are to:

- ☐ Identify potential sources of pollution and associated risk, which may affect the quality of storm water discharges;
- ☐ Describe best management practices (BMPs) and control measures intended to minimize pollutants in the facility's runoff; and
- ☐ Provide practical guidance for implementing the SWPPP and complying with the terms and conditions of the Hot Mix Asphalt General Permit.

2.4 SWPPP Elements

In order to meet the requirements of the HMAGP, the subsequent sections of the SWPPP contain the following elements:

- ☐ **Section 3.0: Facility Information** – Describes site characteristics, facility operations, site security, and site drainage.

- ❑ **Section 4.0: Storm Water Pollution Prevention Team** – Facility personnel identified as being responsible for implementing, maintaining, and revising the plan.
- ❑ **Section 5.0: Significant Exposed Materials and Control Measures** – Identifies and describes existing industrial activities and significant materials exposed to storm water, as well as specifies potential pollutants which may be present in storm water runoff. Best management practices, including both structural and non-structural controls, are also identified.
- ❑ **Section 6.0: BMP Schedules and Procedures** – Identifies schedules and procedures for implementing best management practices, including good housekeeping practices, preventive maintenance, spill prevention, and routine inspections for preventing and addressing potential materials and equipment exposed to storm water.
- ❑ **Section 7.0: Annual Facility Inspection and SWPPP Evaluation** – Procedures are outlined for conducting the Annual Facility Inspection and SWPPP Evaluation.
- ❑ **Section 8.0: SARA Title III, Section 313 Facility Requirements** – Identifies additional requirements associated with Section 313 water priority chemicals.
- ❑ **Figures:** Includes Site Location Map, Aerial Map, and Storm Water Flow Diagram with site boundaries, buildings, process and storage areas, storm water outfall locations, and flow directions.
- ❑ **Appendices:** Includes the Monthly Storm Water Inspection Form, Monthly Spill & Leak Log Sheet, Personnel Training Log, Annual SWPPP Evaluation Form, Non-Storm Water Discharge Evaluation, and the HMAGP.

3.0 FACILITY INFORMATION

3.1 Site Characteristics

The asphalt plant is located inside the footprint of the Hammett Gravel Company's gravel pit located off Highway 28 in Hazlehurst, Mississippi. The asphalt plant is located on approximately five (5) acres within the gravel pit's 165 acres. The facility operations fall primarily within SIC Code 2951, Asphalt Paving Mixtures and Blocks (NAICS Code 324121, Asphalt Paving Mixtures and Block Manufacturing). The Site Location Map, Figure 1, is a topographic map showing the area in which the site is located. An aerial site map is provided as Figure 2 – Aerial Map. The property boundary and storm water outfall for the entire site is identified on Figure 3 – Storm Water Flow Diagram. Figure 3 details the main production site showing the boundaries, buildings, storage areas, other exposed materials, storm water outfall locations, and storm water flow directions.

3.2 Process Description

The facility will utilize a portable drum mix plant for the manufacturing of hot mix asphalt. The process will begin by moving cold fine and coarse aggregates from the stockpile areas into feed bins. A conveyor belt will transport the aggregates from the feed bins to the screening process where material will be sized and separated based on the mix being produced. The material will then enter the drum where it will be mixed thoroughly and dried. Liquid asphalt will then be added to the drum to produce the final product which will be transported via conveyor belts to heated asphalt storage tanks. The plant will be equipped with a baghouse to minimize air emissions. The final product will be loaded into trucks from the storage bins for delivery. The plant will also use portable diesel-fired internal combustion engines to provide power to run the equipment at the plant. Use of these engines will also require the use of a 10,000-gallon diesel tank and a 500-gallon diesel tank which will be used to store enough fuel to operate the engines. In addition to the liquid asphalt tank (~30,000-gallon) associated with the asphalt plant, there will also be two (2) 10,000-gallon fuel oil tanks that will be used to store the fuel oil/on-spec used oil which will be burned in the dryer. There will also be a small portable office building used at the asphalt plant.

3.3 Site Security

There is a single entrance/exit access drive off Highway 28 that leads to the gravel pit. This limits access to the site. Equipment and the building will be locked and secured during periods when facility employees are not present. The facility is occupied during normal business hours by plant personnel. At least one employee will be available at the facility during all hours of operation, and at no time will AJC be open for business without an employee in attendance and directly supervising site activities. Visitors to the facility will be required to check in with the office.

3.4 Site Drainage and Storm Water Outfalls

The plant is located within a small area of the Hammett Gravel Company's gravel pit which has been mined for both sand and gravel. Storm water from the asphalt plant will consist of sheet flow from the asphalt plant towards Outfall SW001. The building, exposed areas and equipment, storm water flow directions, and storm water outfall locations are shown on Figure 3. The outfalls are further detailed below:

Outfall	Drainage Area	Drainage Type & Direction	Receiving Body
SW001	<p><i>Stockpiles.</i> Storm water that falls on and around the aggregate stockpiles.</p> <p><i>Asphalt Plant, Building, Generators, Storage Tanks, and Parking Area.</i> Storm water that falls on the processing area of the asphalt plant.</p>	<p>Sheet flow south away from the aggregate stockpiles towards Outfall SW001.</p> <p>Storm water falling on the processing plant will sheet flow towards Outfall SW001.</p>	Unnamed tributary to Copiah Creek.

3.5 Allowable Non-Storm Water Discharges

The HMAGP contains provisions for allowable non-storm water discharges. Allowable non-storm water discharges include fire-fighting activities, hydrant flushing, potable water sources, washing buildings without detergents, pavement wash waters where spills or leaks of toxic or hazardous materials have not occurred, incidental windblown mists from cooling towers, and air conditioning or compressor condensate (i.e., uncontaminated condensate). These types of discharges may occur from time to time but will be monitored during routine inspections.

ALLOWABLE NON-STORM WATER DISCHARGES		
Non-storm water discharges allowed by the Hot Mix Asphalt General Permit	Expected	
	Yes	No
Discharges from actual fire-fighting activities	<input type="checkbox"/>	<input checked="" type="checkbox"/>
Fire hydrant flushings	<input type="checkbox"/>	<input checked="" type="checkbox"/>
Water used to control dust	<input checked="" type="checkbox"/>	<input type="checkbox"/>
Potable water sources including uncontaminated water line flushing	<input type="checkbox"/>	<input checked="" type="checkbox"/>
Routine external building wash down that does not use detergents	<input type="checkbox"/>	<input checked="" type="checkbox"/>
Pavement wash waters where spills or leaks of toxic or hazardous materials have not occurred (unless all spilled material has been removed) and where detergents are not used	<input type="checkbox"/>	<input checked="" type="checkbox"/>
Uncontaminated air conditioning or compressor condensate	<input checked="" type="checkbox"/>	<input type="checkbox"/>
Incidental windblown mist from cooling towers that collects on rooftops or adjacent portions of the facility, but NOT intentional discharges from the cooling tower (e.g., "piped" cooling tower blowdown or drains)	<input type="checkbox"/>	<input checked="" type="checkbox"/>
Uncontaminated ground water or spring water	<input type="checkbox"/>	<input checked="" type="checkbox"/>
Foundation or footing drains where flows are not contaminated with process materials such as solvents	<input type="checkbox"/>	<input checked="" type="checkbox"/>

ALLOWABLE NON-STORM WATER DISCHARGES		
Non-storm water discharges allowed by the Hot Mix Asphalt General Permit	Expected	
	Yes	No
Uncontaminated excavation dewatering	<input type="checkbox"/>	<input checked="" type="checkbox"/>
Landscape irrigation	<input type="checkbox"/>	<input checked="" type="checkbox"/>
Water used to wash vehicles where detergents are not used	<input type="checkbox"/>	<input checked="" type="checkbox"/>

4.0 STORM WATER POLLUTION PREVENTION TEAM

The Storm Water Pollution Prevention (SWPP) Team is responsible for development, oversight, implementation, maintenance, and revisions to the SWPPP. The members of the team include the SWPP Team Leader and other representatives designated by the SWPP Team leader. Designated SWPP Team Members will be familiar with management and operations of the facility. The SWPP team members, title, and responsibilities are identified below:

Name	Title	Responsibilities
SWPP Team Leader		
John Harreld, Jr.	President	<ul style="list-style-type: none">❑ Coordinates SWPPP development and implementation.❑ Conducts inspections/sampling and maintains records.❑ Oversees “good housekeeping” efforts.❑ Monitors waste management and chemical storage.❑ Participates in the annual review to assess SWPPP effectiveness.❑ Ensures SWPPP revisions are completed as necessary.❑ Ensures annual SWPPP training is conducted.
TBD	Plant Manager	
SWPP Team Members		
John Harreld, Jr.	President	<ul style="list-style-type: none">❑ Signatory Responsibilities for the SWPPP.❑ Overall responsibility for the Storm Water Program.❑ Participates in the annual review to assess SWPPP effectiveness.

5.0 SIGNIFICANT EXPOSED MATERIALS AND CONTROL MEASURES

5.1 Materials Exposed and Best Management Practices

The following table details significant materials that are potentially exposed to storm water, the resulting potential pollutants, the Best Management Practices (BMPs) implemented, and the storm water discharge location. The BMPs below address those practices used to minimize contact of the exposed materials and pollutants with storm water.

ID No.	Exposed Material	Potential Pollutant(s)	BMPs Implemented ⁽¹⁾	Outfall(s)
1	Course and Fine Aggregate Stockpiles	Total suspended solids (TSS)	Runoff will be routed to areas south of the site prior to discharge.	SW001
2	Onsite Equipment including Wheel Loaders, Bulldozers, and Trackhoes	Oil, grease, anti-freeze, fuel, and TSS	Contaminants may be present due to incidental leaks, spills, or other causes. Entire site will be routinely inspected for releases from equipment that could potentially affect storm water. Any significant spills will be cleaned immediately with absorbent materials.	SW001
3	Asphalt Plant and Ancillary Equipment	Oil, grease, liquid asphalt, and TSS	Area will be routinely inspected for the presence of contaminants which could potentially affect storm water. Any material of concern will be cleaned to prevent storm water contamination.	SW001
4	Liquid Asphalt Tank (~30,000-gallons)	Asphalt	Contaminants may be present due to incidental leaks, spills, or other causes. Area will be routinely inspected for releases that could potentially affect storm water. Any significant spills will be cleaned immediately with absorbent materials.	SW001
5	Heat Transfer Fluid Tank	Heat Transfer Fluid	Contaminants may be present due to incidental leaks, spills, or other causes. Area will be routinely inspected for releases that could potentially affect storm water. Any significant spills will be cleaned immediately with absorbent materials.	SW001
6	Diesel and Fuel Oil Tanks, Drums of Heating Oil	Diesel Fuel, Fuel Oil, Heating Oil	Contaminants may be present due to incidental leaks, spills, or other causes. Area will be routinely inspected for releases that could potentially affect storm water. Any significant spills will be cleaned immediately with absorbent materials.	SW001
7	Vehicles in Employee and Visitor Parking	Anti-freeze, Fuel, Grease, Oil	Spills will be immediately cleaned to prevent possible exposure to storm water.	SW001

ID No.	Exposed Material	Potential Pollutant(s)	BMPs Implemented ⁽¹⁾	Outfall(s)
8	Diesel-fired Engines	Diesel, oil	Contaminants may be present due to incidental leaks, spills, or other causes. Area will be routinely inspected for releases that could potentially affect storm water. Any significant spills will be cleaned immediately with absorbent materials.	SW001

⁽¹⁾ All areas of exposed materials are inspected routinely per the requirements of the permit.

5.2 Structural and Nonstructural Controls

Existing structural and nonstructural storm water controls utilized to minimize effects on storm water runoff are listed below:

- ☐ Any drainage ditches and culverts are maintained to provide adequate storm water flow to prevent erosion or ponding on site;
- ☐ The site is excavated, graded, and contoured in a way to minimize erosion from storm water and direct storm water to the designated outfall;
- ☐ Impervious areas have been minimized to help reduce runoff and improve water quality of storm water leaving the site;
- ☐ Routine monthly site inspections per the requirements of the HMAGP, as well as the annual evaluations, are conducted to evaluate exposed materials and the effectiveness of the management practices;
- ☐ For containers, equipment, and transfer areas containing oil, the facility complies with the site-specific Spill Prevention Control and Countermeasure (SPCC) Plan, which includes monthly inspections and secondary containment requirements;
- ☐ Drums and containers of fluids are properly labeled and kept closed when not in use;
- ☐ Small containers of lubricants will be stored indoors, and spills will be contained and cleaned up promptly;
- ☐ Site vehicles and equipment are routinely inspected for any fluid leaks as part of the facility's preventive maintenance program;
- ☐ Leaks and spills will be cleaned up as soon as possible using dry methods such as absorbent materials (i.e., oil-dri, absorbent pads, etc.). Spill kits are kept in critical locations to provide quick response to spills;
- ☐ Employee training is provided at a minimum every calendar year to inform facility personnel about potential sources of contamination at the facility and best management practices for reducing or eliminating storm water pollution;
- ☐ Materials spilled during transfer and storage areas will be inspected and cleaned up as soon as

practical; and

- ❑ Routine facility housekeeping is performed to cleanup site areas and to remove debris and other miscellaneous trash from the facility. See Section 6.1 for additional housekeeping practices.

5.3 List of Significant Spills or Leaks

Significant spills or leaks are defined by federal regulations as a release within a 24-hour period of a hazardous substance or oil in an amount equal to, or in excess of, a reportable quantity listed in 40 CFR Part 117 and 40 CFR Part 302. Regardless of whether spills or leaks are considered significant, a log of all spills and leaks is maintained in the **Monthly Spill & Leak Log** found in **Appendix C**.

<i>SITE SPILL HISTORY</i>	YES	NO
Have any materials been spilled, leaked, or otherwise accidentally released in significant quantities to storm water drains or ditches in the past five (5) years? If "yes", provide a description of such spills below.	<input type="checkbox"/>	<input checked="" type="checkbox"/>
The facility anticipates operating in mid to late 2023; therefore, there is no history of any releases that may have occurred under AJC Ownership.		

5.4 Summary of Existing Storm Water Sampling Data

As of the date of this Plan, no storm water sampling has been conducted. However, jar test samples will be collected as required by the HMAGP.

6.0 BMP SCHEDULES AND PROCEDURES

Storm water management measures and controls, or best management practices (BMPs), are implemented to minimize the potential release of pollutants into storm water. BMPs have been established based on risk identification, assessment, and material inventory of potential pollutant sources at the site. The facility's BMPs are discussed in detail in Section 5.0. In this section, schedules and procedures for implementing the measures and controls are discussed further.

6.1 Good Housekeeping

Good housekeeping practices are intended to maintain areas in a clean and orderly manner. General housekeeping and cleaning activities are performed daily when the facility is operating. These practices generally involve limiting the exposure of potential pollution sources to storm water by removing or covering the source and by conducting daily cleanup. The following are part of the good housekeeping program:

- ❑ **Chemicals, Raw Materials, and Products**

All chemicals, raw materials, and products will be stored in a neat and orderly manner. Wastes will be collected and disposed of properly and any containment areas will be cleaned, and any accumulated precipitation removed promptly. Areas where condensation is discharged from air conditioners or air compressors will be routinely inspected for evidence of contamination.

- ❑ **Cleaning, Washing, and Degreasing**

No cleaning, washing, or degreasing by the use of chemicals or detergents of any type shall be performed in outside areas where the drainage could conceivably reach a storm water system.

- ❑ **Facility Unloading Areas**

Facility truck unloading and equipment parking areas will be routinely inspected and cleaned of any associated debris or incidental releases. Pans will be provided at the area to use at connection points during unloading. Waste will be disposed of regularly and transported to an approved landfill.

- ❑ **Outdoor Material Storage**

Course and fine aggregates and Recycled Asphalt Pavement (RAP) will be stockpiled onsite. Stockpiles will be routinely maintained and inspected to prevent any migration of stockpiled material from leaving the site.

Outdoor storage areas are routinely inspected to ensure that stored materials are in their designated areas and are free of accumulated sediment, debris, and any spills/leaks of fluid. Paved areas are also inspected to ensure surfaces are free of accumulated dust, sediment, and debris.

- ❑ **Waste Receptacles**

Waste receptacles for general trash are maintained closed when not in use or are positioned in covered areas where accidental spills or precipitation cannot result in potential storm water contamination. Receptacles are routinely emptied to prevent overfilling, with waste disposed at a permitted municipal solid waste facility.

- ❑ **Drainage System Maintenance**

Drainage ditches, storm water controls, and outfalls will be routinely inspected for visible sheen or other signs of contamination.

❑ **Storage Containment Areas**

Storage containment areas will be routinely inspected for signs of contamination.

❑ **Erosion Control**

The site will be routinely inspected for signs of erosion, and eroding areas will be stabilized by necessary means.

6.2 Preventive Maintenance

Preventive maintenance inspections are performed in conjunction with the Monthly Inspection/Visual Evaluation Report. The facility will perform routine inspection of tanks, operations areas, stockpile areas and will perform preventive maintenance of ancillary equipment (e.g., wheel loaders, bulldozers, trackhoes, etc.) that could fail or leak. Facility vehicles and loaders will be kept in good repair with all fluid reservoirs and fluid filled lines inspected for cracks and leaks on a routine basis. Spill cleanup materials such as absorbents (e.g., sand), brooms, and shovels will be maintained onsite to respond immediately to any spill that may occur at the facility. In addition, facility grounds will be routinely inspected for solid waste disposal, erosion, and other signs of potential storm water contamination.

6.3 Spill Prevention and Response

Potential pollution sources are inspected on a regular basis. Containers are plainly labeled to aid in proper handling and response and secondary containment is used when feasible. Containers of oil-based products and oil-filled equipment exceeding 55-gallons or more are addressed in the facility's **Spill Prevention, Control, and Countermeasure (SPCC) Plan**. Based on current facility processes and the types and quantities of chemicals stored, there is not the potential for a significant spill or release; however, if a release occurs, corrective actions will be taken immediately to contain and cleanup the release. Safety Data Sheets (SDS) will be used as the guide for appropriate personal protective equipment (PPE) and spill response. Spill response equipment is maintained onsite and includes items such as absorbents, brooms, and/or shovels to cleanup small spills or releases that may occur at the site. Released material, contaminated soils, debris, or other material will be promptly removed and disposed of in accordance with Federal, State, and Local requirements. All affected employees will be informed of their responsibilities for responding to releases. At a minimum, based on requirements of the HMAGP, the following steps must be completed:

1. The facility will notify the National Response Center at (800) 424-8802, the Mississippi Emergency Management Agency at (601) 933-6362 or (800) 222-6362, MDEQ at (601) 961-5171, and local responders as soon as facility personnel first become aware of a significant release. MDEQ must be notified by phone within 24 hours of discovery of the discharge.
2. A written submission, including a description of the event; the cause; the date and time; the duration of the event; whether or not the problem has been corrected and the steps taken or planned to reduce, eliminate and prevent recurrence, will be submitted to the MDEQ within five (5) working days of the time the facility first became aware of the circumstances.
3. This SWPPP will be amended within 30 calendar days of knowledge of the release if existing BMPs are deemed ineffective in controlling the release of pollutants. The amendment will include a description of the incident, as well as, new BMPs to minimize the potential of the incident recurring,

if possible. In addition, the SWPPP will be amended within 30 days whenever there is a change in construction, operation, or maintenance that may result in storm water contamination.

If a significant release does occur or site changes affect the SWPPP, the SWPP Team Leader or his/her designee is responsible for ensuring that these requirements are satisfied. Any spills are recorded on the **Monthly Spill & Leak Log Sheet in Appendix B**. If no spills have occurred during the month, the **Monthly Spill & Leak Log Sheet in Appendix B** shall be completed by checking the available box and signing it as indicated.

6.4 Routine Visual Inspections

Routine visual site inspections will be conducted to ensure that storm water discharges are free from objectionable characteristics in observable amounts (i.e., turbidity, color, sheen, etc.). All areas, including stockpiles, plant operating areas, parking areas, exposed product/material storage areas and drainage structures, contributing to storm water discharges associated with exposed industrial activity will be inspected. These areas will be checked by a member of the SWPP Team for evidence of pollutants entering the site drainage system and for identifying conditions which may cause contamination of storm water runoff. All drainage structures and areas containing exposed materials as specified in Section 5.1 will be included in the routine visual inspections.

Routine visual site inspections will be performed as often as needed but no less than once monthly (See inspection form in Appendix A). If and when feasible, the inspections will be conducted during or after storm events. As part of any inspection conducted during or after a storm event, storm water will be collected in a clean, clear jar and examined (see **Monthly Storm Water Inspection Form in Appendix A**) in a well-lit area for the purpose of identifying obvious industrial storm water pollution such as color, lack of clarity, floating solids, settled solids, suspended solids, foam, odor, and oil sheens. Should any objectionable characteristics described above be observed, an investigation upstream from the sample location will be conducted to identify the potential sources of pollution and corrective actions will be implemented as needed.

A record of all routine visual site inspections will be maintained onsite with the SWPPP and will contain the following information:

- ☐ Date of inspection;
- ☐ Name and signature of inspector;
- ☐ Observations of exposed industrial activities, equipment, and storage areas;
- ☐ Observations of facility drainage, storm water controls, and outfalls;
- ☐ Observations of jar test results, and observations of upstream investigations, if required;
- ☐ Description of concerns or problem conditions observed; and
- ☐ Description of corrective actions needed, personnel responsible for implementing corrective action, anticipated time frame for implementing corrective actions, and date corrective actions were implemented.

A record of all jar test observations will be maintained onsite with the SWPPP and will contain the following information:

- ❑ Date and time of inspection;
- ❑ Name and signature of inspector;
- ❑ Observations of jar test results, and observations of upstream investigations, if required;
- ❑ Description of concerns or problem conditions observed; and
- ❑ Description of corrective actions needed, personnel responsible for implementing corrective action, anticipated time frame for implementing corrective actions, and date corrective actions were implemented.

The results of all inspections and associated corrective actions will be included with the **Annual SWPPP Evaluation Form** provided in **Appendix D** and kept with the SWPPP.

6.5 Employee Training

Effective management of storm water pollution will require site personnel responsible for implementing and/or complying with the SWPPP to be familiar with conditions that may cause pollution. Furthermore, day-to-day use of BMPs by employees is essential for the success of the SWPPP. The designated SWPP Team Leader will be responsible for ensuring the implementation of the guidelines established in the HMAGP and the SWPPP and for employee training that is to include the following elements:

- ❑ Permit conditions and limitations for each applicable activity (i.e., air emissions, industrial storm water, construction storm water);
- ❑ Operation, maintenance, and inspection of air emission control equipment;
- ❑ Housekeeping and pollution prevention requirements;
- ❑ Spill prevention and response procedures;
- ❑ Identification and elimination of non-allowable, non-storm water discharge;
- ❑ Installation, maintenance and inspection of erosion and sediment controls for any construction activities;
- ❑ Installation, maintenance, and inspection BMPs;
- ❑ Procedures for conducting monthly inspections, jar tests, and any required monitoring;
- ❑ Recordkeeping, reporting, and record retention requirements;
- ❑ Release reporting and non-compliance notification and reporting requirements; and
- ❑ Standard requirements of the HMAGP.

Training is required to be conducted at least annually, and training documentation is provided in the Personnel Training Log Form in Appendix C. Newly hired employees will be trained in the responsibilities of storm water management prior to performing such duties, and annually thereafter, by December 31st of each calendar year. Regular feedback regarding the implementation and maintenance of the SWPPP is encouraged from all site personnel. The SWPP team members will evaluate the

effectiveness of the training program annually and make improvements as necessary to promote employee awareness.

6.6 Non-Storm Water Discharge Certification

The HMAGP prohibits virtually all non-storm water discharges unless specifically allowed by the general permit (see Section 3.5) or by a NPDES direct discharge wastewater permit. As required by the HMAGP, the site must certify at least every five (5) years that storm water discharges have been evaluated for the presence of non-allowable, non-storm water discharges. The certification shall include method(s) of evaluation, date(s), observation point(s) and result(s). The evaluation method(s) may include, but not be limited to, one or more of the following dry weather screening methods: 1) visual inspection, 2) plant schematic review, and 3) dye testing. A **Non-Storm Water Discharge Evaluation Form** addressing the dry weather observation of industrial activities, storm water drainage, and the outfall (SW001) is provided in **Appendix E**. The observation revealed no non-storm water discharges from the facility. Additionally, non-storm water discharges will be monitored during the routine inspections.

6.7 Sediment and Erosion Controls

Vegetated areas (primarily seasonal grasses) at the site are maintained to prevent erosion and minimize the loss of sediment due to storm water runoff. Materials, equipment, and activities will be located so that potential leaks and spills are contained or able to be contained or diverted before discharge. The SWPP team regularly inspects drainage ditches, swales, and basins for erosion and will stabilize questionable areas as needed. Sediment and erosion controls shall be maintained, as necessary.

6.8 Storm Water Discharge Limitations

Non-numeric limitations of the permit require storm water discharges to be free from the following:

- ☐ Debris, oil scum, and other floating materials other than trace amounts;
- ☐ Eroded soils and other materials that will settle to form objectionable deposits in receiving waters;
- ☐ Suspended solids, turbidity, and color at levels inconsistent with receiving waters; and
- ☐ Chemicals in concentrations that would cause a violation of State Water Quality Criteria in receiving waters.

Numeric Limitations are not specified in the HMAGP. Also, there are no specific Federal effluent limitations guidelines applicable to storm water discharges at the site.

6.9 Storm Water Treatment

Storm water from the facility is not treated prior to discharge.

7.0 ANNUAL FACILITY INSPECTION AND SWPPP EVALUATION

7.1 Annual SWPPP Evaluation

The Annual SWPPP Evaluation will be conducted by December 31st of each year and will assess the effectiveness and accuracy of the SWPPP and ensure that the SWPPP is current, up to date, and meets the requirements of the HMAGP. The results of the monthly inspections and sampling will be documented each month and used to complete the **Annual SWPPP Evaluation Form** found in **Appendix D**.

7.2 SWPPP Update

The SWPPP will be updated to include potential sources of storm water contamination identified during the inspections and not already included in the plan, as well as any additional BMPs or control measures needed to control new or existing sources of storm water contamination. The amended plan will be submitted to MDEQ within thirty (30) days of amendment of the plan. The SWPPP will also be updated if the facility is notified by the Executive Director of MDEQ that the SWPPP does not meet minimum requirements. The update will be submitted within thirty (30) days of the notification by MDEQ, along with a certification that the requested changes have been made.

7.3 Noncompliance Reporting

In the event of anticipated, or unanticipated, non-compliance with the HMAGP, the following procedures will be followed:

- (1) **Unanticipated Noncompliance** – The coverage recipient will notify MDEQ orally within twenty-four (24) hours from the time that he, or she, becomes aware of unanticipated noncompliance followed by a written notice to the MDEQ within five (5) working days. The written report must describe the cause; exact dates and times; steps taken or planned to reduce, eliminate, or prevent reoccurrence of the noncompliance and if noncompliance has not ceased, the anticipated time for correction.
- (2) **Anticipated Noncompliance** – The coverage recipient will give at least ten (10) days advance notice to MDEQ, if possible, before any planned noncompliance with the permit.
- (3) **Other Noncompliance** – The coverage recipient shall report all instances of noncompliance not reported under paragraph (1) above, within 30 days from the end of the month in which the noncompliance occurs. The report shall describe the cause, the exact dates and times, steps taken or planned to reduce, eliminate, or prevent reoccurrence and, if the noncompliance has not ceased, the anticipated time for correction.

Reports must be submitted to MDEQ to the attention of: Chief, Environmental Compliance and Enforcement Division.

7.4 Retention of Records

All records, reports and information resulting from activities required by this permit will be retained by the coverage recipient, onsite, for a period of three (3) years from the date of generation. Copies of completed Annual SWPPP Evaluation Forms, as well as the monthly inspections and sampling, will be kept with the SWPPP.

8.0 SARA TITLE III, SECTION 313 FACILITY REQUIREMENTS

8.1 Section 313 Water Priority Chemicals

The SARA Section 313 Water Priority Chemicals (WPC) stored at the site include the following:

313 Chemical	Product Type	Storage Container	Area stored	Quantity
Naphthalene (Diesel fuel)	Liquid	Storage Tanks (2)	Near processing plant	10,000 gal each

Small quantities of other WPC may be contained in various materials located throughout the facility (i.e., maintenance shop chemicals, aerosol paints, etc.), but are less than the amount that triggers Toxics Release Inventory (TRI), Form R reporting. The Safety Data Sheets (SDS) of all materials are maintained onsite.

8.2 Section 313 WPC Storage, Processing, and Handling

No non-liquid WPC will be stored, processed, or handled onsite. In areas where liquid WPC will be stored, processed, or handled, appropriate containment procedures and drainage control structures will be implemented and maintained to contain a potential spill or release. All WPC storage containers, piping, and process and handling equipment are compatible with the material stored and conditions of storage (e.g., pressure, temperature) and are operated to prevent discharges of WPC. The diesel fuel tanks will be located inside of an earthen containment structure. Spills will be immediately contained and cleaned within the containment structure. Spill cleanup equipment will be available to prevent spills from leaving the site. Loading and unloading areas will be operated to minimize discharges of liquid WPC. Other controls may include the use and proper maintenance of drip pans where spillage may occur, such as when making or breaking hose connections, and/or strong spill contingency and integrity testing plan.

Visual inspections of the storage areas, as well as storage containers are performed to identify potential integrity problems. Signs of leakage or deterioration will be documented, and corrective action will be initiated if such signs are noted. No adverse impact to the environment from storm water contact is anticipated from the presence of WPC chemicals in the products used at the site.

8.3 Preventive Maintenance and Housekeeping

All areas containing WPC chemicals will be inspected for leaks or conditions that could lead to discharges or result in direct contact of storm water. Facility personnel will monitor such potential occurrences during normal operations and during routine visual inspections (see Section 6.4). In particular, facility piping, pumps, storage tanks and bins, pressure vessels, process and material handling equipment, and material bulk storage area shall be examined for any conditions or failures which could cause a discharge.

Inspection shall include examination for leaks, corrosion, support or foundation failure, or other forms of deterioration or non-containment.

8.4 Facility Security

A security system has been established and implemented that prevents accidental or intentional entry, which could cause a discharge. These security measures are detailed in Section 3.3.

8.5 Training

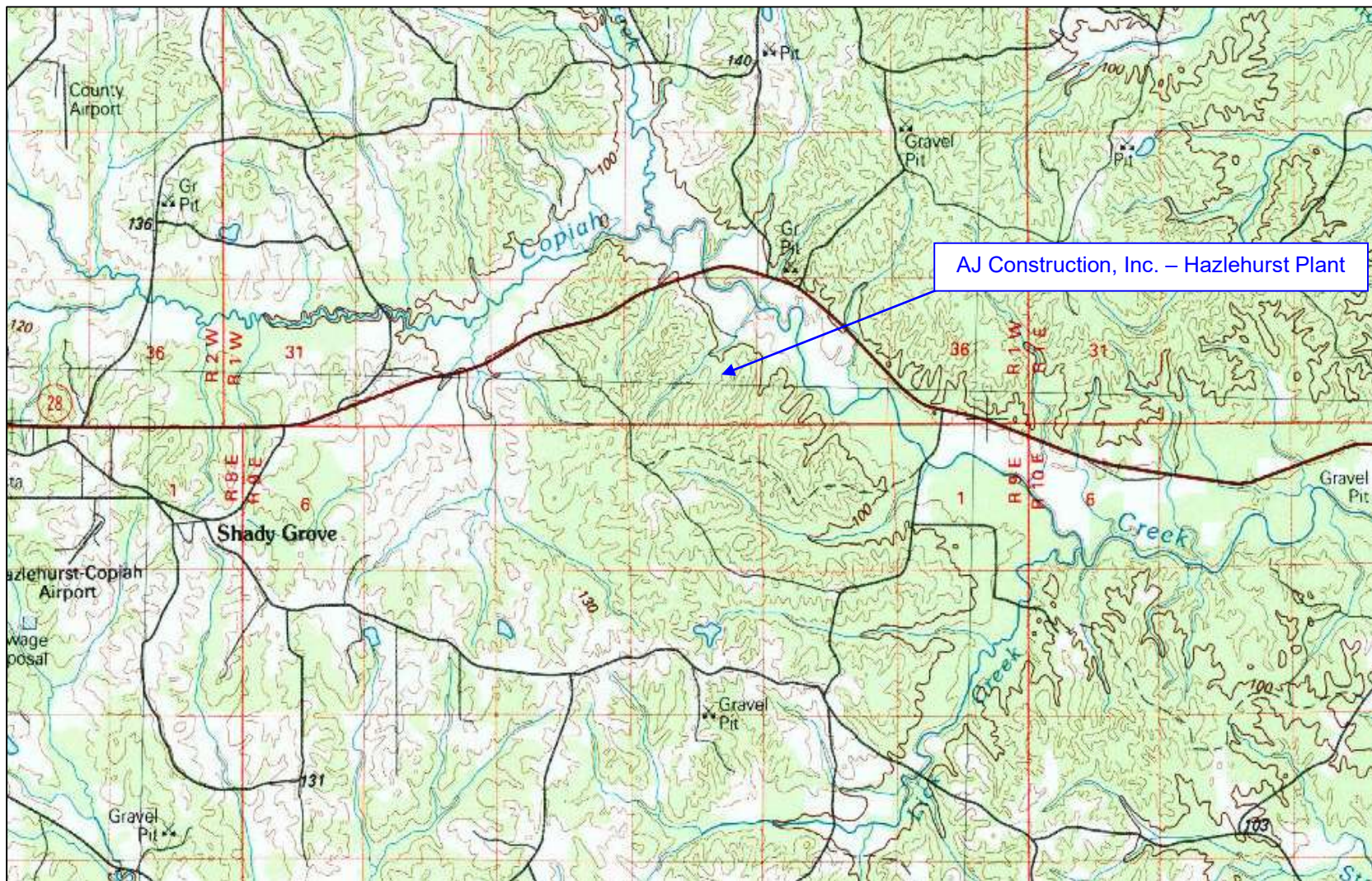
Employee training regarding the prevention of and response to spills and discharges of WPC will be conducted **at least annually** (see Section 6.5).

8.6 Storm Water Monitoring

During coverage under the HMAGP, which is included in **Appendix F**, storm water discharges associated with industrial activity will be monitored through routine inspections detailed in Section 6.4. No materials are known to have been spilled, leaked, or otherwise released to storm water drainage outfalls. At this time, storm water sampling is not required by the HMAGP. Therefore, to date, storm water sampling has not been conducted. If storm water sampling does occur or is required, results will be reported to MDEQ and maintained on site.

FIGURES

FIGURE 1
SITE LOCATION MAP



Source:
TopoView

Legend:
N/A

Drawn By/Checked By: BJH/JR

Date: 04/03/2023

AJ Construction, Inc. – Hazlehurst Plant
Highway 28
Hazlehurst, Mississippi

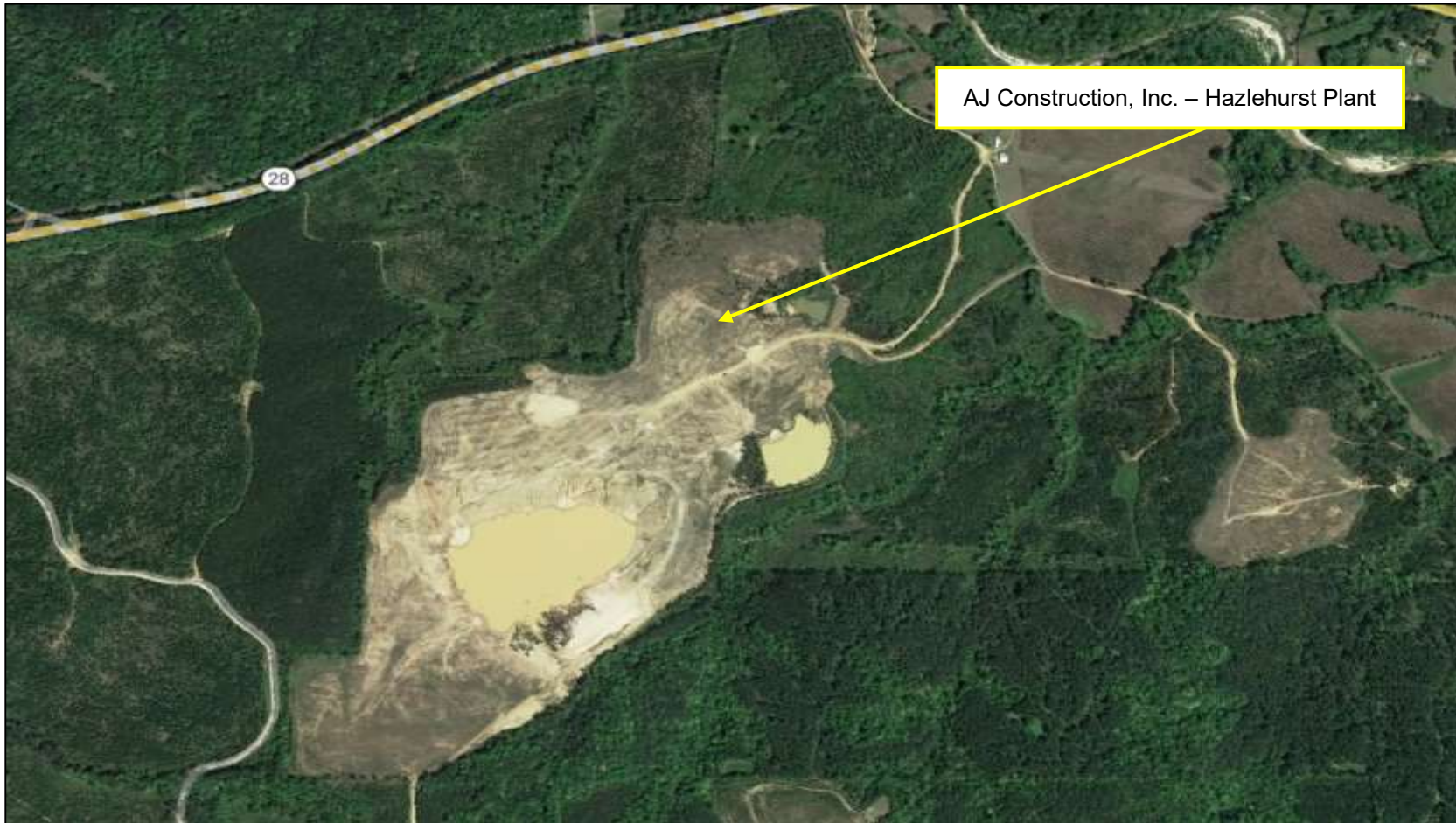
Figure 1: Site Location Map



Environmental Compliance
& Safety, Inc.
PO Box 356
Sherman, MS 38869

FIGURE 2

AERIAL MAP



Source:
Google Earth

Legend:
N/A

Drawn By/Checked By: BJH/JR

Date: 04/03/2023

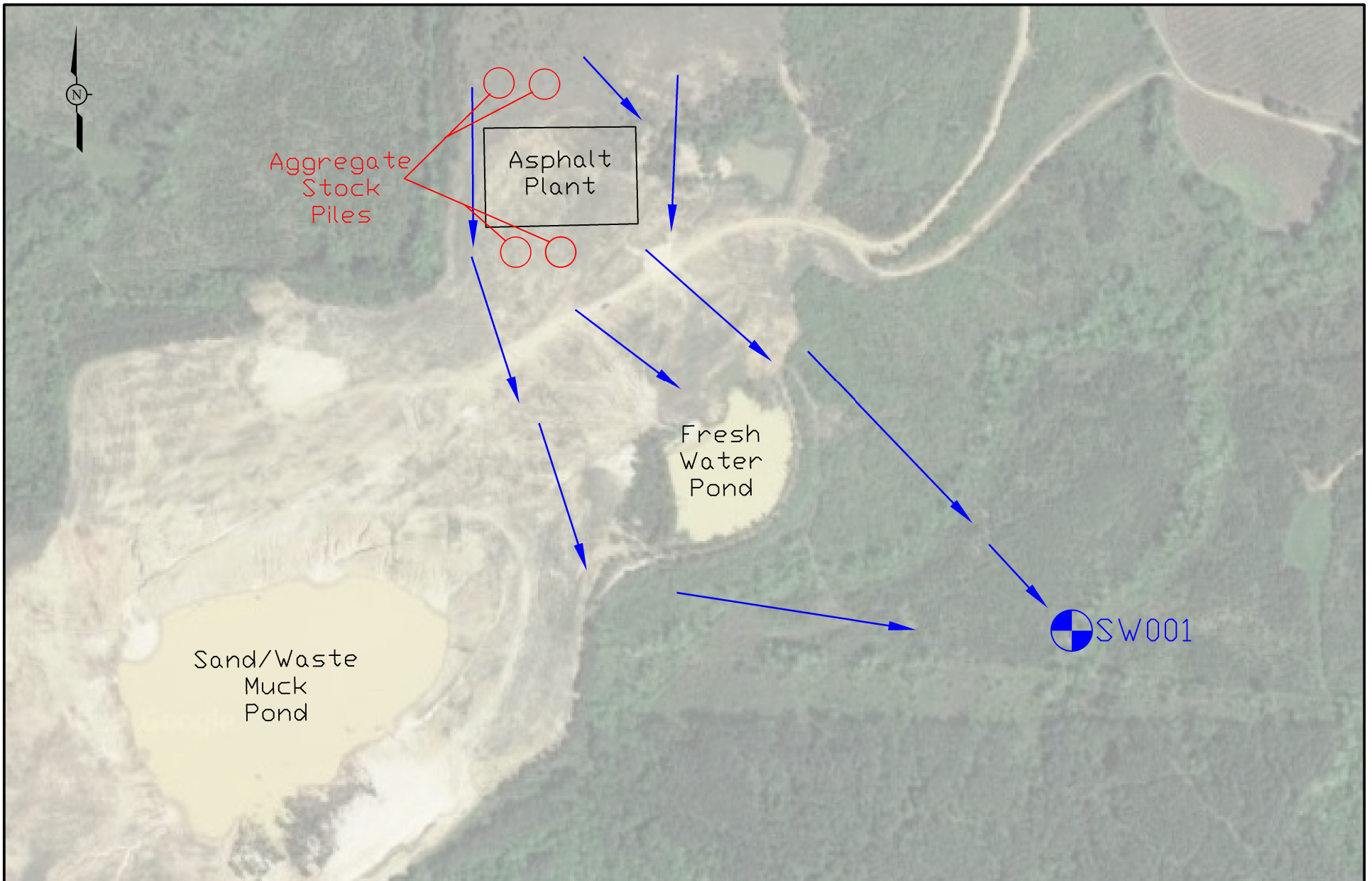
AJ Construction, Inc. – Hazlehurst Plant
Highway 28
Hazlehurst, MS

Figure 2: Aerial Map



Environmental
Compliance & Safety, Inc.
PO Box 356
Sherman, MS 38869

FIGURE 3
STORM WATER FLOW DIAGRAM



P.O. Box 356
 Sherman, MS 38869
 (662) 840-5945

AJ Constrution, Inc. - Hazlehurst Plant
 Highway 28
 Hazlehurst, MS

Site Diagram

Figure 3

Project No.:

Legend:

Outfall 

Scale: NTS

Drawn By: JAD

Date: 3/15/2023

APPENDICES

APPENDIX A

MONTHLY STORM WATER INSPECTION FORM



MONTHLY STORM WATER INSPECTION FORM

HOT MIX ASPHALT GENERAL PERMIT (HMAGP)

Facility Name: AJ Construction, Inc. - Hazlehurst Plant **Coverage Number:** MSR70 **Date:** _____

Instructions: Conduct a monthly inspection of all industrial activities exposed to storm water and the storm water outfalls. Inspect each area/equipment noted below for indications of potential storm water contamination or failure of best management practices required by the SWPPP, recording any issues and corrective action taken. Such inspection should be conducted during or immediately following a rain event producing runoff, if possible. Also, for any monthly inspection performed during or after a rain event, collect storm water runoff from each outfall in a clean, clear jar and examine it in a well-lit area. Should any objectionable characteristics described below be observed, the coverage recipient shall investigate upstream from the sample location to identify the potential sources of pollution and implement corrective action(s). [2022 HMAGP ACT4, T-6]

Was the inspection conducted during or following a rain event resulting in runoff?	<input type="checkbox"/> Yes <input type="checkbox"/> No	If yes, were samples collected for visual examination?	<input type="checkbox"/> Yes <input type="checkbox"/> No <input type="checkbox"/> N/A
---	--	---	---

Areas/Equipment Inspected	Issues Noted?			Describe any issues noted and corrective action taken.
	Yes	No	N/A	
Equipment Fueling/Maintenance Areas				
Tanks, Silos, Hoppers and Dust Collection				
Truck Loading Area				
Outdoor Storage Piles				
Spill Kits Available and Stocked				
General Site-Wide Housekeeping				
Other:				

JAR TEST (continue on next page for more than one outfall)

Outfall Number / Location of Sample:		Time:	
--------------------------------------	--	-------	--

Parameter	Parameter Description	Yes	No	If yes, provide a description and any corrective action taken.
Color	Is the water sample colored?			
Clarity	Is the water sample <u>NOT</u> clear and transparent?			
Floating Solids	Are there solids floating at the top of the sample?			
Settled Solids	Are there solids settled out in the bottom of the sample?			
Suspended Solids	Are there solids suspended in the water column of the sample?			
Foam	Is there foam forming at the top of the sample?			
Odor	Does the sample have an odor?			
Oil Sheen	Does the sample have an oil sheen?			

"I certify under penalty of law that this report is true, accurate, and complete to the best of my knowledge and belief."

Inspector Name (printed)	Inspector's Signature	Date
---------------------------------	------------------------------	-------------

APPENDIX B

MONTHLY SPILL & LEAK LOG SHEET



MONTHLY SPILL & LEAK LOG

HOT MIX ASPHALT GENERAL PERMIT (HMAGP)



Facility Name: AJ Construction, Inc. - Hazlehurst Plant

Month: _____

Coverage Number: MSR70 _ _ _ _

Year: 2023

Instructions: A list of spills and leaks of toxic or hazardous pollutants that have occurred at the facility shall be documented on the Monthly Spill and Leak Log Sheet provided by MDEQ at www.mdeq.ms.gov/hmagp. A separate form shall be completed for each month that the facility is covered under this general permit. If no spills have occurred, the form shall be completed by checking the first box and signing at the bottom, as indicated. Coverage recipients may use an alternate form to record this information, as long as it includes all of the information in this form and is updated monthly. The completed monthly forms shall be filed on-site with the SWPPP and made available to MDEQ personnel for inspection upon request. [2022 HMAGP ACT4 T-2(4)]

☐ No spills have occurred this month.

Date of Spill	Material Spilled	Quantity Spilled (specify units)	Area of Spill	Did spill result in a discharge? (Yes/No)	Injury / Property Damage? (Yes/No)	Person(s) involved in cleanup	Date reported to MDEQ (if significant)

Corrective Actions(s) Taken: _____

Date of Spill	Material Spilled	Quantity Spilled (specify units)	Area of Spill	Did spill result in a discharge? (Yes/No)	Injury / Property Damage? (Yes/No)	Person(s) involved in cleanup	Date reported to MDEQ (if significant)

Corrective Actions(s) Taken: _____

Date of Spill	Material Spilled	Quantity Spilled (specify units)	Area of Spill	Did spill result in a discharge? (Yes/No)	Injury / Property Damage? (Yes/No)	Person(s) involved in cleanup	Date reported to MDEQ (if significant)

Corrective Actions(s) Taken: _____

"I certify under penalty of law that this report is true, accurate, and complete, to the best of my knowledge and belief."

Inspector Name: _____ Inspector Signature: _____ Date: _____

If requested, submit signed form to 401/Storm Water Branch Manager, ECED, MDEQ, PO Box 2261, Jackson, MS 39225

Last Revised: 9/12/2022

APPENDIX C
PERSONNEL TRAINING LOG



PERSONNEL TRAINING FORM

HOT MIX ASPHALT GENERAL PERMIT



Facility Name: AJ Construction, Inc. - Hazlehurst Plant

Coverage Number: MSR70 _ _ _ _

Instructions: Personnel responsible for implementing and/or complying with the requirements of the HMAGP shall receive initial and periodic refresher training. Training shall be provided within twelve (12) months of issuance or reissuance of HMAGP coverage and prior to performing responsibilities under the coverage. Refresher training shall be provided annually. The trainee(s) and trainer shall sign and date this form. The completed form shall be filed on-site with the SWPPP and made available to MDEQ personnel for inspection upon request. [2022 HMAGP ACT5, T-15]

Describe the contents of the training or attach the training to this form and indicate "Attached."

Trainer Name (printed)	Trainer Signature	Date
Trainee Name (printed)	Trainee Signature	Date

APPENDIX D

ANNUAL SWPPP EVALUATION FORM



Annual SWPPP Evaluation Form for Calendar Year 2023

HOT MIX ASPHALT GENERAL PERMIT (HMAGP)

COVERAGE NUMBER MSR70



Instructions: The SWPPP must be evaluated annually, by December 31st, to ensure the effectiveness of the best management practices (BMPs) specified in the SWPPP. The annual evaluation shall be filed on-site with the SWPPP and made available to MDEQ personnel for inspection upon request. [2022 HMAGP ACT4, T-7]

Company/Facility Name: AJ Construction, Inc. - Hazlehurst Plant Person evaluating SWPPP:

SWPPP Components and Description of Potential Pollutant Sources [ACT 4, Condition T-2]

YES	NO	
		Identifies industrial activities exposed to storm water. [T-2(1)]
		Describes materials and pollutants associated with the activities above. [T-2(2) & (3)]
		Identifies spill and leaks of toxic or hazardous pollutants. [T-2(4)]
		Identifies pollutants of concern and summarizes storm water sampling data. [T-2(5)]
		Includes a detailed scaled site map and a topographical map. [T-2(6) & (7)]
		Identifies pollutants likely present and a reasonable potential for containment. [T-2(8)]

SWPPP Components and Description of Storm Water Management Controls [ACT 4, Condition T-3]

		Identifies position(s) responsible for developing, implementing, maintain, and revising SWPPP. [T-3(1)]
		Lists materials handled, assesses and identifies risk of potential pollution, and specifies necessary controls. [T-3(2)]
		Identifies areas with a high potential for soil erosion and prevention measures. [T-3(3)]
		Identifies a preventive maintenance program. [T-3(4)]
		Identifies good housekeeping practices. [T-3(5)]
		Identifies potential spill areas, their drainage points, and procedures for cleaning spills. [T-3(6)]
		Identifies personnel training responsible for implementing and/or complying with the SWPPP. [T-3(7)]
		Certifies storm water testing every 5 years, when feasible, for non-allowed, non-storm water discharges. [T-3(8)]
		Identifies areas to be inspected monthly for objectionable characteristics. [T-3(9)]
		Identifies allowable non-storm water discharges and appropriate BMPs for the non-storm water. [T-3(10)]
		Provides management of storm water volume through its diversion, infiltration, storage, or re-use. [T-3(11)]

SWPPP Certification and Signature

☐☐

The SWPPP is on-site, current, adequately addresses the sources of pollution at the facility, is fully compliant with the terms and conditions of the HMAGP and effectively controls storm water pollutants. If no, the SWPPP shall be amended and submitted to MDEQ within 30 days of amendment. [Condition T-4(4), ACT4]

I certify under penalty of law that this document was prepared under my direction or supervision in accordance with a system designed to assure that qualified personnel properly gathered and evaluated the information submitted. Based on my inquiry of the person or persons who manage the system, or those persons directly responsible for gathering the information, the information submitted is, to the best of my knowledge and belief, true, accurate and complete. I am aware that there are significant penalties for submitting false information, including the possibility of fines and imprisonment for knowing violations.

Authorized Signature of Responsible Official*

Date

John C. Harreld, Jr.

President

Printed Name

Title

* A responsible official must meet the requirements of 2022 HMAGP, ACT 5, Condition T-5

APPENDIX E

NON-STORM WATER DISCHARGE EVALUATION

NON-STORM WATER DISCHARGE EVALUATION FORM

Outfall No.	Date of Evaluation	Method Used to Test or Evaluate Discharge	If Evaluation is Impossible Give Reason	Is Non-Storm Water Being Discharged? ¹ (Yes/No)	List Likely Sources of Non-Storm Water Discharges	Person(s) Who Conducted the Test or Evaluation
SW001	01/17/2023	Visual Inspection	N/A	No	N/A	BJ Hailey (ECS)

I certify under penalty of law that this document was prepared under my direction or supervision in accordance with a system designed to assure that qualified personnel properly gathered and evaluated the information submitted. Based on my inquiry of the person or persons who manage the system, or those persons directly responsible for gathering the information, the information submitted is, to the best of my knowledge and belief, true, accurate and complete. I am aware that there are significant penalties for submitting false information, including the possibility of fine and imprisonment for knowing violations.

A. Name & Official Title (type or print)

John C. Harreld, Jr., President

B. Area Code and Telephone No.

(601) 667-3667

C. Signature



D. Date Signed

4-4-23

¹ Allowable non-storm water discharges addressed in an individual NPDES permit are not included in this evaluation.

APPENDIX F

HOT MIX ASPHALT GENERAL PERMIT



**State of Mississippi
Mississippi Department of Environmental Quality (MDEQ)**



HOT MIX ASPHALT GENERAL PERMIT (HMAGP)

THIS CERTIFIES

Facilities issued a certificate of permit coverage under this permit are granted permission to:

- Construct/Operate air emissions equipment to comply with the emission limitations, monitoring requirements, and other conditions set forth herein and
- Discharge storm water associated with industrial activities into state waters in accordance with the National Pollutant Discharge Elimination System (NPDES) and the effluent limitations, inspection requirements and other conditions set forth in herein.

This permit is issued in accordance with the provisions of the Mississippi Air and Water Pollution Control Law (Section 49-17-1 et seq., Mississippi Code of 1972), and the regulations and standards adopted and promulgated thereunder, and under authority granted pursuant to Section 402(b) of the Federal Water Pollution Control Act.

Mississippi Environmental Quality Permit Board

A handwritten signature in blue ink that reads "Krystal Rudolph".

Authorized Signature

Mississippi Department of Environmental Quality

Issued: October 24, 2022

Expires: September 30, 2027

Permit No. MSR70

Agency Interest # 38087

Hot Mix Asphalt General Permit

Contents

ACT1 (HMAGP - General) Permit Applicability and Authorization:	1
ACT2 (HMAGP - General) Obtaining Coverage, Recoverage, and Requesting Termination:.....	5
ACT3 (HMAGP - General) Air Emissions Requirements:	10
ACT4 (HMAGP - General) Industrial Storm Water Requirements:	22
ACT5 (HMAGP - General) Standard Requirements Applicable to All ACTs:.....	29
ACT 6 (HMAGP - General) Definitions:	39
APPENDIX: List of Existing Hot Mix Asphalt Facilities in Mississippi.....	44

ACT1 (HMAGP - General) Permit Applicability and Authorization:**T-1 PERMIT AREA:**

The HMAGP covers all areas of the State of Mississippi. [11 Miss. Admin. Code Pt. 2, Ch. 2. ; 11 Miss. Admin. Code Pt. 6, Ch. 1.]

T-2 ELIGIBILITY AND AUTHORIZATION:

- (1) This permit covers all new and existing hot mix asphalt facilities in the State of Mississippi which fall under Standard Industrial Classification (SIC) Code 2951 – Asphalt Paving Mixtures and Blocks.
- (2) This permit authorizes coverage recipients to construct and operate air emissions equipment and to discharge storm water in accordance with limitations, monitoring requirements, and other conditions set forth in this permit for the following emissions and/or discharges:
 - (a) Air emissions associated with the construction and operation of significant minor and synthetic minor hot mix asphalt facilities that are equipped with a baghouse (or other devices approved by MDEQ) for control of air emissions from the dryer/mixer.
 - (b) Air emissions from rock crushers and/or recycled asphalt pavement (RAP) crushers co-located with the hot mix asphalt facilities.
 - (c) Storm water associated with industrial activity (i.e., facility operation).
- (3) A facility is eligible for coverage under this general permit for discharges of pollutants of concern to water bodies for which there is an EPA-approved Total Maximum Daily Load (TMDL) if measures and controls are incorporated that are consistent with the assumptions and requirements of such TMDL. To be eligible for coverage under this general permit, the facility must incorporate in the Storm Water Pollution Prevention Plan (SWPPP) and/or effluent limitation any conditions applicable to any discharge(s) necessary for consistency with the assumptions and requirements of such TMDL. If a specific wasteload allocation is established that would apply to the facility's discharge subsequent to coverage issuance, the facility must implement steps necessary to meet that allocation.
- (4) A facility is eligible for coverage under this general permit for discharges of pollutants of concern to impaired water bodies on MDEQ's 303(d) list, provided best management practices (BMPs) are employed that prohibit further impairment of the designated and/or existing beneficial uses in the receiving water body. No discharge will be allowed if the pollutant that is proposed to be discharged will cause or contribute to an existing impairment of a Section 303(d) listed water.

ACT1 (HMAGP - General) Permit Applicability and Authorization (continued):

- (5) Allowable non-storm water discharges (listed below) provided they do not cause or contribute to a violation of water quality standards.
- (a) Discharges from actual fire-fighting activities
 - (b) Fire hydrant flushings
 - (c) Water used to control dust
 - (d) Potable water sources including uncontaminated water line flushings
 - (e) Routine external building wash down that does not use detergents
 - (f) Pavement wash waters where spills or leaks of toxic or hazardous materials have not occurred (unless all spilled material has been removed) and where surface waters are not impacted by pollutants associated with industrial activities and hazardous cleaning products
 - (g) Uncontaminated air conditioning or compressor condensate
 - (h) Uncontaminated ground water or spring water
 - (i) Foundation or footing drains where flows are not contaminated with process materials such as solvents
 - (j) Uncontaminated excavation dewatering
 - (k) Landscape irrigation
 - (l) Waters used to wash vehicles where surface waters are not impacted by pollutants associated with industrial activities and hazardous cleaning products

The above non-storm water discharges should be eliminated or reduced to the extent feasible. The Permit Board staff will review the above discharges on a case by case basis and may require the coverage recipient to apply for and obtain either an individual or an alternative general NPDES permit.

[11 Miss. Admin. Code Pt. 2, Ch. 2.; 11 Miss. Admin. Code Pt. 6, Ch. 1.]

T-3

OBTAINING AUTHORIZATION:

- (1) Owners and/or operators desiring coverage associated with hot mix asphalt activity under this permit must submit a Hot Mix Asphalt Notice of Intent (HMANOI) and other required submittals in accordance with the requirements of this permit.
- (2) Upon review of a complete HMANOI, MDEQ staff may recommend that coverage not be granted and/or that an alternate permit would be more appropriate. The MDEQ staff recommendations may be brought before the Mississippi Environmental Quality Permit Board (Permit Board) for review and consideration at a regularly scheduled meeting or at a special meeting at its discretion.
- (3) Coverage under this permit will not be granted until all other required MDEQ permits, certifications and approvals are satisfactorily addressed.

ACT1 (HMAGP - General) Permit Applicability and Authorization (continued):

- (4) Owners and/or operators are authorized to emit regulated air emissions and discharge storm water under the terms and conditions of this permit only upon receipt of written notification of approval of coverage by the Permit Board staff. Emissions or discharges without written notification of coverage under this permit or issuance of the respective air and National Pollutant Discharge Elimination System (NPDES) permits constitute a violation of the Mississippi Air and Water Pollution Control Law (Miss. Code Ann. Section 49-17-29(2)(b)).

[11 Miss. Admin. Code Pt. 2, Ch. 2.; 11 Miss. Admin. Code Pt. 6, Ch. 1.]

T-4

THIS PERMIT DOES NOT AUTHORIZE:

- (1) New or existing hot mix asphalt facilities using one or more fuel-fired generator(s) for the purpose of power generation during the asphalt manufacturing process (other than temporary electric power outages). Such facilities are not eligible for coverage under this general permit and will be required to submit an application(s) for the appropriate individual permit(s) as described in ACT2. [11 Miss. Admin. Code Pt. 2, Ch. 2.]
- (2) Discharges of wastewater, other than those allowed under ACT1, Condition T-2(5), or discharges of storm water from industrial activities which result in violation of State Water Quality Standards. If a discharge authorized under this permit is later determined to cause or have the reasonable potential to cause or contribute to the violation of an applicable water quality standard, MDEQ will notify the regulated entity of such water quality violation(s) in writing and will provide the information used by MDEQ to make this determination. The regulated entity must take all necessary actions required to ensure future discharges do not cause or contribute to the violation of a water quality standard. If such violations remain or re-occur, then additional measures, such as the addition of BMPs or the requirement to obtain an individual permit, may be required by the Permit Board. Compliance with this requirement does not preclude any enforcement activity as provided by the Clean Water Act for the underlying violation. [11 Miss. Admin. Code Pt. 6, Ch. 1.]
- (3) Activities that affect waters of the State, including wetlands, without obtaining the necessary U.S. Army Corps of Engineers' (COE) individual Section 404 permit or coverage under a COE nationwide or general permit. Appropriate documentation must be submitted with the HMANOI. [11 Miss. Admin. Code Pt. 6, Ch. 1.]
- (4) Discharges or discharge-related activities that are likely to jeopardize the continued existence of any species that is listed as endangered or threatened under the Endangered Species Act (ESA) or result in the adverse modification or destruction of habitat that is designated as critical under the ESA. Coverage under this permit is available only if the regulated entity's storm water discharges, allowable non-storm water discharges, and discharge-related activities are not likely to jeopardize the continued existence of any species that is listed as endangered or threatened ("listed") under the ESA or result in the adverse modification or destruction of habitat that is designated as critical under the ESA ("critical habitat"). Submission of a signed NOI will be deemed to constitute the regulated entity's certification of eligibility. [11 Miss. Admin. Code Pt. 6, Ch. 1.]

ACT1 (HMAGP - General) Permit Applicability and Authorization (continued):

- (5) Activities which directly and adversely affect properties listed or eligible for listing in the National Register of Historic Places, unless the regulated entity is in compliance with requirements of the National Historic Preservation Act and has coordinated any necessary activities to avoid or minimize such direct and adverse impacts with the appropriate State Historic Preservation Officer. Submission of a signed NOI will be deemed to constitute the regulated entity's certification of eligibility. [11 Miss. Admin. Code Pt. 6, Ch. 1.]
- (6) New or existing hot mix asphalt facilities with stationary emission sources not identified herein which may cause the facility's potential-to-emit to exceed the Prevention of Significant Deterioration (PSD) or Title V major source thresholds. [11 Miss. Admin. Code Pt. 2, Ch. 2.]

ACT2 (HMAGP - General) Obtaining Coverage, Recoverage, and Requesting Termination:**S-1 OBTAINING COVERAGE:**

Persons desiring coverage under this general permit shall submit the following:

- (1) HMANOI Submittal - Submit a HMANOI Form at least thirty (30) days prior to the commencement of the regulated activity. The HMANOI Form is available online at <https://www.mdeq.ms.gov/hmagp/>, or it can be obtained from the MDEQ office at the address given in ACT2, Condition T-1, or by calling 601-961-5171.
- (2) A United States Geological Survey (USGS) topographic map, extending at least one-half mile beyond the facility property boundaries with the site location and outfalls outlined or highlighted.
- (3) A detailed site drawing showing the property layout and indicating the adjoining property including buildings, houses, etc. with all appropriate distances labeled and measured to the nearest residential, recreational or light commercial area. The distance shall be from the emission point, including any raw material storage piles, to the boundary of the residential, recreational or light commercial area.
- (4) Storm Water Pollution Prevention Plan (SWPPP), developed in accordance with ACT4 of this permit.
- (5) Proof of contiguous landowner notification (CLN) and proof of publication in a newspaper, in accordance with ACT2, Conditions S-2 and S-3.

[11 Miss. Admin. Code Pt. 2, Ch. 2.; 11 Miss. Admin. Code Pt. 6, Ch. 1.]

ACT2 (HMAGP - General) Obtaining Coverage, Recoverage, and Requesting Termination (continued):**S-2 CONTIGUOUS LANDOWNER NOTIFICATION:**

An applicant for a new facility or an existing facility proposing a major modification (as defined in ACT6, Condition T-15) must send notification using the Contiguous Landowner Notification Form, which is available online at <https://www.mdeq.ms.gov/hmagp>, to contiguous landowners of the facility via certified-return receipt requested (CRRR) mail. The applicant must submit copies of the signed CRRR receipts which the applicant received or copies of the certificate of mailings, a copy of the land tax records map obtained from the tax assessor office that identifies all contiguous landowners, and a completed copy of the notification form with the applicant's HMANOI or Change Request Form. Failure to notify the contiguous landowners may result in denial or revocation of coverage. Contiguous landowner notification is not required for an existing facility that is not proposing a major modification.

The applicant, in giving this notification to contiguous landowners:

- (1) Must use the most recent tax assessor records, in the county of the proposed project, to identify the names and addresses of the contiguous landowners. The applicant must mail the Contiguous Landowner Notification Form to these names and addresses.
- (2) Is not required to inquire or investigate further than the most recent tax assessor records to determine the names and addresses of the contiguous landowners.
- (3) Is not required to send any additional notifications to contiguous landowners as long as the applicant follows the above procedures.

If the applicant does not receive all of the signed CRRR receipts within 30 days from the contiguous landowner notification postmark date, the Permit Board may issue coverage under the general permit without further delay.

Contiguous landowners who receive certified notifications must submit written comments, if any, to the Mississippi Department of Environmental Quality within 30 days after the postmark date of the certified notification or by the end of the 30-day public comment period as described in ACT2, Condition S-3, whichever is later.

[11 Miss. Admin. Code Pt. 2, Ch. 2.; 11 Miss. Admin. Code Pt. 6, Ch. 1.]

ACT2 (HMAGP - General) Obtaining Coverage, Recoverage, and Requesting Termination (continued):**S-3 PUBLIC PARTICIPATION REQUIREMENTS:**

Applicants seeking initial coverage under this permit or existing coverage recipients proposing a major modification (as defined in ACT6, Condition T-15) shall provide a 30-day period for public comment. These facilities shall have a public notice published once in a daily or weekly newspaper of local distribution. The proof of the newspaper publishing the public notice must be submitted prior to issuance or modification of coverage under the HMAGP. An example of the public notice is available online at <https://www.mdeq.ms.gov/hmagp>. [11 Miss. Admin. Code Pt. 2, R. 2.4.G. and 2.4.H.]

S-4 OBTAINING RECOVERY:

Once the HMAGP is reissued, the MDEQ will provide a Letter of Instruction to active coverage recipients outlining the process for obtaining coverage under the reissued permit. Failure to comply with the provisions of the Letter of Instruction may constitute a violation of the conditions of this permit. Unless specifically requested to do so, resubmittal of the SWPPP is not required if the SWPPP is on-site, current, adequately addresses the sources of pollution at the facility, and is fully compliant with the terms and conditions of the reissued permit. Also, for a facility seeking Recovery that is not specifically listed in Appendix A of this permit, the facility must comply with the public participation requirements of ACT2 Condition S-3. MDEQ reserves the right to require any facility seeking Recovery comply with the public participation requirements of ACT2 Condition S-3.

If the permit is not reissued prior to the expiration date, continued coverage under this permit will be allowed in accordance with ACT5, Condition T-26. [11 Miss. Admin. Code Pt. 2, Ch. 2.; 11 Miss. Admin. Code Pt. 6, Ch. 1.]

S-5 FACILITY EXPANSION AND/OR MODIFICATION NOTIFICATION:

The coverage recipient must notify the Permit Board at least 30 days before undertaking any of the following changes listed below by completing and submitting the Change Request Form. The form shall be submitted according to ACT2, Condition T-1.

- (1) Any planned changes in facility operations that may affect air emissions and/or storm water discharges,
- (2) Any change meeting the definition of a “major modification” in ACT6,
- (3) Removal of the hot mix asphalt plant and/or RAP crusher,
- (4) Any planned changes of ownership, or
- (5) Any changes in information previously submitted in the HMANOI or Recovery Form.

[11 Miss. Admin. Code Pt. 2, Ch. 2.; 11 Miss. Admin. Code Pt. 6, Ch. 1.]

ACT2 (HMAGP - General) Obtaining Coverage, Recoverage, and Requesting Termination (continued):**S-6 REQUIRING AN INDIVIDUAL PERMIT OR ALTERNATIVE GENERAL PERMIT:**

- (1) The Permit Board may require any applicant or coverage recipient to apply for and obtain either an individual NPDES or an alternative general NPDES permit and an individual Air Permit to Construct and/or Air State Permit to Operate. Any interested person may petition the Permit Board to take action under this paragraph. The Permit Board may require any coverage recipient to apply for an individual NPDES and/or Air permit only if the coverage recipient has been notified in writing. Such notice shall include reasons for the Permit Board's decision, an application form and a filing deadline. The Permit Board may grant additional time at its discretion, upon request. If a coverage recipient fails to submit a requested application in a timely manner, coverage under this permit will automatically terminate at the end of the day specified for application submittal.
- (2) Any applicant or coverage recipient may request to be excluded from permit coverage by applying for an individual permit or coverage under another general permit. The applicant or coverage recipient shall submit the appropriate MDEQ forms for the permits required to construct and/or operate the HMA plant.
- (3) Coverage under this permit is automatically terminated upon issuance of all the alternative individual and/or general permits required by Condition S-6(1) of ACT2. When the request for an alternative individual and/or general permit is denied, coverage under this permit continues unless terminated by the Permit Board. [11 Miss. Admin. Code Pt. 2, Ch. 2.; 11 Miss. Admin. Code Pt. 6, Ch. 1.]

S-7 CLOSURE AND TERMINATION REQUIREMENTS:

Should the coverage recipient decide to permanently cease its hot mix asphalt activities and/or abandon the premises upon which it operates, a Closure Plan and a Notice of Termination (NOT) Form shall be submitted to the MDEQ no later than 90 days prior to doing so. The NOT Form is available online at <https://www.mdeq.ms.gov/hmagp>. The Closure Plan shall address how and when all treatment units, industrial machinery, material handling equipment, manufactured products, by-products, raw materials, stored chemicals, and solid and liquid waste and residues will be managed so that no potential environmental hazard will be present upon closure. [11 Miss. Admin. Code Pt. 2, Ch. 2.; 11 Miss. Admin. Code Pt. 6, Ch. 1.]

S-8 REMOVAL OF HOT MIX ASPHALT PLANT:

Should the coverage recipient remove the hot mix asphalt plant and all associated air emissions equipment from the permitted site but not seek to close the site and terminate coverage in accordance with Condition S-7 of ACT2, the coverage recipient shall notify MDEQ according to Condition S-5 of ACT2. The coverage recipient shall continue to comply with the requirements of the HMAGP with exception of those requirements in ACT3. [11 Miss. Admin. Code Pt. 2, Ch. 2; 11 Miss. Admin. Code Pt. 6, Ch. 1.]

ACT2 (HMAGP - General) Obtaining Coverage, Recoverage, and Requesting Termination (continued):**T-1 WHERE TO SUBMIT THE HMANOI, RECOVERAGE, NOT, AND CHANGE REQUEST FORMS:**

Complete and appropriately signed HMANOI, Recoverage, NOT, and Change Request Forms must be submitted to:

Chief, Environmental Permits Division
Mississippi Department of Environmental Quality
Office of Pollution Control
P.O. Box 2261
Jackson, Mississippi 39225

In addition to mailing paper forms, electronic submittals are also recommended. HMANOI and Recoverage Forms can be submitted electronically at the following link: https://www.mdeq.ms.gov/permits/environmental-permits-division/applications-forms/noi_esubmittals/. After December 20, 2025, these forms must be submitted by the coverage recipient electronically as instructed by the MDEQ. [11 Miss. Admin. Code Pt. 2, Ch. 2.; 11 Miss. Admin. Code Pt. 6, Ch. 1.; 40 CFR Part 122.26(g)(1)(iii); 40 CFR Part 122.28(b)(2); 40 CFR Part 122.64(c)]

T-2 FAILURE TO NOTIFY:

Persons who emit air contaminants or discharge storm water to waters of the State associated with the construction and/or operation of a hot mix asphalt plant without the respective permits are in violation of the Mississippi Air and Water Pollution Control Law (Miss. Code Ann. Section 49-17-29(2)(b)). [11 Miss. Admin. Code Pt. 2, Ch. 2.; 11 Miss. Admin. Code Pt. 6, Ch. 1.]

ACT3 (HMAGP - General) Air Emissions Requirements:**L-1 AIR STATIONARY SOURCE DESIGNATION**

A hot mix asphalt plant operating in accordance with the requirements of this permit shall be considered both a moderate stationary source, with respect to the Prevention of Significant Deterioration (PSD) regulations, and a synthetic minor operating source. Hot mix asphalt facilities are also designated as significant minor sources under 11 Miss. Admin. Code Pt. 2, Ch.2. These terms are further defined in 11 Miss. Admin. Code Pt. 2, R. 2.1.C. [11 Miss. Admin. Code Pt. 2, Ch. 2.]

L-2 SITING CRITERIA REQUIRMENTS:

- (1) All air emissions sources at a new or existing hot mix asphalt plant shall be at least 600 feet from the nearest residential area, recreational area, or light commercial area (as defined in ACT6). Air emissions sources includes both point sources and fugitive sources, such as raw material piles.
- (2) The applicant must provide a detailed site drawing showing the property layout and adjoining property, including buildings, houses, etc., with all appropriate distances labeled and measured to the nearest residential, recreational, or light commercial area. The distance shall be from the emission source to the boundary (or property line) of the residential, recreational, or light commercial area. This site map must extend a minimum of a half mile radius from the site for rural areas and 1,500 feet for urban and suburban areas. It may be used as the site map for the SWPPP provided the site map meets the SWPPP requirements listed in ACT4.
- (3) Where buffer zone requirements cannot be met, the Permit Board will consider requests for exceptions to, or variances from, this requirement upon the applicant's submittal of sufficient proof that affected property owners within the subject buffer zone have submitted notarized letters of no objection for the proposed project. If such notarized letters cannot be secured and/or there are letters of objection, the facility shall submit an appropriate individual permit application form.

[11 Miss. Admin. Code Pt. 2, R. 2.2.B(14)(c).; 11 Miss. Admin. Code Pt. 2, R. 2.2.B(14)(f).]

L-3 OPERATIONAL LIMITATIONS:

Owners and operators of sources covered by this general permit shall comply with the following operational limits and fuel usage requirements to ensure potential emissions of regulated air pollutants are below the Title V major source thresholds.

- (1) The HMA dryer/mixer shall be controlled by a baghouse at all times when asphalt is being manufactured.
- (2) Batch mix plants shall not produce more than 360,000 tons of asphalt during any consecutive 12-month rolling period.
- (3) Drum mix plants shall not produce more than 500,000 tons of asphalt during any consecutive 12-month rolling period.

ACT3 (HMAGP - General) Air Emissions Requirements (continued):

- (4) For rock crushers or recycled asphalt pavement (RAP) crushers co-located with an HMA plant and used to provide crushed material to the co-located plant as well as one or more off-site HMA plants, the permittee shall not crush more than 600,000 tons of material during any consecutive 12-month rolling period.
- (5) Fuel combustion in the dryer shall be limited to the following fuels: liquid petroleum gas (LPG), natural gas, fuel oil, liquid bio-derived fuel, and on-specification used oil.
- (6) Liquid fuels shall be limited to 1,000,000 gallons per year during any consecutive 12-month rolling period and shall not have a sulfur content greater than 1.0 percent by weight.
- (7) Facilities shall not combust used oil as fuel for the dryer unless it has been recycled and meets the used oil specifications in 40 CFR 279.11. Liquid bio-derived fuel shall also meet the specifications of 40 CFR 279.11. The used oil specifications of 40 CFR 279.11 consist of the allowable levels provided in (a) through (f) below:
 - (a) Arsenic ≤ 5 ppm;
 - (b) Cadmium ≤ 2 ppm;
 - (c) Chromium ≤ 10 ppm;
 - (d) Lead ≤ 100 ppm;
 - (e) Flash point ≥ 100 degrees Fahrenheit; and
 - (f) Total halogens $\leq 1,000$ ppm.

[11 Miss. Admin. Code Pt. 2, Ch. 1.; 11 Miss. Admin. Code Pt. 2, Ch. 2.]

L-4

NON-NUMERIC LIMITATIONS:

- (1) At all times, including periods of startup, shutdown, and malfunction, the coverage recipient shall, to the extent practicable, maintain and operate the hot mix asphalt plant, including associated air pollution control equipment, in a manner consistent with good air pollution control practices for minimizing emissions. Determination of whether acceptable operating and maintenance procedures are being used will be based on information available to the MDEQ which may include, but is not limited to, monitoring results, opacity observations, review of operating and maintenance procedures, and inspection of the source. [11 Miss. Admin. Code Pt. 2, Ch. 2.; 40 CFR 60.11(d), Subpart A]
- (2) Dust from fugitive emissions on plant facility property shall be kept to a minimum. Dust from the movement of heavy trucks over unpaved or dusty surfaces in and around the plant facility must be controlled by good maintenance, wetting, or application of approved non-hazardous, commercially available dust suppression agents. Oil shall not be used on in-plant roads to minimize dust. [11 Miss. Admin. Code Pt. 2, Ch. 1.]

ACT3 (HMAGP - General) Air Emissions Requirements (continued):

- (3) The necessary facilities shall be constructed so that solids removed in the course of control of air emissions can be disposed of in a manner such as to prevent the solids from becoming windborne and to prevent the materials from entering State waters without the proper environmental permits. [Miss. Code Ann. 49-17-29]
- (4) The air pollution control facilities shall be constructed such that diversion from or bypass of collection and control facilities is not needed except as provided for in 11 Miss. Admin. Code Pt. 2, R. 1.10., "Air Emission Regulations for the Prevention, Abatement, and Control of Air Contaminants." [11 Miss. Admin. Code Pt. 2, R. 1.10.]
- (5) The construction of the stationary source shall be performed in such a manner as to reduce fugitive dust emissions from construction activities to a minimum. [11 Miss. Code Pt. 2, R. 2.5.A(4).]

L-5

HOT MIX ASPHALT PLANT LIMITATIONS, MONITORING, AND TESTING:

- (1) The hot mix asphalt plant is subject to the following requirements (regardless of applicability to 40 CFR Part 60, Subpart I):
 - (a) Particulate matter emissions shall not exceed 0.04 grains/dscf (dry standard cubic feet) from the hot mix asphalt plant;
 - (b) Opacity shall be less than 20% from the hot mix asphalt plant, except during periods of startup, shutdown, and malfunction.[11 Miss. Admin. Code Pt. 2 Ch. 2.; 40 CFR 60.92, Subpart I; 40 CFR 60.11(c)]
- (2) Hot Mix Asphalt Plants that commenced construction or modification after June 11, 1973, are subject to 40 CFR Part 60, Subpart I, and the applicable requirements of 40 CFR Part 60, Subpart A. [40 CFR 60.90, Subpart I]
- (3) The hot mix asphalt plant lime silo(s) (if present) and fly ash silo(s) (if present) shall be equipped with a baghouse or fabric filter for control of air emissions. [11 Miss. Admin. Code Pt. 2, Ch. 2.]
- (4) In the event of a malfunction and/or failure of the pollution control equipment, the coverage recipient shall cease operation of the hot mix asphalt plant until such time as repairs are made and the proper efficiency of the pollution control equipment is restored. The coverage recipient shall have readily available access to equipment sufficient to repair and/or overhaul the pollution control equipment. [11 Miss. Admin. Code Pt. 2, Ch. 2.]
- (5) For the pollution control equipment used to control emissions from the hot mix asphalt plant, including pollution control equipment on the dryer and any silo(s), the coverage recipient shall comply with the following requirements:
 - (a) Regular inspections and any required maintenance shall be performed each month or more often, if necessary, to maintain proper operation of the pollution control equipment.

ACT3 (HMAGP - General) Air Emissions Requirements (continued):

- (b) At least monthly, a check for any leaks and visible emissions of dust from the pollution control equipment on the asphalt dryer shall be performed while asphalt is being produced. If visible emissions are observed, other than during periods of startup, shutdown, or malfunction, the coverage recipient shall immediately cease production and take corrective measures to eliminate leaks and/or eliminate visible emissions prior to restarting production, or the coverage recipient shall immediately conduct a visible emissions evaluation to determine opacity according to EPA Method 9 (40 CFR Part 60, Appendix A). The Method 9 observations shall be conducted by a certified Method 9 observer and shall consist of one (1) six-minute average observation.
- (c) At least monthly, a check for any leaks and visible emissions of dust from the pollution control equipment for the lime silo(s) (if present) and fly ash silo(s) (if present) shall be performed while lime or fly ash is being unloaded to the respective silo. If leaks or abnormal amounts of visible dust are noted, the coverage recipient shall immediately take corrective measures to eliminate leaks and eliminate and/or reduce visible dust to normal levels. (For example, corrective measures may include but are not limited to replacing bags/filters or slowing material transfer rates.)
- (d) The coverage recipient shall install monitoring devices for measuring the pressure drop across the baghouse used to control asphalt dryer emissions. The pressure drop shall be recorded at least monthly, while asphalt is being produced, and compared to the pressure drop range recommended by the baghouse manufacturer or determined using the operating history of the facility.
- (e) The monthly inspections, monthly visible emissions checks (including the results of any Method 9 visible emissions evaluations conducted), and monthly pressure drop readings (including the recommended pressure drop range), as well as any maintenance conducted and corrective measures taken, shall be recorded on the Monthly Air Monitoring Form provided by the MDEQ, or equivalent form prepared by the coverage recipient. With regards to any Method 9 visible emissions evaluations conducted, a Visible Emissions Evaluation Form (available from EPA online) shall be completed and maintained on-site for each opacity determination. These forms must be made available for review upon request by MDEQ personnel.

[11 Miss. Admin. Code Pt. 2, Ch. 2.]

- (6) To demonstrate compliance with the emission limitations in ACT3, Condition L-5(1), the coverage recipient shall conduct performance testing for particulate matter in accordance with EPA Methods 1-5 (40 CFR Part 60, Appendix A) at the frequency specified below. The sampling time and sample volume for each run shall be at least 60 minutes and 0.90 dscm (31.8 dscf). In conjunction with the particulate matter performance test, the coverage recipient shall perform a visible emissions evaluation to determine opacity according to EPA Method 9 (40 CFR Part 60, Appendix A) and the procedures in 40 CFR 60.11. The minimum total time of Method 9 observations shall be three (3) hours (i.e., 30 six-minute averages). If visibility or other conditions prevent the opacity observations from being performed concurrently with the performance testing, the permittee shall reschedule the opacity observations as soon after the performance testing as possible, but no later than thirty (30) days thereafter, and shall notify MDEQ of the rescheduled date. The rescheduled opacity observations shall be conducted (to the extent possible) under the same operating conditions that existed during the stack test. During the performance test, the facility shall be operated at a rate representative of normal operating conditions.

ACT3 (HMAGP - General) Air Emissions Requirements (continued):

- (a) For new asphalt plants, the coverage recipient shall conduct performance testing within 60 days after achieving the maximum production rate at which the facility will operate, but no later than 180 days after startup, and every five (5) years thereafter.
- (b) For existing asphalt plants that have not conducted a performance test within four (4) years of the date coverage is issued under this HMAGP, the permittee shall conduct a performance test within one (1) year of issuance of coverage and every five (5) years thereafter.
- (c) For all other asphalt plants, recurring performance testing shall be conducted within five (5) years of the previous performance test.
- (d) If an asphalt plant is relocated to a different site, the coverage recipient shall conduct performance testing within 60 days after achieving the maximum production rate at which the facility will operate, but no later than 180 days of startup and every five (5) years thereafter.
- (e) If the asphalt plant is not operational within the timeframe required for a performance test in paragraphs (b) through (d) above, such that a performance test cannot be conducted, the coverage recipient shall notify the Air II, Environmental Compliance & Enforcement Division in writing of the delay in testing and shall conduct the required testing within 60 days of commencing operation of the asphalt plant.

[11 Miss. Admin. Code Pt. 2 Ch. 2.; 40 CFR 60.93, Subpart I]

L-6

ROCK CRUSHER AND RAP CRUSHER LIMITATIONS, MONITORING, AND TESTING:

- (1) Any rock crusher or RAP crusher owned or operated by the coverage recipient and constructed, reconstructed, or modified after August 31, 1983, that is (1) a fixed plant (as defined in 40 CFR 60.671) with a crushing capacity exceeding 25 tons per hour or (2) a portable plant (as defined in 40 CFR 60.671) with a crushing capacity exceeding 150 tons per hour shall comply with the requirements of paragraphs (a) or (b) below, as applicable. Rock crushers and RAP crushers are considered part of a nonmetallic mineral processing plant and shall include the following affected equipment up to, but not including, the first storage silo or bin: each crusher, grinding mill, screening operation, bucket elevator, and belt conveyor.
 - (a) Affected equipment that commenced construction, modification, or reconstruction after August 31, 1983, but before April 22, 2008, must meet the following limits, as applicable:
 - (i) 0.05 g/dscm (0.022 gr/dscf) particulate matter (filterable) and 7% opacity for any crusher if using a capture system. The opacity limit only applies to capture systems equipped with a dry control device (i.e., not a wet scrubber).

ACT3 (HMAGP - General) Air Emissions Requirements (continued):

- (ii) 10% opacity from fugitive emissions from transfer points on belt conveyors or from any other affected facility (i.e., screens and belt conveyors associated with the crusher).
 - (iii) 15% opacity from a crusher that does not use a capture system.
 - (iv) 7% opacity for any baghouse controlling emissions from an individual, enclosed storage bin.
- (b) Affected equipment that commenced construction, modification, or reconstruction on or after April 22, 2008 must meet the following limits, as applicable:
- (i) 0.032 g/dscm (0.014 gr/dscf) particulate matter (filterable) for any crusher if using a capture system.
 - (ii) 7% opacity from fugitive emissions from transfer points on belt conveyors or from any other affected facility (i.e., screens and belt conveyors associated with the crusher).
 - (iii) 12% opacity from a crusher that does not use a capture system.
 - (iv) 7% opacity for any baghouse controlling emissions from an individual, enclosed storage bin.

[40 CFR 60.672 and Tables 2 and 3, Subpart OOO]

- (2) For any portable rock or RAP crusher brought on-site that is owned and operated by an entity other than the coverage recipient, the owner and/or operator of the portable rock or RAP crusher shall be responsible for obtaining any necessary permit to construct and operate the portable rock or RAP crusher, as required by 11 Miss. Admin. Code Pt. 2, Ch. 2. [11 Miss. Admin. Code Pt. 2, Ch. 2.]
- (3) If the rock crusher is subject to Condition L-6(1)(b) and uses a baghouse to control emissions, the coverage recipient must conduct quarterly 30-minute visible emissions inspections using EPA Method 22 (40 CFR Part 60, Appendix A-7). The Method 22 test shall be conducted while the baghouse is operating. The test is successful if no visible emissions are observed. If any visible emissions are observed, the owner or operator of the affected facility must initiate corrective action within 24 hours to return the baghouse to normal operation. The coverage recipient must record each Method 22 test, including the date and any corrective actions taken, in a logbook in written or electronic format. The coverage recipient must keep the logbook onsite and make hard or electronic copies of the logbook available to the MDEQ upon request. [40 CFR 60.674(c) and 60.676(b)(1), Subpart OOO]

ACT3 (HMAGP - General) Air Emissions Requirements (continued):

- (4) If the rock crusher is subject to Condition L-6(1)(a)(i) or L-6(1)(b)(i), the coverage recipient shall determine initial compliance with the PM standards by conducting a performance test within 60 days of achieving the maximum production rate at which the rock crusher will operate but no later than 180 days after initial startup, and five (5) years from the previous performance test thereafter. If upon receipt of coverage under the HMAGP more than four (4) years has passed since the previous performance test, the permittee shall conduct a subsequent performance test within one (1) year of issuance of coverage. If the rock crusher is not operated within the first year of coverage under the HMAGP or within five (5) years of the previous test, such that a performance test cannot be conducted, the coverage recipient shall notify the Air II, Environmental Compliance & Enforcement Division in writing of the delay in testing and shall conduct the required testing within 60 days of commencing operation of the rock crusher. The permittee shall conduct the performance test according the procedures in 40 CFR 60.675(a) and (b). [11 Miss. Admin. Code Pt. 2, Ch. 2.; 40 CFR 60.675(a) and (b), Subpart OOO]
- (5) For all other applicable opacity standards in Condition L-6(1), the coverage recipient shall determine initial compliance with the PM standards by conducting a performance test within 60 days of achieving the maximum production rate at which the rock crusher will operate but no later than 180 days after initial startup, and five (5) years from the previous performance test thereafter. If upon receipt of coverage under the HMAGP more than five (5) years as passed since the previous performance test, the permittee shall conduct a subsequent performance test within one (1) year of issuance of coverage. If the rock crusher or ancillary equipment applicable to an opacity standard is not operated within the first year of coverage under the HMAGP or within five (5) years of the previous test, such that a performance test cannot be conducted, the coverage recipient shall notify the Air II, Environmental Compliance & Enforcement Division in writing of the delay in testing and shall conduct the required testing within 60 days of commencing operation of the affected equipment. The permittee shall conduct the performance test according the procedures of EPA Method 9 in 40 CFR Part 60, Appendix A-4 and the procedures of 40 CFR 60.11, with the following additions:
- (a) The minimum distance between the observer and the emission source shall be 15 feet.
 - (b) The observer shall, when possible, select a position that minimizes interference from other fugitive emission sources (e.g., road dust). The required observer position relative to the sun, as specified in Method 9, must be followed.
 - (c) For baghouses controlling enclosed storage bins, the duration of the Method 9 observations shall be one (1) hour (ten 6-minute average). This duration may be reduced to not less than 30 minutes if the baghouse(s) controls a storage bin that operates for less than one (1) hour at a time.
 - (d) For fugitive emissions sources, the duration of the Method 9 observations must be 30 minutes (five 6-minute averages). Compliance must be based on the average of the five 6-minute averages.
 - (e) The coverage recipient may reduce the 30-day advance notification of a performance test to a 7-day advance notice.

[11 Miss. Admin. Code Pt. 2 Ch. 2.; 40 CFR 60.675(a), (c), and (g), Subpart OOO]

ACT3 (HMAGP - General) Air Emissions Requirements (continued):

- (6) MDEQ reserves the right to require additional performance testing if: (1) MDEQ determines that opacity of any emission source is greater than 40% during any inspection, or (2) MDEQ determines through an inspection or records review that the coverage recipient has not complied with requirements of the applicable standard or test procedures. If MDEQ requires additional performance testing, the facility will have 60 days to schedule and complete the test. [11 Miss. Admin. Code Pt. 2 Ch. 2.]

L-7 EMERGENCY STATIONARY INTERNAL COMUSTION ENGINE REQUIREMENTS:

- (1) The coverage recipient shall comply with all applicable federal regulations noted below pertaining to any emergency stationary internal combustion engine (ICE) located at the facility. Emergency stationary ICE are specifically defined in the applicable federal regulation(s).
- (a) New Source Performance Standard (NSPS) 40 CFR 60, Subpart IIII – Standards of Performance for Stationary Compression Ignition Internal Combustion Engines.
 - (b) New Source Performance Standard (NSPS) 40 CFR 60, Subpart JJJJ – Standards of Performance for Stationary Spark Ignition Internal Combustion Engines.
 - (c) National Emission Standards for Hazardous Air Pollutants (NESHAP) 40 CFR 63, Subpart ZZZZ – NESHAP for Stationary Reciprocating Internal Combustion Engines.

[11 Miss. Admin. Code Pt. 2, Ch. 1 and Ch. 8.]

- (2) In accordance with the applicable federal regulation(s), there is no time limit on the use of emergency stationary ICE operated during emergency situations. However, the coverage recipient shall not operate emergency stationary ICE more than 100 hours per calendar year in non-emergency situations, which may include maintenance checks and readiness testing. As part of this 100 hours of non-emergency operation, the coverage recipient may operate the emergency stationary ICE for up to 50 hours per calendar year in non-emergency situations, as specified in the applicable federal regulation(s). [40 CFR 60.4211(f), Subpart IIII; 40 CFR 60.4243(d), Subpart JJJJ; 40 CFR 63.6640(f), Subpart ZZZZ]
- (3) All emergency stationary ICE must be equipped with a non-resettable hour meter prior to startup. For each emergency stationary ICE, the coverage recipient shall maintain a record of the hours of operation of the engine for each calendar year, whether operation was for emergency or non-emergency purposes, and the reason for operation. [40 CFR 60.4209(a) and 60.4214(b), Subpart IIII; 40 CFR 60.4237 and 60.4245(b), Subpart JJJJ; 40 CFR 63.6625(f) and 63.6655(f), Subpart ZZZZ]
- (4) Diesel fuel combusted in any stationary internal combustion engine shall meet the requirements of 40 CFR 1090.305 – Ultra Low-Sulfur Diesel (ULSD) Standards. [40 CFR 60.4207(b), Subpart IIII; 40 CFR 63.6604, Subpart ZZZZ]

ACT3 (HMAGP - General) Air Emissions Requirements (continued):

- (5) For emergency stationary ICE subject to 40 CFR 63, Subpart ZZZZ, the coverage recipient shall change oil and filter every 500 hours of operation or annually, whichever comes first. The coverage recipient shall inspect the air cleaner for compression ignition engines and spark plugs for spark ignition engines every 1,000 hours of operation or annually, whichever comes first, and replace as necessary. The coverage recipient shall inspect all hoses and belts every 500 hours of operation or annually, whichever comes first, and replace as necessary. [40 CFR 63.6603(a) and Table 2d, Subpart ZZZZ]
- (6) For emergency stationary ICE subject to 40 CFR 60, Subpart IIII or Subpart JJJJ, the coverage recipient shall comply by purchasing an engine certified by the manufacturer to meet the applicable emission standards of Subpart IIII or JJJJ, respectively. Documentation of engine certification shall be maintained on-site or off-site, if readily available for MDEQ review upon request (i.e., within 24 hours of the request). [40 CFR 60.4211(c), Subpart IIII; 40 CFR 60.4243(a), Subpart JJJJ]
- (7) For emergency stationary ICE, the coverage recipient shall operate and maintain the stationary ICE according to the manufacturer's emission-related written instructions, change only those emission-related settings that are permitted by the manufacturer, and keep a record of all maintenance conducted. The coverage recipient shall also comply with any applicable requirements in 40 CFR 89, 94, and/or 1068, as they apply. [11 Miss. Admin. Code Pt. 2, Ch. 2.; 40 CFR 60.4211(a), Subpart IIII; 40 CFR 60.4243(a)(1), Subpart JJJJ; 40 CFR 63.6640(a) and Table 6, Subpart ZZZZ]

L-8 GASOLINE DISPENSING OPERATION REQUIREMENTS:

If the coverage recipient operates a gasoline dispensing facility, as defined in ACT6, the coverage recipient shall comply with the following requirements:

- (1) The coverage recipient shall limit the monthly throughput of gasoline to less than 10,000 gallons.
- (2) The coverage recipient must, at all times, operate and maintain the affected source in a manner consistent with safety and good air pollution control practices for minimizing emissions. Determination of whether such operation and maintenance procedures are being used will be based on information available to the MDEQ which may include, but is not limited to, monitoring results, review of operation and maintenance procedures, review of operation and maintenance records, and inspection of the source. [40 CFR 63.11115(a), Subpart CCCCCC]

ACT3 (HMAGP - General) Air Emissions Requirements (continued):

- (3) The coverage recipient shall not allow gasoline to be handled in a manner that would result in vapor releases to the atmosphere for extended periods of time. Measures to be taken shall include, but are not limited to, the following:
- (a) Minimize gasoline spills;
 - (b) Clean up spills as expeditiously as practicable;
 - (c) Cover all open gasoline containers and all gasoline storage tank fill-pipes with a gasketed seal when not in use; and
 - (d) Minimize gasoline sent to an open waste collection system that collects and transports gasoline to reclamation and recycling devices, such as oil/water separators, if applicable.
 - (e) Portable gasoline containers that meet the requirements of 40 CFR part 59, subpart F, are considered acceptable for compliance with paragraph (c) of this condition.

[40 CFR 63.11116(a) and (d), Subpart CCCCCC]

- (4) The coverage recipient shall keep records to demonstrate that the monthly throughput of gasoline is less than the 10,000-gallon threshold level. The coverage recipient is not required to submit any notifications or reports, as specified in 40 CFR 63.11125, 63.11126, or Subpart A, but must have records available within 24 hours of a request by the MDEQ to document the gasoline throughput. [40 CFR 63.11111(e) and 63.11116(b), Subpart CCCCCC]

S-1 AIR REPORTING REQUIREMENTS

- (1) The coverage recipient shall submit notification on the Air Notification of Construction Form provided by MDEQ of the date construction (or reconstruction, as defined in the applicable federal standard) commenced and anticipated date of startup, postmarked no later than 15 days after beginning actual construction. This notification is required for the hot mix asphalt plant, as well as any additional equipment constructed at a later date and subject to a federal standard or otherwise considered a major modification. [11 Miss. Admin. Code Pt. 2, R. 2.5.C(2).; 40 CFR 60.7(a)(1), Subpart A]
- (2) The coverage recipient shall submit notification on the Air Notification of Construction Form provided by MDEQ of the date construction is completed prior to startup of the facility or equipment. This notification is required for the hot mix asphalt plant, as well as any additional equipment constructed at a later date and subject to a federal standard or otherwise considered a major modification. The date of startup shall be assumed to be the date construction is completed unless additional notification is provided of the startup date on the Air Notification of Construction Form. [11 Miss. Admin. Code Pt. 2, R. 2.5.D.; 40 CFR 60.7(a)(3), Subpart A]
- (3) The coverage recipient shall notify MDEQ using the Air Notification of Construction Form provided by MDEQ if construction of the hot mix asphalt plant does not begin within 18 months of issuance or if construction is suspended for 18 months or more. The permittee may request one extension of 18 months on the Form. [11 Miss. Admin. Code Pt. 2, R. 2.5.C(3).]

ACT3 (HMAGP - General) Air Emissions Requirements (continued):

- (4) The coverage recipient shall submit a written test protocol to MDEQ at least thirty (30) days prior to the scheduled test date to ensure that all test methods and procedures are acceptable to the MDEQ. After the first successful submittal of a written test protocol in conjunction with a performance test, the permittee may request that the resubmittal of the testing protocol be waived for subsequent testing by certifying in writing at least thirty (30) days prior to subsequent testing that all conditions for testing remain unchanged, such that the original protocol can and will be followed. In addition, at least TEN (10) DAYS notice should be given prior to the performance test so that a MDEQ observer may be scheduled to witness the test(s). [11 Miss. Admin. Code Pt. 2, R. 2.6.B.; 40 CFR 60.7(a)(7) and 60.8(d), Subpart A]
- (5) The coverage recipient shall submit notification on the Change Request Form of any physical or operational change to an existing facility which may increase the emission rate of any air pollutant to which a federal standard applies, unless that change is specifically exempted under an applicable subpart or in 40 CFR 60.14(e). This notice shall be postmarked 60 days or as soon as practicable before the change is commenced and shall include information describing the precise nature of the change, present and proposed emission control systems, productive capacity of the facility before and after the change, and the expected completion date of the change. The Permit Board may request additional relevant information subsequent to this notice. [11 Miss. Admin. Code Pt. 2, Ch. 2.; 40 CFR 60.7(a)(4), Subpart A]
- (6) The coverage recipient shall submit an annual report by January 31st for the preceding calendar year summarizing the production data for the asphalt plant, production data for rock/RAP crushers (if applicable), liquid fuel usage by the HMA plant, and monthly inspections required by ACT3, Condition L-5(5), including the results of any Method 9 visible emissions observations conducted. This report shall be submitted regardless of whether the asphalt plant is operating or otherwise on-site. This report shall consist of the Annual Air Operating Form, or equivalent form, and shall be submitted to:

Chief, Environmental Compliance and Enforcement Division
Mississippi Department of Environmental Quality
P. O. Box 2261
Jackson, Mississippi 39225

[11 Miss. Admin. Code Pt. 2, R. 2.9.]

- (7) The results from each performance test conducted to meet the requirements in ACT3 shall be submitted to the MDEQ at the address in Condition S-1(6) of ACT3 within sixty (60) days following completion of the test(s). [11 Miss. Admin. Code Pt. 2, R. 2.2.B(11).]

ACT3 (HMAGP - General) Air Emissions Requirements (continued):**R-1 GENERAL AIR RECORDKEEPING REQUIREMENTS:**

- (1) To demonstrate compliance with the requirements of ACT3, Condition L-3, the coverage recipient shall maintain the following records:
 - (a) The coverage recipient shall record (in tons) the monthly asphalt production and material crushed (if applicable), as well as the rolling 12-month total for each (obtained by adding the current month's figures to those for the previous eleven months), on the Annual Air Operating Form, or equivalent form.
 - (b) The coverage recipient shall record (in gallons) the total amount of liquid fuel combusted each month in the dryer and any associated heaters, as well as the rolling 12-month total, on the Annual Air Operating Form, or equivalent form. The coverage recipient shall also maintain records of the date, amount (in gallons), and sulfur content of each shipment of liquid fuel received. The sulfur content may be provided by the supplier or determined by the coverage recipient using an EPA- or ASTM-approved test method for determining the total sulfur content (by weight) in fuel.
 - (c) For HMA plants that utilize used oil, the coverage recipient shall maintain records demonstrating compliance with the on-specification used oil requirements in Condition L-3(7) for each shipment of used oil received. Additionally, for each shipment, the coverage recipient shall maintain records of the name, address, phone number, and EPA identification number for both the used oil marketer and transporter. The coverage recipient or used oil supplier shall determine compliance with the fuel specifications of this permit using EPA- and/or ASTM-approved test methods.
- (2) The coverage recipient shall maintain files of all information (including all reports and notifications) required by ACT3 recorded in a form suitable and readily available for expeditious inspection and review. The files shall be retained for at least five (5) years following the date of each occurrence, measurement, maintenance, corrective action, report, or record. At a minimum, the most recent two (2) years of data shall be retained on-site. The remaining three (3) years of data may be retained off site. Such files may be maintained in hard copy or electronic format. If the facility is no longer operating, all files may be retained off site, as long as they are available for expeditious inspection and review by MDEQ. [11 Miss. Admin. Code Pt. 2, R. 2.9.]

ACT4 (HMAGP - General) Industrial Storm Water Requirements:**R-1 MONITORING AND RECORDS:**

Samples and measurements taken for the purpose of monitoring shall be representative of the monitored activities. Records of any storm water monitoring conducted shall include:

- (1) The date, exact location, and time of sampling measurements,
- (2) The initials or names of the individuals, who performed the sampling or measurements,
- (3) The date(s) and time(s) analyses were performed,
- (4) The initials or names of the individuals who performed the analyses,
- (5) References and written procedures, when available, for the analytical techniques or methods used, and
- (6) The results of such analyses, including the bench sheets, instruments readouts, computer disks or tapes, etc., used to determine these results.

[11 Miss. Admin. Code Pt. 6, Ch. 1.]

R-2 RETENTION OF RECORDS:

Except as otherwise specified herein, all records, reports, forms and information resulting from activities required by ACT4 shall be retained by the coverage recipient on-site, or readily available for a period of at least three (3) years from the date of generation. [11 Miss. Admin. Code Pt. 6, Ch. 1.]

T-1 STORM WATER POLLUTION PREVENTION PLAN (SWPPP) DEVELOPMENT AND CONTENT:

A SWPPP shall be developed and implemented for each facility subject to this permit. A SWPPP shall be prepared in accordance with sound engineering practices and shall identify potential sources of pollution, which may reasonably be expected to affect the quality of storm water discharges associated with industrial activity from the facility. The SWPPP shall describe and ensure the implementation of BMPs which will reduce pollutants in storm water discharges and assure compliance with the terms and conditions of this permit. For assistance in developing a SWPPP, applicants are encouraged to reference the Mississippi Storm Water Pollution Prevention Plan (SWPPP) Guidance Manual for Industrial Facilities or other recognized reference manual of design, such as EPA's "Developing Your Storm Water Pollution Prevention Plan" (February 2009), which are available at <https://www.mdeq.ms.gov/industrial-stormwater/>. [11 Miss. Admin. Code Pt. 6, Ch. 1.]

ACT4 (HMAGP - General) Industrial Storm Water Requirements (continued):**T-2 MINIMUM SWPPP COMPONENTS/DESCRIPTION OF POTENTIAL POLLUTANT SOURCES:**

Each plan shall identify all activities and significant materials which may potentially pollute storm water discharges, including:

- (1) A list of industrial activities exposed to storm water (e.g., ground storage piles, tanks, hoppers, silos, dust containment/collection systems, and truck/equipment cleaning and maintenance areas, etc.).
- (2) A list of the materials and pollutants associated with each of the activities identified above (e.g., used oil, zinc, solvents, etc.).
- (3) A narrative description of the materials and pollutants identified above. The narrative shall include, but not limited to:
 - (a) Method of storage or disposal,
 - (b) Management practices employed to minimize contact of these materials with storm water,
 - (c) Existing structural and non-structural control measures to reduce pollutants in storm water runoff, and
 - (d) Any treatment the storm water receives.
- (4) A monthly updated list of spills and leaks of toxic or hazardous pollutants that have occurred at the facility. Spills and leaks must be documented on the Monthly Spill and Leak Log Sheet, or equivalent form. The Monthly Spill and Leak Log Sheet can be found on the MDEQ website at <https://www.mdeq.ms.gov/hmagp/>. If no spills have occurred, the form shall be completed by checking the available box and signing it as indicated. Coverage recipients may use an alternate form to record this information, so long as it includes all of the information on the above referenced form and it is updated monthly. The completed forms shall be filed on-site with the SWPPP and made available to MDEQ personnel for inspection upon request.
- (5) An updated summary of all storm water sampling data (if available), including a description of associated pollutants of concern (see Definitions in ACT6).
- (6) The coverage recipient shall prepare a detailed scaled site map showing the property layout with site boundaries and indicating the following features:
 - (a) Surface water bodies,
 - (b) Drainage area of each storm water outfall identified by number,
 - (c) Direction of flow for each area (designated by arrow),
 - (d) Location and a description of existing structural and nonstructural control measures to reduce pollutants in storm water runoff,
 - (e) Location of any storm water treatment activities,
 - (f) Location of any storm drain inlets,

ACT4 (HMAGP - General) Industrial Storm Water Requirements (continued):

- (g) Location of industrial activities, such as:
 - (i) Fuel storage and dispensing locations,
 - (ii) Vehicle/equipment repair, maintenance and cleaning areas,
 - (iii) Materials storage and handling areas, including location of baghouses and dust control devices,
 - (iv) Loading/unloading areas, and
 - (v) Process or manufacturing areas.
 - (h) Location of housekeeping practices,
 - (i) Storm water conveyances (ditches, pipes, & swales), and
 - (j) Any post-construction control measures,
- (7) A topographic map extending at least 1/2 mile beyond the facility property boundaries. This may be part of the above required site map.
- (8) A summary of the types of pollutants likely to be present for each area of the facility generating storm water discharges with a reasonable potential for containing significant amounts of pollutants.

[11 Miss. Admin. Code Pt. 6, Ch. 1.]

T-3

MINIMUM SWPPP COMPONENTS/DESCRIPTION OF STORM WATER MANAGEMENT CONTROLS:

The owner or operator shall describe appropriate storm water management controls addressing identified potential pollution sources and implement such controls. The description shall include a schedule for implementing the following minimum components:

- (1) Pollution Prevention Manager/Committee. The SWPPP shall specify individual(s) responsible for developing the SWPPP and assisting the facility manager in its implementation, maintenance, and revision.
- (2) Risk Identification and Assessment/Material Inventory. The SWPPP shall assess the pollution potential of various sources at the facility including loading and unloading operations; outdoor storage, manufacturing or processing activities; significant dust or particulate generating processes and on-site waste disposal practices. Factors to consider include the toxicity and quantity of chemicals used, produced, or discharged, the likelihood of contact with storm water and history of significant leaks or spills of toxic or hazardous pollutants. The plan shall include an inventory of materials handled. Based on the Risk Identification and Material Inventory, the plan shall specify management controls, and, if necessary, structural controls to reduce or eliminate the potential for pollutants in the storm water discharges.

ACT4 (HMAGP - General) Industrial Storm Water Requirements (continued):

- (3) Sediment and Erosion Prevention. The SWPPP shall identify areas with a high potential for soil erosion, and specify prevention measures to limit erosion.
- (4) Preventive Maintenance. A preventive maintenance program shall involve inspection and maintenance of storm water management devices (cleaning oil/water separators, catch basins, etc.) and the inspecting and testing of equipment to preclude breakdowns or failures that may cause pollution.
- (5) Good Housekeeping. The owner or operator shall describe and list practices appropriate to prevent pollutants from entering storm water from industrial activities due to poor housekeeping. The owner or operator shall:
 - (a) Designate areas for equipment maintenance and repair;
 - (b) Provide waste receptacles at convenient locations (outdoor waste receptacles must be covered);
 - (c) Provide regular collection of waste;
 - (d) Provide protected storage areas for chemicals, paints, solvents, fertilizers, fine granular solids (e.g., cement, fly ash, kiln dust), and other potentially toxic materials;
 - (e) Provide adequately maintained sanitary facilities;
 - (f) Provide secondary containment around on-site single fuel or chemical container with a capacity greater than 660 gallons or any combination of containers which has an above ground bulk storage capacity of more than 1,320 gallons; and
 - (g) Provide containment for raw material stockpiles (if necessary to prevent material from entering waters of the State).
- (6) Spill Prevention and Response Procedures. The SWPPP shall clearly identify potential spill areas and their drainage points. The plan should specify material handling procedures and storage requirements. Procedures for cleaning up spills shall be identified and made available to the appropriate personnel. The necessary clean up equipment should be available to personnel.
- (7) Employee Training. The SWPPP shall specify periodic training for personnel that are responsible for implementing and/or complying with the requirements of the SWPPP, as identified in ACT5, Condition T-15.
- (8) Illicit Connections - Evaluation and Certification. The owner or operator shall certify at least every five (5) years that storm water discharges have been evaluated for the presence of non-allowable, non-storm water discharges. The certification shall include method(s) of evaluation, date(s), observation point(s) and result(s). The evaluation method(s) may include, but not be limited to, one or more of the following dry weather screening methods: 1) visual inspection, 2) plant schematic review, and 3) dye testing. The certification shall be filed on-site with the SWPPP and made available to MDEQ personnel for inspection upon request. This certification may not be feasible if the owner or operator does not have access to the discharge before it enters the ultimate receiving conduit. In such cases, the SWPPP shall include why the certification required by this part was not feasible.

ACT4 (HMAGP - General) Industrial Storm Water Requirements (continued):

- (9) Routine Visual Site Inspections. The purpose of conducting visual site inspections is to make sure storm water discharges are free from objectionable characteristics in observable amounts (i.e., turbidity, color, sheen, etc.). The SWPPP shall describe the policy and procedures for routine visual site inspections, including frequencies and areas to be inspected. Areas to be inspected must include all industrial activities exposed to storm water identified in ACT4, T-2(1). These areas must be checked for evidence of pollutants entering the storm water drainage system and also identify conditions which may give rise to contamination of storm water runoff. The frequency of inspections shall be performed as often as needed but no less than once monthly. If feasible, the inspections should be conducted during or after storm events. As part of the inspection, storm water should be collected in a clean, clear jar and examined in a well-lit area. The SWPPP should outline procedures consistent with the requirements of ACT4, T-6 to investigate, correct and document instances in which visible pollutants are observed.
- (10) Non-Storm Water Discharge Management. The SWPPP must identify any allowable non-storm water discharges, identified in ACT1, T-2(5), except for flows from actual fire-fighting activities, which are combined with storm water discharges associated with industrial activity at the site. Non-storm water discharges should be eliminated or reduced to the extent feasible. The SWPPP must identify and ensure the implementation of appropriate BMPs for the non-storm water component of the discharge. [11 Miss. Admin. Code Pt. 6, Ch. 1.]
- (11) Storm Water Management. The SWPPP should provide for the management of storm water volume through its diversion, infiltration, storage, or re-use.

[11 Miss. Admin. Code Pt. 6, Ch. 1.]

T-4 SWPPP IMPLEMENTATION REQUIREMENTS:

The coverage recipient shall:

- (1) Implement the SWPPP and retain a copy of the SWPPP at the permitted site. Failure to implement the SWPPP is a violation of permit requirements. A copy of the SWPPP must be made available to the MDEQ inspectors for review at the time of an on-site inspection.
- (2) Comply with the terms of the SWPPP upon commencement of the regulated activity.
- (3) If notified at any time by the MDEQ that the SWPPP does not meet the minimum requirements, amend the SWPPP and certify in writing that the requested changes have been made. Unless otherwise provided, the coverage recipient shall have 30 days to make the requested changes.
- (4) Amend the SWPPP whenever there is a change in design, construction, operation, or maintenance, which may increase the discharge of pollutants to waters of the State or the SWPPP proves to be ineffective in controlling storm water pollutants. The coverage recipient shall submit it to the MDEQ within 30 days of amendment.

ACT4 (HMAGP - General) Industrial Storm Water Requirements (continued):

- (5) If after coverage issuance, a specific wasteload allocation is established that would apply to the facility's discharge, the facility must implement steps necessary to meet that allocation.
- (6) Submit any new storm water sampling data within 90 days of sampling.

[11 Miss. Admin. Code Pt. 6, Ch. 1.]

T-5 SWPPP COMPLIANCE WITH LOCAL STORM WATER ORDINANCES:

- (1) The SWPPP shall be in compliance with all local storm water ordinances.
- (2) When storm water discharges into a Municipal Separate Storm Sewer System (MS4), the coverage recipient shall make the SWPPP available to the local authority upon request. [11 Miss. Admin. Code Pt. 6, Ch. 1.]

T-6 MONTHLY SITE INSPECTIONS:

All areas contributing to storm water discharges associated with industrial activity as identified ACT4, Condition T-2(1) must be visually inspected as often as needed but no less than once monthly. The inspection must evaluate whether the SWPPP adequately minimizes pollutant loadings and is properly implemented in accordance with the terms of this permit or whether additional control measures are needed. This includes observing storm water discharges for obvious industrial storm water pollution such as color, lack of clarity, floating solids, settled solids, suspended solids, foam, and oil sheens.

As part of the inspection, storm water should be collected in a clean, clear jar and examined in a well-lit area. Should any of the objectionable characteristics described above be observed, coverage recipient shall investigate upstream from the sample location to identify the potential sources of pollution and implement corrective action. The results of all jar test inspections shall be documented on the Monthly Site Inspection Form, which can be found on the MDEQ website at <https://www.mdeq.ms.gov/hmagp/>. Coverage recipients may use an alternate form to record this information, so long as it includes all of the information on the above referenced form. Completed forms shall be filed on-site with the SWPPP and made available to MDEQ personnel for inspection upon request.

The results of all inspections must be documented on the Monthly Site Inspection Form, or equivalent form. The Monthly Site Inspection Form can be found on the MDEQ website at <https://www.mdeq.ms.gov/hmagp/>. Any poorly functioning controls or BMPs, non-compliant discharges, or any other deficiencies observed during the inspections required under this permit shall be corrected as soon as possible, but not to exceed 7 days of the inspection unless prevented by unsafe weather conditions or specified differently elsewhere in this permit. If the deficiency would result in environmental harm, the deficiencies shall be corrected immediately.

[11 Miss. Admin. Code Pt. 6, Ch. 1.]

ACT4 (HMAGP - General) Industrial Storm Water Requirements (continued):**T-7 ANNUAL SWPPP EVALUATION:**

Coverage recipients shall conduct a comprehensive evaluation of the facility's SWPPP by December 31st of each calendar year. The evaluation shall assess the effectiveness and accuracy of the SWPPP and ensure that the SWPPP is current, up to date, and meets all the requirements of ACT4, T-3. Should the SWPPP need to be amended based on the findings of any evaluation, a copy of the amended SWPPP must be submitted to MDEQ in accordance with Condition ACT4, T-4(4). The evaluation of the SWPPP must be documented on the Annual SWPPP Evaluation Form, or equivalent form. The Annual SWPPP Evaluation Form can be found on the MDEQ website at <https://www.mdeq.ms.gov/hmagp/>. [11 Miss. Admin. Code Pt. 6, Ch. 1.]

T-8 NON-NUMERIC LIMITATIONS:

Storm water discharges shall be free from:

- (1) Debris, oil, scum, and other floating materials other than in trace amounts,
- (2) Eroded soils and other materials that will settle to form objectionable deposits in receiving waters,
- (3) Suspended solids, turbidity and color at levels inconsistent with the receiving waters, and
- (4) Chemicals in concentrations that would cause violation of State Water Quality Criteria in the receiving waters.

[11 Miss. Admin. Code Pt. 6, Ch. 1.]

ACT5 (HMAGP - General) Standard Requirements Applicable to All ACTs:**R-1 MAINTAINING ELECTRONIC DOCUMENTS:**

Any documents required by this permit may be kept electronically but must be readily available during site inspection or upon request. [11 Miss. Admin. Code Pt. 2, Ch. 2.; 11 Miss. Admin. Code Pt. 6, Ch. 1.]

S-1 NONCOMPLIANCE NOTIFICATION – TWENTY-FOUR HOUR ORAL AND FIVE DAY WRITTEN REPORTING:

- (1) The coverage recipient shall report any noncompliance which may endanger health or the environment. Any information shall be provided orally within 24 hours from the time the coverage recipient becomes aware of the circumstances. A written submission shall also be provided within 5 days of the time the coverage recipient becomes aware of the circumstances. The written submission shall contain a description of the noncompliance and its cause; the period of noncompliance, including exact dates and times, and if the noncompliance has not been corrected, the anticipated time it is expected to continue; and steps taken or planned to reduce, eliminate, and/or prevent recurrence of the noncompliance.
- (2) The following shall be included as information which must be reported within 24 hours under this paragraph.
 - (a) Any unanticipated bypass which exceeds any effluent limitation in the permit.
 - (b) Any upset which exceeds any effluent limitation in the permit.
 - (c) Violation of a maximum daily discharge limitation for any of the pollutants listed by the Permit Board in the permit to be reported within 24 hours.
- (3) The Executive Director may waive the written report on a case-by-case basis for reports under paragraph (1) of this section if the oral report has been received within 24 hours.

All reports required by this condition which are submitted after December 20, 2025, shall be submitted by the coverage recipient electronically as instructed by MDEQ. [11Miss. Admin. Code Pt. 6, Ch. 1. 1.1.4.A(29)(e)., 40 CFR 122.41(l)(6)]

S-2 NONCOMPLIANCE NOTIFICATION – OTHER NONCOMPLIANCE:

The coverage recipient shall report all instances of noncompliance not reported under the twenty-four hour reporting requirements, at the time monitoring reports are submitted or within 30 days from the end of the month in which the noncompliance occurs. The reports shall contain the same information as is required under the twenty-four hour reporting requirements contained in this permit. All reports required by this condition which are submitted after December 20, 2025, shall be submitted by the coverage recipient electronically as instructed by MDEQ. [11Miss. Admin. Code Pt. 6, R. 1.1.4.A(29)(f)., 40 CFR 122.41(l)(7).]

ACT5 (HMAGP - General) Standard Requirements Applicable to All ACTs (continued):**S-3 NONCOMPLIANCE NOTIFICATION - OTHER INFORMATION:**

Where the coverage recipient becomes aware that it failed to submit any relevant facts in a permit application, or submitted incorrect information in a permit application or in any report to the Permit Board, it shall promptly submit such facts or information. [11 Miss. Admin. Code Pt. 6, Ch. 1. 1.1.4.A(29)(g).]

S-4 BYPASSING NOTICE:

Anticipated bypass – If the coverage recipient knows in advance of the need for a bypass, it shall submit prior notice, if possible at least ten days before the date of the bypass.

Unanticipated bypass – The coverage recipient shall submit notice of an unanticipated bypass as required by the twenty-four hour reporting requirements set forth in this permit.

All reports required by this condition which are submitted after December 20, 2025, shall be submitted by the coverage recipient electronically as instructed by MDEQ. [40 CFR 122.41(m)(3)]

T-1 DUTY TO COMPLY:

The coverage recipient must comply with all conditions of this permit. Any permit noncompliance constitutes a violation and is grounds for enforcement action, coverage termination, revocation and reissuance, or modification, or denial of a renewal application. [11 Miss. Admin. Code Pt. 2, Ch. 2., 11 Miss. Admin. Code Pt. 6, Ch. 1.]

T-2 DUTY TO REAPPLY:

If the coverage recipient wishes to continue an activity regulated by this permit after the expiration date of this permit, coverage recipient must apply for and obtain authorization as required by the new permit. [11 Miss. Admin. Code Pt. 2, Ch. 2., 11 Miss. Admin. Code Pt. 6, Ch. 1.]

T-3 DUTY TO MITIGATE:

The coverage recipient shall take all reasonable steps to minimize or prevent any discharge in violation of this permit which is likely to adversely affect human health or the environment. [11 Miss. Admin. Code Pt. 2, Ch. 2., 11 Miss. Admin. Code Pt. 6, Ch. 1.]

ACT 5 (HMAGP - General) Standard Requirements Applicable to All ACTs (continued):**T-4 DUTY TO PROVIDE INFORMATION:**

The coverage recipient shall furnish to the Permit Board, within a reasonable time, any relevant information which the Permit Board may request to determine whether cause exists for modifying, revoking and reissuing, or terminating coverage, or to determine compliance with this permit. The coverage recipient shall also furnish to the Permit Board, upon request, copies of records required to be kept by this permit. [11 Miss. Admin. Code Pt. 2, Ch. 2., 11 Miss. Admin. Code Pt. 6, Ch. 1.]

T-5 SIGNATORY REQUIREMENTS:

All HMANOIs and Requests for Recoverage shall be signed as follows:

- (1) For a corporation by a responsible corporate officer. For this permit, a responsible corporate officer means:
 - (a) a president, secretary, treasurer, or vice-president of the corporation in charge of a principal business function, or any other person who performs similar policy or decision-making functions for the corporation; or
 - (b) the manager of one or more manufacturing, production or operating facilities, provided, the manager is authorized to make management decisions which govern the operation of the regulated facility including having the explicit or implicit duty of making major capital investment recommendations, and initiating and directing other comprehensive measures to assure long term environmental compliance with environmental laws and regulations; the manager can ensure that the necessary systems are established or actions taken to gather complete and accurate information for permit application requirements; and where authority to sign documents has been assigned or delegated to the manager in accordance with corporate procedures;
- (2) For a partnership or sole proprietorship by a general partner or the proprietor, respectively; or
- (3) For a municipal, State, Federal, or other public agency by either a principal executive officer or ranking elected official. For purposes of this section, a principal executive officer of a Federal agency includes:
 - (a) the chief executive officer of the agency, or
 - (b) a senior executive officer having responsibility for the overall operations of a principal geographic unit of the agency.

[11 Miss. Admin. Code Pt. 2, Ch. 2., 11 Miss. Admin. Code Pt. 6, Ch. 1.]

ACT 5 (HMAGP - General) Standard Requirements Applicable to All ACTs (continued):**T-6 DULY AUTHORIZED REPRESENTATIVE:**

All reports required by this permit, and other information requested by the Permit Board shall be signed by a person described in ACT 5, Condition T-5, or by a duly authorized representative of that person. A person is a duly authorized representative when:

- (1) The authorization is made in writing and submitted to the Permit Board by a person described in ACT 5, Condition T-5.
- (2) The authorization specifies either an individual or a position having responsibility for the overall operation of the regulated activity, such as: manager, operator of a well or well field, superintendent, person of equivalent responsibility, or an individual or position having overall responsibility for environmental matters for the company. (A duly authorized representative may be either a specified individual or position.)

[11 Miss. Admin. Code Pt. 2, Ch. 2., 11 Miss. Admin. Code Pt. 6, Ch. 1.]

T-7 CHANGES IN AUTHORIZATION:

If an authorization is no longer accurate because a different individual or position has permit responsibility, a new authorization satisfying the requirements of ACT 5, Conditions T-5 and T-6 must be submitted to the Permit Board prior to or together with any reports, information or applications signed by the representative. [11 Miss. Admin. Code Pt. 2, Ch. 2., 11 Miss. Admin. Code Pt. 6, Ch. 1.]

T-8 CERTIFICATION:

Any person signing documents under this section shall make the following certification:

"I certify under penalty of law that this document and all attachments were prepared under my direction or supervision in accordance with a system designed to assure that qualified personnel properly gathered and evaluated the information submitted. Based on my inquiry of the person or persons who manage the system, or those persons directly responsible for gathering the information, the information submitted is, to the best of my knowledge and belief, true, accurate and complete. I am aware that there are significant penalties for submitting false information, including the possibility of fine and imprisonment for knowing violations." [11 Miss. Admin. Code Pt. 6, Ch. 1.]

T-9 OIL AND HAZARDOUS SUBSTANCE LIABILITY:

Nothing in this permit shall relieve the coverage recipient from responsibilities, liabilities, or penalties under Section 311 of the Federal Clean Water Act (33 U.S.C. Section 1321). [11 Miss. Admin. Code Pt. 6, Ch. 1.]

ACT5 (HMAGP - General) Standard Requirements Applicable to All ACTs (continued):**T-10 PROPERTY RIGHTS:**

The issuance of this permit does not convey any property rights of any sort, nor any exclusive privileges, nor does it authorize any injury to private property nor any invasion of personal rights, nor any infringement of Federal, State or local laws or regulations. [11 Miss. Admin. Code Pt. 2, Ch. 2., 11 Miss. Admin. Code Pt. 6, Ch. 1.]

T-11 SEVERABILITY:

The provisions of this permit are severable, and if any provision of this permit, or the application of any provision of this permit to any circumstance, is held invalid, the application of such provision to other circumstances, and the remainder of this permit shall not be affected thereby. [11 Miss. Admin. Code Pt. 2, Ch. 2., 11 Miss. Admin. Code Pt. 6, Ch. 1.]

T-12 TRANSFER OF OWNERSHIP OR CONTROL:

Coverage under this permit is not transferable to any person except after notice to and approval by the Permit Board. The Permit Board may require the coverage recipient to obtain another NPDES permit and/or Air Permit. Transfer of coverage requests shall be submitted to the Permit Board using the Transfer and/or Name Change Request Form available online and shall be submitted to the MDEQ address listed in ACT2, Condition T-1. [11 Miss. Admin. Code Pt. 2, Ch. 2., 11 Miss. Admin. Code Pt. 6, Ch. 1.]

T-13 PROPER OPERATION AND MAINTENANCE:

The coverage recipient shall at all times properly operate and maintain all facilities and systems of treatment and control (and related appurtenances) which are installed or used by the coverage recipient to achieve compliance with the conditions of this permit, including the SWPPP. Proper operation and maintenance includes adequate laboratory controls with appropriate quality assurance procedures and requires the operation of backup or auxiliary facilities when necessary to achieve compliance with permit conditions. [11 Miss. Admin. Code Pt. 2, Ch. 2., 11 Miss. Admin. Code Pt. 6, Ch. 1.]

T-14 BYPASS PROHIBITION:

Bypass (see 40 CFR 122.41(m)) is prohibited and enforcement action may be taken against a coverage recipient for a bypass, unless: a) the bypass was unavoidable to prevent loss of life, personal injury, or severe property damage; b) there were no feasible alternatives to the bypass, such as the use of auxiliary treatment facilities, retention of untreated wastes, or maintenance during normal periods of equipment downtime (this condition is not satisfied if the coverage recipient should, in the exercise of reasonable engineering judgment, have installed adequate backup equipment to prevent a bypass which occurred during normal periods of equipment downtime or preventive maintenance); and c) the coverage recipient submitted notices per ACT5, Condition S-4. [11 Miss. Admin. Code Pt. 6, Ch. 1.]

ACT5 (HMAGP - General) Standard Requirements Applicable to All ACTs (continued):**T-15 PERSONNEL TRAINING PROGRAM REQUIREMENTS:**

The coverage recipient shall develop and implement a program for initial and periodic refresher training of personnel that are responsible for implementing and/or complying with the requirements of this permit. Training for all personnel that are responsible for implementing and/or complying with the requirements of this permit shall be performed within twelve (12) months of issuance of coverage or recovery under this permit. Newly hired employees responsible for implementing and/or complying with the requirements of this permit shall receive initial training prior to performing such responsibilities. Each employee shall receive refresher training by December 31st of each calendar year.

Training shall at a minimum address, but not be limited to, the following elements:

- (1) Permit conditions and limitations for each applicable activity (i.e., air emissions and industrial storm water);
- (2) Operation, maintenance and inspection of air emission control equipment;
- (3) Procedures for responding to upset conditions of air emission control equipment;
- (4) SWPPP goals and plan components identified in this ACT including:
 - (a) Housekeeping and pollution prevention requirements,
 - (b) Spill prevention and response procedures,
 - (c) Identification and elimination of non-allowable, non-storm water discharges, and
 - (d) Installation, maintenance and inspection of BMPs for industrial storm water and/or post-construction storm water.
- (5) Procedures for monitoring compliance with non-numeric and numeric limitations prescribed in the permit.
- (6) Recordkeeping, reporting, and record retention requirements (includes understanding the records filing system and being able to produce the required permit documentation during an MDEQ on-site inspection).
- (7) Release reporting and non-compliance notification and requirements.
- (8) Applicable standard requirement contained in ACT5.

Personnel training conducted to meet the requirements of this ACT shall be documented on the Personnel Training Form, or equivalent form. Training records shall include employee's name, date of training, contents of training, and the employee's signature acknowledging that training was received. The Personnel Training Form can be found on the MDEQ website at <https://www.mdeq.ms.gov/hmagp/>.

ACT 5 (HMAGP - General) Standard Requirements Applicable to All ACTs (continued):**T-16 UPSET CONDITIONS:**

An upset (see 40 CFR 122.41(n)) constitutes an affirmative defense to an action brought for noncompliance with technology-based permit limitations if a coverage recipient shall demonstrate, through properly signed, contemporaneous operating logs, or other relevant evidence, that:

- (1) An upset occurred and the coverage recipient can identify the specific cause(s) of the upset,
- (2) The permitted facility was at the time being properly operated at the time of the upset,
- (3) The coverage recipient submitted notices per ACT5, Condition S-1(2)(b), and
- (4) The coverage recipient took remedial measures as required under ACT5, Condition T-3. In any enforcement proceeding, the coverage recipient has the burden of proof that an upset occurred. No determination made during administrative review of claims that noncompliance was caused by upset, and before an action for noncompliance is initiated, will be considered a final administrative action subject to judicial review.

[11 Miss. Admin. Code Pt. 6, Ch. 1.]

T-17 INSPECTION AND ENTRY:

The coverage recipient shall allow the Permit Board staff or an authorized representative, upon the presentation of credentials and other documents as may be required by law, to:

- (1) Enter upon the owner's or operator's premises where a regulated activity is located or conducted or where records must be kept under the conditions of this permit;
- (2) Have access to and copy at reasonable times any records that must be kept under the conditions of this permit;
- (3) Inspect at reasonable times any facilities or equipment (including monitoring and control equipment), practices, or operations regulated or required under this permit; and
- (4) Sample or monitor at reasonable times, for the purposes of assuring permit compliance or as otherwise authorized by the Clean Water Act, any substances or parameters at any location.

[Miss. Code Ann. 49-17-21.; 11 Miss. Admin. Code Pt. 6, Ch. 1.]

ACT 5 (HMAGP - General) Standard Requirements Applicable to All ACTs (continued):**T-18 PERMIT ACTIONS:**

This permit may be modified, revoked and reissued, or terminated for cause. A request by the coverage recipient for permit or coverage modification, revocation and reissuance, or termination, or a certification of planned changes or anticipated noncompliance does not stay any permit condition. [11 Miss. Admin. Code Pt. 2, Ch. 2., 11 Miss. Admin. Code Pt. 6, Ch. 1.]

T-19 RELEASE REPORTING:

Releases into the environment of hazardous substances, oil, and pollutants or contaminants, which pose a threat to applicable water quality standards or causes a film, sheen or discoloration of State waters, shall be reported to the:

(1) Mississippi Emergency Management Agency (601) 933-6362 or (800) 222-6362; or

(2) National Response Center (800) 424-8802.

[11 Miss. Admin. Code Pt. 6, Ch. 1.]

T-20 REOPENER CLAUSE:

If there is evidence indicating potential or realized impacts on air and/or water quality due to hot mix asphalt activities covered by this permit, the coverage recipient may be required to obtain an individual permit(s) or an alternative general permit in accordance with ACT2, Condition S-6, or the permit may be modified to include different limitations and/or requirements. [11 Miss. Admin. Code Pt. 2, Ch. 2., 11 Miss. Admin. Code Pt. 6, Ch. 1.]

T-21 PERMIT MODIFICATION:

Permit modification or revocation will be conducted according to 40 CFR 122.62, 122.63, 122.64 and 124.5 and 11 Miss. Admin. Code Pt. 2, R. 2.2.C. [11 Miss. Admin. Code Pt. 2, Ch. 2., 11 Miss. Admin. Code Pt. 6, Ch. 1.]

T-22 SPILL PREVENTION AND BEST MANAGEMENT PLANS:

Any facility which has above ground bulk storage capacity of more than 1,320 gallons or any single container with a capacity greater than 660 gallons of materials and/or liquids (including but not limited to, all raw, finished and/or waste material) with chronic or acute potential for pollution impact on waters of the State, and not subject to Mississippi Hazardous Waste Management Regulations or 40 CFR 112 (Oil Pollution Prevention) regulations, shall provide secondary containment as found in 40 CFR 112 or equivalent protective measures such as trenches or waterways which would conduct any tank releases to a permitted treatment system or sufficient equalization or treatment capacity needed to prevent chronic/acute pollution impact. [11 Miss. Admin. Code Pt. 6, Ch. 1.]

ACT 5 (HMAGP - General) Standard Requirements Applicable to All ACTs (continued):**T-23 TOXIC POLLUTANTS NOTIFICATION REQUIREMENTS:**

The coverage recipient shall comply with the applicable provisions of 40 CFR 122.42. [11 Miss. Admin. Code Pt. 6, Ch. 1.]

T-24 CIVIL AND CRIMINAL LIABILITY:

- (1) Any person who violates a term, condition or schedule of compliance contained within this permit, or the Mississippi Air and Water Pollution Control Law, is subject to the actions defined by the Mississippi Air and Water Pollution Control Law (Miss. Code Ann. Sections 49-17-1 through 49-17-43).
- (2) Except as provided in permit conditions on "Bypassing" and "Upsets," nothing in this permit shall be construed to relieve the coverage recipient from civil or criminal penalties for noncompliance.
- (3) It shall not be the defense of the coverage recipient in an enforcement action that it would have been necessary to halt or reduce the permitted activity in order to maintain compliance with the conditions of this permit.

[11 Miss. Admin. Code Pt. 2, Ch. 2., 11 Miss. Admin. Code Pt. 6, Ch. 1.]

T-25 CONTINUATION OF EXPIRED GENERAL PERMIT:

If this permit is not reissued prior to the expiration date, it will be administratively continued and remain in force and effect. Permit coverage will continue and the coverage recipient shall be bound by the conditions of this permit until one of the following conditions occur:

- (1) The coverage recipient obtains recoverage under the reissued general permit;
- (2) The coverage recipient submits a Notice of Termination Form and receives written concurrence from MDEQ;
- (3) Authority to construct has expired under Condition T-26 of ACT5;
- (4) The Permit Board issues individual permits and/or a general permit addressing air emissions and water discharges from the hot mix asphalt facility; or
- (5) A formal permit decision by the Permit Board to not reissue the general permit, at which time the coverage recipient must seek coverage under an alternative general permit or an individual permit.

ACT5 (HMAGP - General) Standard Requirements Applicable to All ACTs (continued):

Six (6) months after the HMAGP is reissued, no coverage shall remain in effect under the previous general permit unless a complete Recoverage Form and other required submittals have been received by MDEQ.

[11 Miss. Admin. Code Pt. 6, Ch.1.; 11 Miss. Admin. Code Pt. 2, Ch. 2.]

T-26

EXPIRATION OF COVERAGE:

Coverage under this permit shall expire prior to the date on the cover page if construction of the hot mix asphalt plant does not begin within eighteen (18) months of the date of coverage issuance or is suspended for eighteen (18) months or more, unless an extension is requested per Condition S-1(3) of ACT3. Provided that the coverage recipient requests an extension to the allowable construction period within a reasonable time following the 18-month period, the construction period shall be extended for one additional 18-month period from the date of receipt of the request.

[11 Miss. Admin. Code Pt. 2, Ch. 2.]

ACT 6 (HMAGP - General) Definitions:

- T-1 AIR CONTAMINANT means particulate matter, dust, fumes, gas, mist, smoke, or vapor, or any combination thereof produced by processes other than natural. [11 Miss. Admin. Code Pt. 2, Ch. 1.]
- T-2 AIR EMISSIONS as used in this permit, include both point and fugitive sources of regulated air pollutants from hot mix asphalt facilities, as well as regulated air pollutants generated from any stationary fuel burning operations or other ancillary equipment supporting such facilities. These emissions consist primarily of emissions from the asphalt dryer, but may also include aggregate crushing and liquid asphalt emissions. Fugitive sources include the storage and transfer of aggregate, truck loading, and vehicle traffic. [11 Miss. Admin. Code Pt. 2, Ch. 2.]
- T-3 BAGHOUSE or FABRIC FILTER means an add-on air pollution control system that removes particulate matter (PM) and nonvaporous metals emissions by passing flue gas through filter bags. [11 Miss. Admin. Code Pt. 2, Ch. 1.]
- T-4 BATCH MIX ASPHALT PLANTS are facilities that heat and dry aggregate, then separate the aggregate and mix it with asphalt cement in separate batches. [11 Miss. Admin. Code Pt. 2, Ch. 2., 11 Miss. Admin. Code Pt. 6, Ch. 1.]
- T-5 BEST MANAGEMENT PRACTICES (BMPs) means schedules of activities, prohibitions of practices, maintenance procedures, and other management practices to prevent or reduce the discharge of pollutants to waters of the United States. BMPs also include treatment requirements, operating procedures, and practice to control plant site runoff, spillage or leaks, sludge or waste disposal, or drainage from raw material storage. [11 Miss. Admin. Code Pt. 6, Ch. 1.]
- T-6 BIO-DERIVED FUEL means fuel derived from biological material, different from fossil fuels. Biological material includes, but is not limited to, plant material, vegetable oils and animal fats. [11 Miss. Admin. Code Pt. 2, Ch. 2.]
- T-7 CONTIGUOUS (PROPERTY) LANDOWNER means the owner of land which is adjacent to (touching) another person's property. Land divided by public access roads is considered contiguous. [11 Miss. Admin. Code Pt. 6, Ch. 1.]
- T-8 CONTROL MEASURE as used in this permit, refers to any Best Management Practice or other method used to prevent or reduce the discharge of pollutants to waters of the United States. [11 Miss. Admin. Code Pt. 6, Ch. 1.]
- T-9 DRUM MIX ASPHALT PLANTS are facilities that heat and mix the aggregate with asphalt cement in a rotating drum. [11 Miss. Admin. Code Pt. 2, Ch. 2., 11 Miss. Admin. Code Pt. 6, Ch. 1.]
- T-10 FACILITY OR ACTIVITY means any NPDES "point source" or any other facility or activity (including land or appurtenances thereto) that is subject to regulation under the NPDES program. [11 Miss. Admin. Code Pt. 6, Ch. 1.]

ACT 6 (HMAGP - General) Definitions (continued):

- T-11 GASOLINE DISPENSING FACILITY (GDF) means any stationary facility which dispenses gasoline into the fuel tank of a motor vehicle, motor vehicle engine, nonroad vehicle, or nonroad engine, including a nonroad vehicle or nonroad engine used solely for competition. These facilities include, but are not limited to, facilities that dispense gasoline into on- and off-road, street, or highway motor vehicles, lawn equipment, boats, test engines, landscaping equipment, generators, pumps, and other gasoline-fueled engines and equipment. [40 CFR 63.11132, Subpart CCCCCC]
- T-12 HOT MIX ASPHALT PLANTS are facilities that manufacture asphalt by heating and drying aggregate and mixing it with asphalt cement. A hot mix asphalt plant may be comprised of a combination of the following: dryers; systems for screening, handling, storing, and weighing hot aggregate; systems for loading, transferring, and storing mineral filler; systems for mixing hot mix asphalt; hot oil heaters; storage silos; storage tanks; RAP and rock crushers; and the loading, transfer and storage systems associated with emission control systems. [11 Miss. Admin. Code Pt. 2, Ch. 2., 11 Miss. Admin. Code Pt. 6, Ch. 1.]
- T-13 INITIAL START-UP means the setting into operation of an affected facility (a stationary source of air emissions to which a New Source Performance Standard in 40 CFR Part 60 applies) for any purpose for the first time. [11 Miss. Admin. Code Pt. 2, Ch. 1.]
- T-14 LIGHT COMMERCIAL AREA means an area zoned for commercial use or, in the absence of any local zoning ordinances, an area predominantly used for wholesale and retail trade in goods and services. [11 Miss. Admin. Code Pt. 2, Ch. 2.]
- T-15 MAJOR MODIFICATION means any physical modification or change in the method of operation that results in an increase to the potential asphalt production rate (on an hourly basis) or potential rock or RAP crushing capacity (on an hourly basis), or a modification to expand the footprint of the HMA plant identified in the HMANOI or a previously approved modification. A major modification also includes relocating an HMA plant or RAP crusher to an existing permitted site.
- T-16 MUNICIPAL SEPARATE STORM SEWER SYSTEM (MS4) means a conveyance or system of conveyances (including roads with drainage systems, municipal streets, catch basins, curbs, gutters, ditches, man-made channels, or storm drains): (i) Owned or operated by a State, city, town, borough, county, parish, district, association, or other public body (created by or pursuant to State law) having jurisdiction over disposal of sewage, industrial wastes, storm water, or other wastes, including special districts under State law such as a sewer district, flood control district or drainage district, or similar entity, or an Indian tribe or an authorized Indian tribal organization, or a designated and approved management agency under section 208 of the Clean Water Act (CWA) that discharges to waters of the United States, (ii) Designed or used for collecting or conveying storm water, (iii) Which is not a combined sewer, and (iv) Which is not part of a Publicly Owned Treatment Works (POTW). [11 Miss. Admin. Code Pt. 6, Ch. 1.]
- T-17 OPACITY means the degree to which emissions reduce the transmission of light and obscure the background. [11 Miss. Admin. Code Pt. 2, Ch. 1.]
- T-18 OWNER OR OPERATOR means the owner or operator of any "facility or activity" subject to regulation under the NPDES program. [11 Miss. Admin. Code Pt. 6, Ch. 1.]

ACT 6 (HMAGP - General) Definitions (continued):

- T-19 PERMIT BOARD means the Mississippi Environmental Quality Permit Board established pursuant to Miss. Code Ann. § 49-17-28. [11 Miss. Admin. Code Pt. 2, Ch. 2., 11 Miss. Admin. Code Pt. 6, Ch. 1.]
- T-20 POLLUTANT, for purposes of regulation under the NPDES and CWA, is defined at 40 CFR 122.2. A partial listing from this definition includes: dredged spoil, solid waste, sewage, garbage, sewage sludge, chemical wastes, biological materials, heat, wrecked or discarded equipment, rock, sand, sediment, silt, cellar dirt, and industrial or municipal waste. [11 Miss. Admin. Code Pt. 6, Ch. 1.]
- T-21 RECREATIONAL AREA means a national, state, county, or city park; or an outdoor recreational area, such as a golf course or swimming pool, owned by a city, county, state, or other public agency. [11 Miss. Admin. Code Pt. 2, Ch. 1., 11 Miss. Admin. Code Pt. 2, Ch. 2.]
- T-22 REGULATED AIR EMISSIONS means dust, fumes, mist, smoke, or other particulate matter, vapor, gas, or any combination thereof subject to regulation under the Federal Act, or for which there is a duly adopted state ambient air quality standard. [11 Miss. Admin. Code Pt. 2, Ch. 2.]
- T-23 REGULATED AIR POLLUTANT means any regulated NSR pollutant, any air pollutant subject to a standard promulgated under Section 112 or other requirements established under Section 112 of the Federal Act (i.e., hazardous air pollutants), and any other air pollutant for which there is a duly adopted state ambient air quality standard. [11 Miss. Admin. Code Pt. 2, Ch. 2.]
- T-24 RESIDENTIAL AREA means a group of 20 or more single family dwelling units on contiguous property and having an average density of two or more units per acre, or a group of 40 or more single family dwelling units on contiguous property and having an average density of one or more units per acre, or a subdivision containing at least 20 constructed houses, in which the subdivision plat is recorded in the chancery clerk's office of the appropriate county. [11 Miss. Admin. Code Pt. 2, Ch. 1., 11 Miss. Admin. Code Pt. 2, Ch. 2.]
- T-25 SEVERE PROPERTY DAMAGE means substantial physical damage to property, damage to the treatment facilities which causes them to become inoperable, or substantial and permanent loss of natural resources which can reasonably be expected to occur in the absence of a bypass. Severe property damage does not mean economic loss caused by delays in production. [40 CFR 122.41(m)]
- T-26 SIGNIFICANT MATERIALS includes, but is not limited to: raw materials; fuels; materials such as solvents, detergents, and plastic pellets; finished materials such as metallic products; raw materials used in food processing or production; hazardous substances designated under section 101(14) of CERCLA; any chemical the facility is required to report pursuant to Section 313 of Title III of SARA; fertilizers; pesticides; and waste products such as ashes, slag and sludge that have the potential to be released with storm water discharges. [11 Miss. Admin. Code Pt. 6, Ch. 1.]

ACT 6 (HMAGP - General) Definitions (continued):

- T-27 SIGNIFICANT SPILL OR LEAK is defined by EPA to include releases within a 24-hour period of hazardous substances in excess of reportable quantities under Section 311 of the Clean Water Act and Section 102 of the Comprehensive Environmental Response, Compensation, and Liability Act (CERCLA). Reportable quantities are set amounts of substances in pounds, gallons, or other units and are listed in 40 CFR Part 117 and 40 CFR Part 302. Releases are defined to include any spilling, leaking, pumping, pouring, emitting, emptying, discharging, injecting, escaping, leaching, dumping, or disposing into the environment. [11 Miss. Admin. Code Pt. 6, Ch. 1.]
- T-28 STORM WATER means rainfall runoff, snowmelt runoff, and surface runoff. [11 Miss. Admin. Code Pt. 6, Ch. 1.]
- T-29 STORM WATER DISCHARGE ASSOCIATED WITH INDUSTRIAL ACTIVITY means the discharge from any conveyance which is used for collecting and conveying storm water and which has come in contact with material handling equipment or activities, raw materials, intermediate products, final products, waste materials, by-products or industrial machinery. The categories considered to be engaging in "industrial activity" are in 40 CFR 122.26(b)(14)(i - xi). [11 Miss. Admin. Code Pt. 6, Ch. 1.]
- T-30 STORM WATER POLLUTION PREVENTION PLAN "SWPPP" means a plan that includes site map(s), an identification of industrial activities that could cause pollutants in the storm water, and a description of measures or practices to minimize and control these pollutants. [11 Miss. Admin. Code Pt. 6, Ch. 1.]
- T-31 SUBMITTED means the document is postmarked on or before the applicable deadline, except as otherwise specified. [11 Miss. Admin. Code Pt. 6, Ch. 1.]
- T-32 TITLE V MAJOR SOURCE emits or has the potential to emit 100 tons per year (tpy) or more of any regulated air pollutant subject to regulation or 10 tpy or more of any hazardous air pollutant or 25 tpy or more of any combination of such hazardous air pollutants. Hazardous air pollutants are those pollutants listed pursuant to Section 112(b) of the Clean Air Act. [11 Miss. Admin. Code Pt. 2, Ch. 6.]
- T-33 TOTAL MAXIMUM DAILY LOAD (TMDL) means the maximum daily amount of a pollutant that can enter a water body so that the water body will meet and continue to meet state water quality standards. [11 Miss. Admin. Code Pt. 6, Ch. 1.]
- T-34 UPSET means an exceptional incident in which there is unintentional and temporary noncompliance with technology based permit effluent limitations because of factors beyond the reasonable control of the permittee. An upset does not include noncompliance to the extent caused by operational error, improperly designed treatment facilities, inadequate treatment facilities, lack of preventive maintenance, or careless or improper operation. [11 Miss. Admin. Code Pt. 6, Ch. 1.]

ACT 6 (HMAGP - General) Definitions (continued):

T-35 WATERS OF THE STATE means all waters within the jurisdiction of this State, including all streams, lakes, ponds, wetlands, impounding reservoirs, marshes, watercourses, waterways, wells, springs, irrigation systems, drainage systems, and all other bodies or accumulations of water, surface and underground, natural or artificial, situated wholly or partly within or bordering upon the State, and such coastal waters as are within the jurisdiction of the State, except lakes, ponds, or other surface waters which are wholly landlocked and privately owned, and which are not regulated under the Federal Clean Water Act (33 U.S.C. Section 1251 et seq.). [11 Miss. Admin. Code Pt. 6, Ch. 1.]

APPENDIX: List of Permitted Hot Mix Asphalt Facilities in Mississippi

Agency Interest No.	HMAGP Number	Facility Name	Physical Address	City	State	Zip Code	Contact Name		Contact Phone
							First	Last	
4995	MSR700109	A J Construction, Gallatin Plant	1090 McDowell Road	Jackson	MS	39204	John	Harreld	(601) 540-5731
28	MSR700025	ADCAMP Inc	1353 Flowood Drive	Flowood	MS	39232	Ralph	Barnes	(601) 939-4493
2521	MSR700099	APAC MISSISSIPPI INC, Bailey Road Asphalt Plant	2050 Bailey Road	Georgetown	MS	39078	Brian	Moore	(601) 376-4000
9170	MSR700105	APAC MISSISSIPPI INC, Booneville Plant	1801 Chambers Drive	Booneville	MS	38829	Brian	Moore	(601) 376-4000
15782	MSR700030	APAC MISSISSIPPI INC, Canton	117 Tyler Drive	Canton	MS	39046	Brian	Moore	(601) 376-4000
201	MSR700043	APAC MISSISSIPPI INC, Cloverhill Mine	100 State Park Road	Natchez	MS	39120	Brian	Moore	(601) 376-4000
10272	MSR700007	APAC MISSISSIPPI INC, Columbus Asphalt Plant	462 Lake Norris Road	Columbus	MS	39701	Brian	Moore	(601) 376-4000
81882	MSR700111	APAC MISSISSIPPI INC, Durant Asphalt Plant	Industrial Park Road	Durant	MS	39063	Brian	Moore	(601) 376-4000
16748	MSR700044	APAC MISSISSIPPI INC, Glen	2700 Highway 72 East	Glen	MS	38846	Brian	Moore	(601) 376-4000
7573	MSR700052	APAC MISSISSIPPI INC, Greenville Asphalt Plant	2559 Harbor Front Road	Greenville	MS	38701	Brian	Moore	(601) 376-4000
55732	MSR700097	APAC MISSISSIPPI INC, Greenwood Asphalt Plant	Cypress Avenue	Greenwood	MS	39830	Brian	Moore	(601) 376-4000
10987	MSR700027	APAC MISSISSIPPI INC, Guntown Asphalt Plant	331 Messner	Guntown	MS	38849	Brian	Moore	(601) 376-4000
8102	MSR700074	APAC MISSISSIPPI INC, Hamilton Highway 45, Scribner Pit	40108 Flower Farm Road	Hamilton	MS	39746	Brian	Moore	(601) 376-4000
1504	MSR700011	APAC MISSISSIPPI INC, Meridian Interchange Road	4412 Interchange Road	Meridian	MS	39305	Brian	Moore	(601) 376-4000
18749	MSR700066	APAC MISSISSIPPI INC, Meridian Plant	Sellers Drive	Meridian	MS	39301	Brian	Moore	(601) 376-4000
987	MSR700091	APAC MISSISSIPPI INC, Meter Road	2902 Meter Road	Jackson	MS	39204	Brian	Moore	(601) 376-4000
3686	MSR700102	APAC MISSISSIPPI INC, Morton Asphalt Plant	2142 Highway 80 West	Morton	MS	39117	Brian	Moore	(601) 376-4000
1450	MSR700050	APAC MISSISSIPPI INC, Mount Olive Asphalt Plant	98 Pearce Road	Mount Olive	MS	39119	Brian	Moore	(601) 376-4000

Agency Interest No.	HMAGP Number	Facility Name	Physical Address	City	State	Zip Code	Contact Name		Contact Phone
							First	Last	
1386	MSR700047	APAC MISSISSIPPI INC, New Albany Plant	110 Gap Drive	New Albany	MS	38663	Brian	Moore	(601) 376-4000
72878	MSR700108	APAC MISSISSIPPI INC, Shannon Plant	5552 Highway 145	Shannon	MS	38868	Brian	Moore	(601) 376-4000
23169	MSR700078	APAC MISSISSIPPI INC, Starkville Asphalt Plant	Highway 82	Starkville	MS	39759	Brian	Moore	(601) 376-4000
2235	MSR700063	APAC MISSISSIPPI INC, Tupelo Asphalt Plant	459 North Eason Boulevard	Tupelo	MS	38802	Brian	Moore	(601) 376-4000
9099	MSR700012	APAC MISSISSIPPI INC, Vicksburg Rifle Range Road	4441 Rifle Range Road	Vicksburg	MS	39180	Brian	Moore	(601) 376-4000
64094	MSR700104	APAC MISSISSIPPI INC, Wynndale Asphalt Plant	I-55 Frontage Road	Byram	MS	39272	Brian	Moore	(601) 376-4000
16650	MSR700041	APAC MISSISSIPPI INC, Yazoo City Asphalt	Highway 3	Yazoo City	MS	39194	Brian	Moore	(601) 376-4000
18951	MSR700070	Asphalt Specialists Plant Number One	Highway 51	Grenada	MS	38901	Robert	Staten	(662) 226-6097
11744	MSR700056	Dickerson and Bowen Inc, Brookhaven Asphalt Plant Number 5	983 Old Highway 51 NE	Brookhaven	MS	39601	Lester	Williams	(601) 833-4291
7185	MSR700022	Dickerson and Bowen Inc, Carthage Plant	Highway 16 East	Carthage	MS	39051	Lester	Williams	(601) 833-4291
15674	MSR700029	Dickerson and Bowen Plant Number 6	2642 Gallatin Street	Jackson	MS	39204	Lester	Williams	(601) 833-4291
55262	MSR700094	Dickerson and Bowen Inc, McComb Asphalt Plant #2	Highway 98 East	McComb	MS	39648	Lester	Williams	(601) 833-4291
10696	MSR700009	Dunn Roadbuilders LLC, Columbia Plant	Highway 98 East	Columbia	MS	39429	Rick	Croy	(601) 649-4111
1621	MSR700051	Dunn Roadbuilders LLC, Laurel Plant	South Laurel Industrial Park	Laurel	MS	39441	Rick	Croy	(601) 649-4111
2635	MSR700061	Dunn Roadbuilders LLC, Petal Facility	153 Chevis Lee Road	Petal	MS	39465	Rick	Croy	(601) 649-4111
800	MSR700013	Falcon Contracting Company Inc, Houston Asphalt Plant	400 Industrial Park Road	Houston	MS	38851	Robert Neal	Coker	(662) 327-2053
6278	MSR700038	Huey P Stockstill LLC, Gautier Plant	2701 Old Spanish Trail	Gautier	MS	39553	Stephen	Niehaus	(228) 497-3226
12798	MSR700002	Huey Stockstill Inc	10130 Goldin Lane	Gulfport	MS	39503	Frank	Ford	(601) 798-2981

Agency Interest No.	HMAPG Number	Facility Name	Physical Address	City	State	Zip Code	Contact Name		Contact Phone
							First	Last	
911	MSR700098	Huey Stockstill Inc, Picayune Ready Mix and Asphalt Plant	815 North Beech Street	Picayune	MS	39466	Frank	Ford	(601) 798-2981
12878	MSR700005	Land Shaper Asphalt Plant Inc	14292-B Creosote Road	Gulfport	MS	39503	Robert	Parker	(228) 863-8996
8329	MSR700072	Lehman Roberts Company, Plant Number 7	1775 Farrish Gravel Road	Batesville	MS	38602	Alan	Parks	(901) 774-7874
10530	MSR700028	Lehman Roberts Company, Plant Number 10	161 Stonewall Road	Byhalia	MS	38611	Alan	Parks	(901) 774-7874
5648	MSR700036	Lehman Roberts Company, Plant Number 6	Highway 51 South	Hernando	MS	38632	Alan	Parks	(901) 774-7874
12879	MSR700006	Lehman Roberts Company, Plant Number 11	Old Highway 7 North	Oxford	MS	38655	Alan	Parks	(901) 774-7874
22813	MSR700077	Lehman Roberts Company, Plant Number 12	Highway 51 South	Senatobia	MS	38668	Alan	Parks	(901) 774-7874
15904	MSR700032	Lehman Roberts, Plant 1	Highway 82, East of Interstate 55	Winona	MS	38967	Alan	Parks	(901) 774-7874
56162	MSR700101	Mallette Brothers Construction Company, Lucedale Asphalt Plant #2	County Industrial Park Road	Lucedale	MS	39452	Frank	Mallette	(228) 497-2523
16862	MSR700046	Pandle Inc, Asphalt Paving Company	2401 Petit Bois Street	Pascagoula	MS	39581	Walter	Randle	(228) 762-3300
5635	MSR700096	Southeastern Concrete Company Inc, Plant Number 4	2611 Lakeview Road	Hattiesburg	MS	39401	Doug	Lambeth	(601) 544-7000
58185	MSR700103	Superior Asphalt Inc, Panola County Plant Number One	Buckhorn Road	Batesville	MS	38606	Hamp	Sterling	(601) 376-3000
20075	MSR700075	Superior Asphalt Inc, Noxubee County Plant Number 2	Highway 45 South	Brooksville	MS	39739	Hamp	Sterling	(601) 376-3000
54765	MSR700093	Superior Asphalt Inc, Scott County Plant Number One	1540 Highway 35 South	Forest	MS	39074	Hamp	Sterling	(601) 376-3000
36123	MSR700081	Superior Asphalt Inc, Gulfport	Goldin Lane	Gulfport	MS	39503	Hamp	Sterling	(601) 376-3000
17578	MSR700058	Superior Asphalt Inc, Hazlehurst Plant, Copiah County Number 1	Old Decell Lane	Hazlehurst	MS	39083	Hamp	Sterling	(601) 376-3000
19029	MSR700071	Superior Asphalt Inc, Clay Street Plant, Hinds County Number 2	111 Clay Street	Jackson	MS	39213	Hamp	Sterling	(601) 376-3000

Agency Interest No.	HMAGP Number	Facility Name	Physical Address	City	State	Zip Code	Contact Name		Contact Phone
							First	Last	
972	MSR700039	Superior Asphalt Inc, Jackson	6000 Interstate 55 South	Jackson	MS	39212	Hamp	Sterling	(601) 376-3000
11005	MSR700034	Superior Asphalt Inc, Louisville	Highway 25 Bypass	Louisville	MS	39339	Hamp	Sterling	(601) 376-3000
1151	MSR700035	Superior Asphalt Inc, Philadelphia	Highway 15 By-Pass	Philadelphia	MS	39350	Hamp	Sterling	(601) 376-3000
53368	MSR700090	Superior Asphalt Inc, Holmes County Plant Number Two	4397 Highway 17	Pickens	MS	39146	Hamp	Sterling	(601) 376-3000
1419	MSR700016	Warren Paving Inc, Hattiesburg Plant	562 Elks Lake Road	Hattiesburg	MS	39403	Tony	Broome	(601) 544-7811
37397	MSR700084	Warren Paving Inc, Moss Point Plant	Highway 63	Moss Point	MS	39562	Tony	Broome	(601) 544-7811
18756	MSR700068	Whitehead Construction Asphalt Plant	Highway 90 and Industrial Road	Pascagoula	MS	39567	Larry	Whitehead	(228) 762-6951

ATTACHMENT C

HOT MIX ASPHALT GENERAL PERMIT PUBLIC NOTICE

Hot Mix Asphalt General Permit Public Notice
Mississippi Environmental Quality Permit Board
P. O. Box 2261 | Jackson, MS 39225
515 East Amite St. | Jackson, MS 39201
Telephone No. (601) 961-5171

Public Notice Start Date: Monday, April 10, 2023

AJ Construction, Inc. - Hazlehurst Plant located off Highway 28 in Hazlehurst, Copiah County, Mississippi, (601) 540-5731 has applied to the Mississippi Department of Environmental Quality (MDEQ) for coverage under MDEQ's Hot Mix Asphalt General Permit to construct and operate a Hot Mix Asphalt facility.

The Hot Mix Asphalt General Permit has been developed to ensure compliance with all State and Federal regulations. Facilities granted coverage under this permit and adhering to the conditions contained therein should operate within State and Federal environmental laws and standards concerning the construction and operation of air emissions equipment and the discharge of storm water associated with industrial activities.

The proposed project consists of construction and operation of a Hot Mix Asphalt facility. Under the General Permit, all Hot Mix Asphalt facilities must control emissions of particulate matter from the dryer and related silos and comply with other limitations regarding asphalt production, fuels combusted, and rock/RAP crusher operation. With these limitations, potential emissions will be below the Prevention of Significant Deterioration major source thresholds specified in the Mississippi Regulations for the Prevention of Significant Deterioration of Air Quality, 11 Miss. Admin. Code Pt. 2, Ch. 5. Potential emissions will also be below the Air Title V major source thresholds as specified in 11 Miss. Admin. Code Pt. 2, Ch. 6.

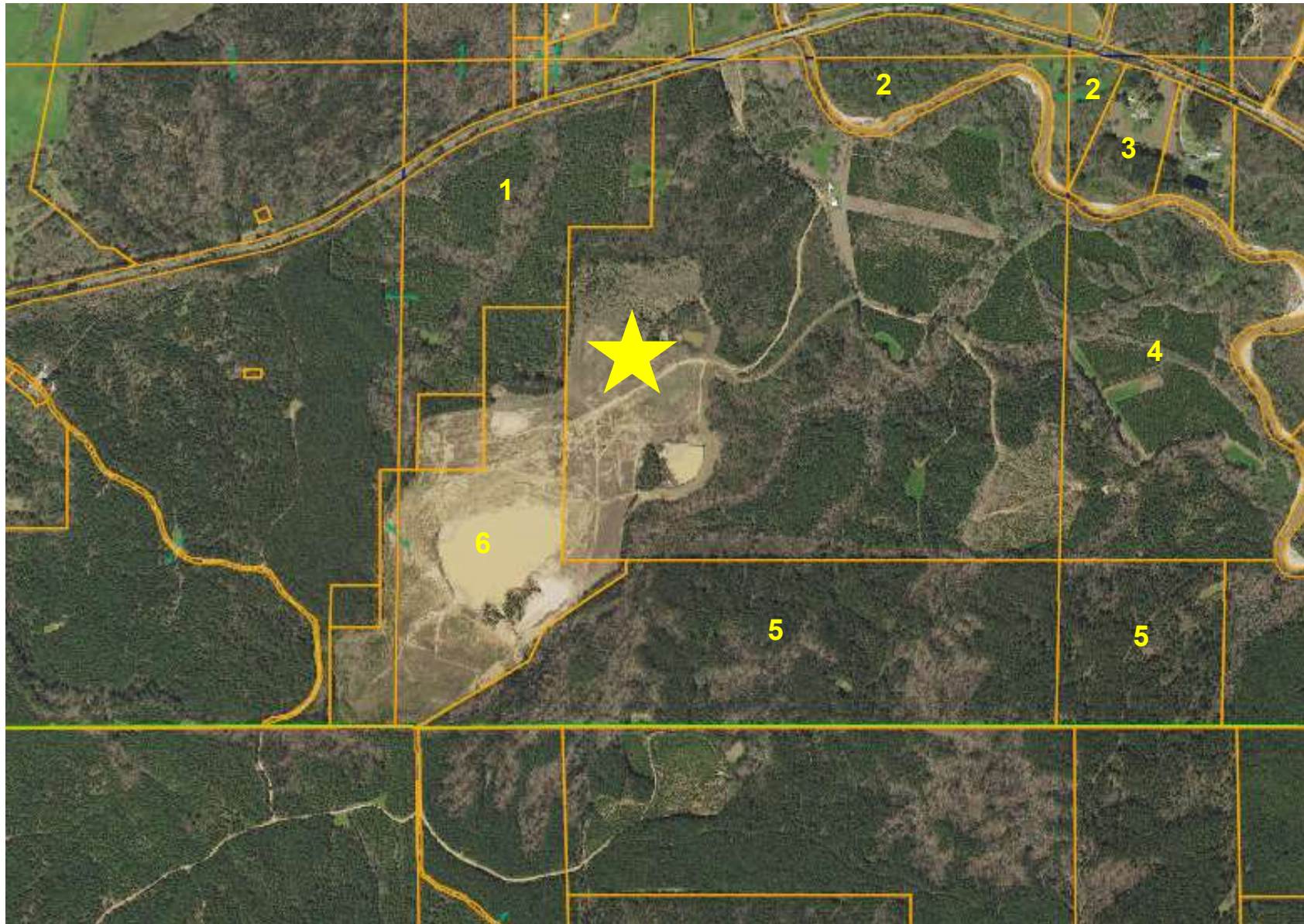
Persons wishing to comment upon or object to the proposed request for coverage are invited to submit comments in writing to the **Air II Branch Chief, Environmental Permits Division** at the Permit Board's address shown above or via email at www.mdeq.ms.gov/whitlock-jaricus no later than 30 days from the public notice start date. The deadline for comment shall be extending to the following calendar day should the 30-day period end on a weekend or State holiday. All comments received or postmarked by this date will be considered in the determination regarding coverage approval. After receipt of public comments and thorough consideration of all comments, MDEQ will formulate its recommendations regarding coverage approval.

Additional details about the proposed project are available by writing or calling the **Air II Branch Manager, Environmental Permits Division** at the above Permit Board address and telephone number. A copy of the Notice of Intent and public notice are also available on the MDEQ's website at: <https://opcgis.deq.state.ms.us/ensearchonline/recently-received-general-permit-noi.aspx>. A copy of the Hot Mix Asphalt General Permit is available at www.mdeq.ms.gov/hmagp. This information is also available for review during normal business hours at the office of the MDEQ at the Permit Board address shown above. Please bring the foregoing to the attention of persons whom you know will be interested.

ATTACHMENT D

CONTIGUOUS LANDOWNER NOTIFICATIONS

**AJ Construction, Inc. – Hazlehurst Plant
Hot Mix Asphalt Notice of Intent
Contiguous Landowner Notification Map**



**AJ Construction, Inc. – Hazlehurst Plant
Hot Mix Asphalt Notice of Intent
Contiguous Landowner Notification Map**

Map ID	Owner Information
	Proposed location for asphalt plant
1	Tamarack Timber Company, Inc. 31 Inverness Center Parkway, Suite 200 Birmingham, AL 35242 Certified Mail No. 7022 3330 0000 1228 5198
2	Melinda Bryant P.O. Box 305 Hazlehurst, MS 39083 Certified Mail No. 7022 3330 0000 1228 5181
3	Fannie Ruth Woods 37028 Highway 28 Crystal Springs, MS 39059 Certified Mail No. 7022 3330 0000 1228 5174
4	George Ramsey Marx, Jr. and P. Denton 1139 Highway 472 Hazlehurst, MS 39083 Certified Mail No. 7022 3330 0000 1228 5167
5	Hammett Development Partnership LP P.O. Drawer 209 Lexington, MS 39095 Certified Mail No. 7022 3330 0000 1228 5150
6	Green Brothers Gravel Co., Inc. P.O. Box 1271 Madison, MS 39130 Certified Mail No. 7022 3330 0000 1228 5143



Contiguous Landowner Notification of a Hot Mix Asphalt Facility

(See ACT 2, Condition S-2 of General Permit for Notification Requirements)



Certified Mail No.: 7022 3330 0000 1228 5174

Date mailed: _____

Company Name: AJ Construction, Inc.
(as registered with the MS Secretary of State)

Coverage No.: MSR70 _____
(if currently permitted facility)

located at Highway 28 in the Hammett Gravel Pit, Hazlehurst, Copiah County, MS
Physical Street Address City County

is proposing to:

- ☒ construct and operate a new hot mix asphalt facility.
- ☐ modify the existing hot mix asphalt facility resulting in an increase to the potential hourly asphalt production rate or rock/RAP crushing rate.
- ☐ expand the footprint of an existing hot mix asphalt facility.
- ☐ relocate a hot mix asphalt plant or rock/RAP crusher to the existing permitted site.

This letter is to provide you notification of the proposed project and to provide you an opportunity to comment regarding environmental concerns about the project. The Mississippi Department of Environmental Quality (MDEQ) only has legal authority to consider environmental issues specified in the applicable laws and regulations. MDEQ does not have legal authority to consider matters outside of its jurisdiction; thus, comments regarding zoning, noise or traffic impacts, or other non-environmental related comments should be directed to the local zoning and planning authorities.

If you do not have environmental comments regarding the proposed project, then no response is necessary, and the permitting process will continue. If you have environmental-related comments regarding the proposed project, please notify MDEQ in writing within 30 days from the postmarked date of this notification or by the end of the 30-day public comment period, whichever is later. The online public notice of the project can be found at the following link: <https://opcgis.deq.state.ms.us/ensearchonline/recently-received-general-permit-noi.aspx>. When making written comments, please reference the Company Name and location using the information above and provide your contact phone number and address. If you would like to discuss concerns that you have regarding this project, please feel free to contact MDEQ at (601) 961-5171. Comments are to be mailed to the following address:

Chief, Environmental Permits Division
Mississippi Department of Environmental Quality
PO Box 2261
Jackson, MS 39225-2261



Contiguous Landowner Notification of a Hot Mix Asphalt Facility

(See ACT 2, Condition S-2 of General Permit for Notification Requirements)



Certified Mail No.: 7022 3330 0000 1228 5167

Date mailed: _____

Company Name: AJ Construction, Inc.
(as registered with the MS Secretary of State)

Coverage No.: MSR70 _____
(if currently permitted facility)

located at Highway 28 in the Hammett Gravel Pit, Hazlehurst, Copiah County, MS
Physical Street Address City County

is proposing to:

- ☒ construct and operate a new hot mix asphalt facility.
- ☐ modify the existing hot mix asphalt facility resulting in an increase to the potential hourly asphalt production rate or rock/RAP crushing rate.
- ☐ expand the footprint of an existing hot mix asphalt facility.
- ☐ relocate a hot mix asphalt plant or rock/RAP crusher to the existing permitted site.

This letter is to provide you notification of the proposed project and to provide you an opportunity to comment regarding environmental concerns about the project. The Mississippi Department of Environmental Quality (MDEQ) only has legal authority to consider environmental issues specified in the applicable laws and regulations. MDEQ does not have legal authority to consider matters outside of its jurisdiction; thus, comments regarding zoning, noise or traffic impacts, or other non-environmental related comments should be directed to the local zoning and planning authorities.

If you do not have environmental comments regarding the proposed project, then no response is necessary, and the permitting process will continue. If you have environmental-related comments regarding the proposed project, please notify MDEQ in writing within 30 days from the postmarked date of this notification or by the end of the 30-day public comment period, whichever is later. The online public notice of the project can be found at the following link: <https://opcgis.deq.state.ms.us/ensearchonline/recently-received-general-permit-noi.aspx>. When making written comments, please reference the Company Name and location using the information above and provide your contact phone number and address. If you would like to discuss concerns that you have regarding this project, please feel free to contact MDEQ at (601) 961-5171. Comments are to be mailed to the following address:

Chief, Environmental Permits Division
Mississippi Department of Environmental Quality
PO Box 2261
Jackson, MS 39225-2261



Contiguous Landowner Notification of a Hot Mix Asphalt Facility

(See ACT 2, Condition S-2 of General Permit for Notification Requirements)



Certified Mail No.: 7022 3330 0000 1228 5143

Date mailed: _____

Company Name: AJ Construction, Inc.
(as registered with the MS Secretary of State)

Coverage No.: MSR70 _____
(if currently permitted facility)

located at Highway 28 in the Hammett Gravel Pit, Hazlehurst, Copiah County, MS
Physical Street Address City County

is proposing to:

- ☒ construct and operate a new hot mix asphalt facility.
- ☐ modify the existing hot mix asphalt facility resulting in an increase to the potential hourly asphalt production rate or rock/RAP crushing rate.
- ☐ expand the footprint of an existing hot mix asphalt facility.
- ☐ relocate a hot mix asphalt plant or rock/RAP crusher to the existing permitted site.

This letter is to provide you notification of the proposed project and to provide you an opportunity to comment regarding environmental concerns about the project. The Mississippi Department of Environmental Quality (MDEQ) only has legal authority to consider environmental issues specified in the applicable laws and regulations. MDEQ does not have legal authority to consider matters outside of its jurisdiction; thus, comments regarding zoning, noise or traffic impacts, or other non-environmental related comments should be directed to the local zoning and planning authorities.

If you do not have environmental comments regarding the proposed project, then no response is necessary, and the permitting process will continue. If you have environmental-related comments regarding the proposed project, please notify MDEQ in writing within 30 days from the postmarked date of this notification or by the end of the 30-day public comment period, whichever is later. The online public notice of the project can be found at the following link: <https://opcgis.deq.state.ms.us/ensearchonline/recently-received-general-permit-noi.aspx>. When making written comments, please reference the Company Name and location using the information above and provide your contact phone number and address. If you would like to discuss concerns that you have regarding this project, please feel free to contact MDEQ at (601) 961-5171. Comments are to be mailed to the following address:

Chief, Environmental Permits Division
Mississippi Department of Environmental Quality
PO Box 2261
Jackson, MS 39225-2261



Contiguous Landowner Notification of a Hot Mix Asphalt Facility

(See ACT 2, Condition S-2 of General Permit for Notification Requirements)



Certified Mail No.: 7022 3330 0000 1228 5150

Date mailed: _____

Company Name: AJ Construction, Inc.
(as registered with the MS Secretary of State)

Coverage No.: MSR70 _____
(if currently permitted facility)

located at Highway 28 in the Hammett Gravel Pit, Hazlehurst, Copiah County, MS
Physical Street Address City County

is proposing to:

- ☒ construct and operate a new hot mix asphalt facility.
- ☐ modify the existing hot mix asphalt facility resulting in an increase to the potential hourly asphalt production rate or rock/RAP crushing rate.
- ☐ expand the footprint of an existing hot mix asphalt facility.
- ☐ relocate a hot mix asphalt plant or rock/RAP crusher to the existing permitted site.

This letter is to provide you notification of the proposed project and to provide you an opportunity to comment regarding environmental concerns about the project. The Mississippi Department of Environmental Quality (MDEQ) only has legal authority to consider environmental issues specified in the applicable laws and regulations. MDEQ does not have legal authority to consider matters outside of its jurisdiction; thus, comments regarding zoning, noise or traffic impacts, or other non-environmental related comments should be directed to the local zoning and planning authorities.

If you do not have environmental comments regarding the proposed project, then no response is necessary, and the permitting process will continue. If you have environmental-related comments regarding the proposed project, please notify MDEQ in writing within 30 days from the postmarked date of this notification or by the end of the 30-day public comment period, whichever is later. The online public notice of the project can be found at the following link: <https://opcgis.deq.state.ms.us/ensearchonline/recently-received-general-permit-noi.aspx>. When making written comments, please reference the Company Name and location using the information above and provide your contact phone number and address. If you would like to discuss concerns that you have regarding this project, please feel free to contact MDEQ at (601) 961-5171. Comments are to be mailed to the following address:

Chief, Environmental Permits Division
Mississippi Department of Environmental Quality
PO Box 2261
Jackson, MS 39225-2261



Contiguous Landowner Notification of a Hot Mix Asphalt Facility

(See ACT 2, Condition S-2 of General Permit for Notification Requirements)



Certified Mail No.: 7022 3330 0000 1228 5181

Date mailed: _____

Company Name: AJ Construction, Inc.
(as registered with the MS Secretary of State)

Coverage No.: MSR70 _____
(if currently permitted facility)

located at Highway 28 in the Hammett Gravel Pit, Hazlehurst, Copiah County, MS
Physical Street Address City County

is proposing to:

- ☒ construct and operate a new hot mix asphalt facility.
- ☐ modify the existing hot mix asphalt facility resulting in an increase to the potential hourly asphalt production rate or rock/RAP crushing rate.
- ☐ expand the footprint of an existing hot mix asphalt facility.
- ☐ relocate a hot mix asphalt plant or rock/RAP crusher to the existing permitted site.

This letter is to provide you notification of the proposed project and to provide you an opportunity to comment regarding environmental concerns about the project. The Mississippi Department of Environmental Quality (MDEQ) only has legal authority to consider environmental issues specified in the applicable laws and regulations. MDEQ does not have legal authority to consider matters outside of its jurisdiction; thus, comments regarding zoning, noise or traffic impacts, or other non-environmental related comments should be directed to the local zoning and planning authorities.

If you do not have environmental comments regarding the proposed project, then no response is necessary, and the permitting process will continue. If you have environmental-related comments regarding the proposed project, please notify MDEQ in writing within 30 days from the postmarked date of this notification or by the end of the 30-day public comment period, whichever is later. The online public notice of the project can be found at the following link: <https://opcgis.deq.state.ms.us/ensearchonline/recently-received-general-permit-noi.aspx>. When making written comments, please reference the Company Name and location using the information above and provide your contact phone number and address. If you would like to discuss concerns that you have regarding this project, please feel free to contact MDEQ at (601) 961-5171. Comments are to be mailed to the following address:

Chief, Environmental Permits Division
Mississippi Department of Environmental Quality
PO Box 2261
Jackson, MS 39225-2261



Contiguous Landowner Notification of a Hot Mix Asphalt Facility

(See ACT 2, Condition S-2 of General Permit for Notification Requirements)



Certified Mail No.: 7022 3330 0000 1228 5198

Date mailed: _____

Company Name: AJ Construction, Inc.
(as registered with the MS Secretary of State)

Coverage No.: MSR70 _____
(if currently permitted facility)

located at Highway 28 in the Hammett Gravel Pit, Hazlehurst, Copiah County, MS
Physical Street Address City County

is proposing to:

- ☒ construct and operate a new hot mix asphalt facility.
- ☐ modify the existing hot mix asphalt facility resulting in an increase to the potential hourly asphalt production rate or rock/RAP crushing rate.
- ☐ expand the footprint of an existing hot mix asphalt facility.
- ☐ relocate a hot mix asphalt plant or rock/RAP crusher to the existing permitted site.

This letter is to provide you notification of the proposed project and to provide you an opportunity to comment regarding environmental concerns about the project. The Mississippi Department of Environmental Quality (MDEQ) only has legal authority to consider environmental issues specified in the applicable laws and regulations. MDEQ does not have legal authority to consider matters outside of its jurisdiction; thus, comments regarding zoning, noise or traffic impacts, or other non-environmental related comments should be directed to the local zoning and planning authorities.

If you do not have environmental comments regarding the proposed project, then no response is necessary, and the permitting process will continue. If you have environmental-related comments regarding the proposed project, please notify MDEQ in writing within 30 days from the postmarked date of this notification or by the end of the 30-day public comment period, whichever is later. The online public notice of the project can be found at the following link: <https://opcgis.deq.state.ms.us/ensearchonline/recently-received-general-permit-noi.aspx>. When making written comments, please reference the Company Name and location using the information above and provide your contact phone number and address. If you would like to discuss concerns that you have regarding this project, please feel free to contact MDEQ at (601) 961-5171. Comments are to be mailed to the following address:

Chief, Environmental Permits Division
Mississippi Department of Environmental Quality
PO Box 2261
Jackson, MS 39225-2261

ATTACHMENT E

CERTIFICATE OF GOOD STANDING



Michael Watson

SECRETARY OF STATE

This is not an official certificate of good standing.

Name History

Name	Name Type
A J Construction, Inc.	Legal

Business Information

Business Type:	Profit Corporation
Business ID:	878450
Status:	Good Standing
Effective Date:	09/22/2005
State of Incorporation:	Mississippi
Principal Office Address:	233 Fieldstone Ln Madison, MS 39110

Registered Agent

Name
Matthews, R Ellen 1220 Highway 51 North Madison, MS 39110

Officers & Directors

Name	Title
Annette Harreld 140 Arrington Drive Madison, MS 39110	Incorporator
John Harreld 140 Arrington Drive Madison, MS 39110	Incorporator
John Cowan Harreld Jr 233 Fieldstone Ln Madison, MS 39110	President, Secretary, Treasurer