

# **Stormwater Pollution Prevention Plan**

**WEST RANKIN INDUSTRIAL PARK CLEARING & GRUBBING**  
**RANKIN FIRST ECONOMIC DEVELOPMENT AUTHORITY**  
Pearl, Mississippi



February 2026

Under Mississippi's  
**Large Construction Stormwater General NPDES Permit**

## **TABLE OF CONTENTS**

---

<b>1.0</b>	<b>INTRODUCTION.....</b>	<b>1</b>
<b>2.0</b>	<b>PROJECT BACKGROUND/SITE DESCRIPTION.....</b>	<b>2</b>
<b>3.0</b>	<b>PROPOSED SITE IMPROVEMENTS .....</b>	<b>3</b>
<b>4.0</b>	<b>PROJECT SCHEDULE.....</b>	<b>4</b>
<b>5.0</b>	<b>POTENTIAL SOURCES OF STORMWATER POLLUTION.....</b>	<b>5</b>
<b>6.0</b>	<b>BEST MANAGEMENT PRACTICES .....</b>	<b>6</b>
6.1	General .....	6
6.2	Non-Structural Practices .....	7
6.3	Structural Practices.....	8
6.4	Vegetative Practices .....	9
<b>7.0</b>	<b>IMPLEMENTATION .....</b>	<b>10</b>
<b>8.0</b>	<b>HOUSEKEEPING AND TRAINING.....</b>	<b>11</b>
8.1	Good Housekeeping .....	11
8.2	Employee Training .....	11
<b>9.0</b>	<b>INSPECTION PROCEDURES .....</b>	<b>12</b>
<b>10.0</b>	<b>MAINTENANCE PROCEDURES .....</b>	<b>13</b>
<b>11.0</b>	<b>NON-NUMERIC LIMITATIONS .....</b>	<b>14</b>
<b>12.0</b>	<b>REPORTING AND RECORDKEEPING .....</b>	<b>15</b>
12.1	General .....	15
12.2	Non-Compliance Reporting .....	15

## **FIGURES**

Site Location  
Site Plan Sheets  
BMP Detail Sheets

## **ATTACHMENTS**

Attachment A	Major Modification Form
Attachment B	Prime Contractor Certification
Attachment C	General Permit Conditions
Attachment D	Weekly Inspection Forms
Attachment E	Request for Termination of Coverage

## **1.0 INTRODUCTION**

---

The following Stormwater Pollution Prevention Plan (SWPPP) has been prepared to assist in satisfying the conditions of the *Mississippi State of Mississippi Water Pollution Control Stormwater Large Construction General Permit*, and to provide a written plan for managing stormwater runoff during land disturbance activities associated with the proposed clearing and grubbing project located in the West Rankin Industrial Park, Pearl, Rankin County, Mississippi. As required by the General Permit, a Large Construction Notice of Intent (LCNOI) has been completed and a copy of the signed LCNOI is included as **Attachment A**.

This SWPPP was prepared in accordance with the requirements set forth in the General Permit and federal regulations under the National Pollutant Discharge Elimination System (NPDES) Program. In general, this SWPPP describes the project background and physical setting of site (Section 2.0); outlines proposed construction activities at the site (Section 3.0); sets forth the proposed schedule for site activities (Section 4.0); identifies potential pollutant sources which may reasonably be expected to affect the quality of stormwater discharges associated with land disturbance activities (Section 5.0); describes control measures or “best management practices” (BMPs) which will be implemented to reduce potential pollutants in stormwater discharges (Section 6.0); describes the schedule for implementation (Section 7.0); measures for housekeeping and training (Section 8.0); schedule and procedures for inspection (Section 9.0); and maintenance procedures (Section 10.0); identifies discharge limitations (Section 11.0); and identifies reporting and recordkeeping procedures to be implemented (Section 12.0). A copy of this SWPPP shall remain at the permitted site throughout the activities covered under this permit.

## **2.0 PROJECT BACKGROUND/SITE DESCRIPTION**

---

The project is located within the municipal boundary of Pearl, Rankin County, Mississippi. More specifically, the proposed site is located within portions of Sections 21, 22, 27 & 28, Township 5 North, Range 2 East of the *Jackson SE, Mississippi* and *Whitfield, Mississippi* Quadrangles. A site location map using portions of the USGS 7.5 minute topographic maps is enclosed in the Figures Appendix.

The project is clearing approximately 47 acres of forest in order to establish open field with a ground cover of perennial grasses and herbaceous vegetation. The project site consists of a wooded lot in the existing industrial park. The surrounding areas consist of a mix of developed and undeveloped lands, and include transportation corridors, industrial developments, residential areas, and undeveloped land. Existing elevations across the site range from approximately 350 to 310 ft. Mean Sea Level (MSL). The site is located in the Pearl River Watershed, and runoff from the site drains to unnamed tributaries of Richland Creek, thence Pearl River. Richland Creek is not listed on the most recent *303(d) List of Impaired Waterbodies* but does have an approved Total Maximum Daily Load (TMDL) for nutrients and organic enrichment/low dissolved oxygen. Pearl River in Rankin County has multiple established TMDLs including those for: 1) nutrients (nitrogen and phosphorus), 2) legacy pesticides (DDT and Toxaphene), 3) Pathogens, and 4) Sediment. The Pearl River Watershed TMDL for sediment includes Richland Creek and calls for prioritization of channel stabilization projects and reductions in contributions of sediment from construction site runoff. The site is not located in the vicinity of any designated Wild and Scenic Stream. The *Soil Survey* lists the predominate soils of the site as moderately well drained Tippah silt loams and well drained Providence silt loams.

The land disturbance activity is scheduled to begin during February 2026. According to records of the USDA for the period 1951-81, average annual rainfall for the area is in the amount of 55.43 inches per year. Average monthly rainfall for the area is represented in the following table:

<b>Month</b>	<b>Average Rainfall* (inches)</b>
January	5.44
February	4.83
March	6.09
April	5.41
May	4.83
June	3.34
July	5.67
August	3.60
September	3.56
October	2.72
November	4.20
December	5.74

\* Source: 30 year average, Pelahatchie Station, USDA Soil Survey

### **3.0 PROPOSED SITE IMPROVEMENTS**

---

The proposed site improvements will include clearing approximately 127 acres and grading of approximately 10 acres of the site for installing stormwater management measures. Stormwater measures will include installation of a stabilized entrance, perimeter controls, sediment traps and basins, and final stabilization of the finished site. Figures included depict the locations of planned improvements and stormwater flow patterns.

Site improvement activities will include the following:

1. Site clearing to remove trees and brush;
2. Site grading to install sediment traps and basins; and
3. Establishment of permanent vegetation in areas of bare soils.

#### **4.0 PROJECT SCHEDULE**

---

The owner plans to conduct land disturbance activities during winter 2026. A preliminary schedule summary for land disturbance activities is presented below. In the event sections of the project are completed on different schedules, the listed stormwater measures are to be required for the associated activity on any section of the project, regardless of the status of other sections.

<b>Activity</b>	<b>Stormwater Measures</b>	
	<b>Initial</b>	<b>Final</b>
Site Clearing	Vegetated buffers to remain during clearing established along stream channel. Construction entrance, perimeter controls, outlet protection and diversions installed prior to major clearing commencing.	Vegetated buffers, entrance, stabilized drains, outlet protection, brush barriers and perimeter controls established and maintained.
Site Grading for Sediment Controls	Vegetated buffers, perimeter controls, construction entrance and outlet protection installed prior to grading work commencing.	Mulching and seeding to be installed immediately as clearing progresses and design grades are achieved. Temporary measures including perimeter silt fencing and brush barriers removed once permanent vegetation has been established and bare soils are adequately stabilized.

## **5.0 POTENTIAL SOURCES OF STORMWATER POLLUTION**

---

In order to complete the preceding tasks, certain onsite activities will be performed which have the potential to generate sources of stormwater pollution during a storm event. These activities include:

1. Clearing and grubbing of trees and stumps.
2. Grading and placement of fill materials for sediment controls.
3. Equipment maintenance and fueling.

Without proper control measures in-place the onsite activities listed above could potentially introduce pollutants to stormwater during significant rain events. The primary pollutant of concern during activities at the site is suspended solids (i.e., silts, clays and other particulate materials) that can be eroded and transported offsite in stormwater runoff. Secondary pollutants of concern include the oil/grease from equipment maintenance and the fuel storage for equipment refueling. The proposed best management practices to minimize the potential for pollutants to impact stormwater runoff from the site are discussed in the following sections.

## **6.0 BEST MANAGEMENT PRACTICES**

---

### **6.1 GENERAL**

Various control measures will be implemented at the site during clearing to prevent stormwater pollution and impacts to receiving waters. BMPs proposed for each of the potential sources of stormwater pollution are identified below, and proposed erosion and sediment controls are illustrated in the included Figures.

<b>Onsite Activity</b>	<b>Control Measures (BMPs) to Prevent Stormwater Pollution</b>
Heavy equipment and vehicle traffic	Install a stabilized construction entrance prior to land disturbing activities. Establish stable paths for vehicle traffic across the site. Restrict traffic to and from the site. Limit work during wet periods.
Site clearing and grubbing	Install and maintain silt fencing in down-gradient locations and diversion berms in up-gradient locations. Install outlet protection at outfalls. Install terracing and side cuts along slope contours. Maintain existing vegetation and vegetated buffers around areas of disturbance. Apply temporary seeding and mulching immediately upon completing clearing to stabilize disturbed areas that will remain bare for more than 14 days. Apply permanent seeding and mulching upon achieving finished surfaces.
Grading for silt traps and basins.	Install silt traps and basins prior to substantial clearing in the upgradient drainage area. Stabilize berms and drainageways with vegetation immediately upon reaching design grades. Provide stabilized outlets from traps and basins to reduce velocity and prevent scour.
Fueling operations and material storage	Install secondary containment for any stationary temporary fuel storage tanks. Avoid overtopping of tanks during refueling. Do not leave pumps unattended during refueling. Maintain designated area for equipment parking, refueling, and material storage. Inspect storage areas daily for leaks or spills and clean up immediately.
Equipment maintenance	Maintenance of equipment will be performed off-site except in an emergency, and when unavoidable will be conducted in a manner to capture and contain any liquids such as oil or hydraulic fluids and to prevent contact during storm events. Equipment will be inspected daily for leaks, drips, or spills.



## **6.2 NON-STRUCTURAL PRACTICES**

Nonstructural controls are also referred to as source controls. These source controls are operational practices intended to improve stormwater quality by minimizing or eliminating the accumulation and potential contact of pollutants with stormwater runoff at or near their source. As emphasized by the EPA, source controls have been given the highest priority for implementation in this SWPPP as the most cost-effective, practical, and environmentally sound approach to pollution prevention. In accordance with the General Permit, the SWPPP includes the following stormwater source management controls:

- Limiting traffic to designated areas with stabilized surfaces that avoid steep slopes will minimize land disturbance and offsite tracking of sediments. Traffic will be kept away from disturbed soils and wet soils except as necessary for performing necessary clearing and establishment of vegetative cover.
- The total area of disturbance will be limited to the minimum amount necessary to perform the clearing activities. Buffers of existing vegetation will remain in place along the stream channel indicated on the site plans in order to prevent erosion and reduce sedimentation.
- Inspections will be conducted a minimum of once a week to look for signs of erosion and other objectionable discharges as well as vegetative or structural practices in need of repair or maintenance. The results of the inspections as well as actions taken will be recorded. Inspection procedures are discussed in more detail in Section 9.
- No fuels, fertilizers, pesticides, or other potentially toxic materials will be stored at the site over extended periods. Fuels, fertilizers, and pesticides may be used at the site, but only the amount required for the specific application will be kept at the site and only during the period the materials are being actively used. When used on-site, these types of chemicals will be stored either inside a vehicle, roofed structure, or otherwise covered and away from the potential for contact with rainfall and runoff.
- Areas of disturbed soils or areas where active erosion is otherwise likely to occur will be stabilized by establishing vegetative measures immediately upon completion of disturbance activities. Disturbed soils will at a minimum receive application of permanent seeding and mulch.

### **6.3 STRUCTURAL PRACTICES**

Structural controls are physical BMPs designed to contain and treat stormwater runoff as well as control the volume and discharge rate. Structural practices will divert flows from exposed soils and minimize suspended solids in stormwater runoff. In accordance with the General Permit, the SWPPP includes the following structural practices:

- A stabilized aggregate entrance will be installed to provide stable ingress and egress for traffic to and from disturbed areas of the site. The work proposed consists of timber clearing, and will involve delivery of heavy equipment to the site and subsequent hauling of timber and woody debris from the site. No materials other than those necessary to establish erosion and sediment control measures are to be brought to the site. Delivery, refueling, and other miscellaneous traffic associated with the proposed site work will be restricted to the stabilized surface of the aggregate entrance.
- Stormwater diversion berms (including but not limited to side cuts and terraces) will be built along the contours of slopes as needed to reduce the velocity of runoff crossing disturbed areas. These structures will divert surface flow away from the bare soils of the site and onto stabilized areas with established vegetation. These diversion measures will be installed prior to further soil disturbance down gradient and will be stabilized using seeding and mulching.
- Silt fences will be installed along the perimeter in down-gradient locations prior to substantial clearing. Silt fences will be used along the perimeter of disturbed areas as appropriate to prevent sedimentation of down-gradient areas. Silt fencing will not be used across channels or other similar areas of concentrated flow.
- Drain and outlet protection including brush barriers and vegetated swales will be installed as indicated by site plans in order to reduce discharge of sediments from site.
- Temporary silt traps and sediment basins will be installed along existing drainageways to reduce runoff velocity and provide temporary storage of stormwater runoff sufficient to provide effective removal of suspended sediments.

## **6.4 VEGETATIVE PRACTICES**

Vegetative practices will be implemented to preserve existing vegetation where possible. Disturbed areas will be re-vegetated as clearing progresses. In accordance with the conditions of the General Permit: Soil stabilization-vegetative stabilization measures must be initiated immediately whenever any clearing, grading, excavating or other land disturbing activities have temporarily or permanently ceased on any portion of the site and will not resume for a period of fourteen (14) days or more. The SWPPP includes the following specific vegetative practices:

- Buffer zones of existing vegetation will be maintained along the site perimeter and along the stream channel on the western boundary of the site in order to provide stabilization of soils and reduce runoff velocities.
- All areas of disturbed soils will be immediately seeded with a permanent cover of perennial grasses as soon as final grades are reached for any portion of work, depending on the time of year, in accordance with plan specifications. When the season of the year is not suited to planting or seeding permanent vegetative cover, a temporary cover (annual grasses) may be established to protect disturbed areas from substantial erosion. In the case temporary seeding is used, permanent vegetation will be established once seasonal conditions are more favorable. The surface of disturbed areas to be seeded will be prepared and mulched to aid in the establishment of grasses.

## **7.0 IMPLEMENTATION**

---

Stormwater controls will be implemented, as needed, to prevent erosion and adverse impacts to receiving waters. Site work will be sequenced so that clearing operations can begin and end as quickly as possible. Sediment trapping, perimeter controls and diversion measures will be installed as a first step in the project sequence. Final stabilization consisting of a uniform perennial vegetative cover with a surface density of at least 70% will be established upon completion of clearing work. The proposed sequence of activities is as follows:

1. Establish area of vegetated buffer around work area and along stream channel to be protected from soil disturbing activities clearing;
2. Install a construction entrance entering the paved public road;
3. Install silt fencing along site perimeter;
4. Divert runoff away from areas to be graded;
5. Install brush barriers, silt traps and sediment basins along existing drains;
6. Conduct clearing and grubbing in upgradient portions of the site;
7. Stabilize disturbed areas immediately upon completion of clearing using seeding and mulching;
8. Remove temporary measures such as silt fencing and brush barriers once disturbed areas are stabilized.

## **8.0 HOUSEKEEPING AND TRAINING**

---

### **8.1 GOOD HOUSEKEEPING**

The project site will be kept in a clean and orderly condition during site activities. Fuels and other potentially hazardous chemicals will not be stored on site or will be kept at a designated location and away from runoff. Equipment fueling and routine maintenance will be performed at a designated location away from runoff. Major equipment repairs will be conducted off-site. Any leaks or spills will be immediately collected and properly disposed of. Fertilizers and other chemicals to be used at the site will be stored in labeled containers and away from potential exposure to rainfall and runoff. Employees responsible for handling potentially hazardous materials will receive training as appropriate to ensure adequate knowledge of proper use, handling, storage, and disposal methods. Inspections will be conducted at least weekly and immediately following rainfall events that result in a discharge. Inspections will be documented using the designated inspection forms and any repairs or modifications required will be initiated within 24 hours of discovery or as soon as conditions allow. Special attention will be given to inspection and maintenance of controls to reduce discharge of sediment to receiving waters to the maximum extent practicable. All employees will receive training as appropriate to ensure familiarity with the applicable conditions of this SWPPP.

### **8.2 EMPLOYEE TRAINING**

Employees will be instructed to perform regular cleanup in their work areas to prevent storm water from becoming contaminated with waste materials. Employees will be instructed to promptly clean up spilled materials to prevent contact with storm water. Locations of housekeeping and spill response equipment and supplies will be provided to all employees. Where appropriate, employees will be provided instructions on the proper methods to secure drums, tanks and other containers. Those working near such containers will also be instructed to routinely check the integrity of the containers to make sure there are no leaks. Employees responsible for handling potentially hazardous materials will receive training as appropriate to ensure adequate knowledge of proper use, handling, storage and disposal methods. All employees will receive training as appropriate to ensure familiarity with the applicable conditions of this SWPPP, and in accordance with the conditions set forth in ACT5, T-20 and T-21 of the General Permit.

## **9.0 INSPECTION PROCEDURES**

---

The Prime Contractor will be responsible for inspection procedures during site activities. Inspection of all receiving streams (if feasible), outfalls, erosion and sediment controls and other SWPPP requirements shall be performed during permit coverage using a copy of the form provided in the Large Construction Forms Package (Attachment D), and inspections shall be performed by qualified personnel in accordance with ACT6, S-5 of the General Permit on the following schedule:

- At least weekly for a minimum of four inspections per month;
- After rain events that produce a discharge; and
- As often as necessary to ensure that appropriate erosion and sediment controls have been properly constructed and maintained and to determine if additional or alternative controls are needed.

A rain gauge will be set up on-site during site activities and read as needed to comply with this requirement. Inspections will include the following elements:

- Construction entrance will be checked for accumulation on the rock surface and adjacent asphalt roadway.
- Earthen diversion berms and drains will be checked for erosion or washout;
- Silt fences will be inspected for depth of collected sediment, tears, secure fabric placement in trench and signs of undercutting, secure fabric attachment to posts, and firm post placement;
- Straw wattles will be checked regularly for undermining or deterioration;
- All seeded areas will be checked regularly to assure that a good stand is maintained;
- Areas of steep slopes will be checked for signs of rill and gully erosion;
- Outlet protection will be checked for proper installation, damage, and accumulated sediments;
- Stormwater runoff and any ponded water up-gradient of silt fencing or outlet protection will be visually observed to ensure that sheens, turbidity, or other objectionable material is not present; and
- All stormwater runoff discharge points will be inspected for non-numeric limitations in accordance with the General Permit (see Section 11).

## **10.0 MAINTENANCE PROCEDURES**

---

The Prime Contractor will be responsible for maintenance procedures during site activities. Sediment is to be removed from structural controls before deposits reach  $\frac{1}{2}$  the height of the control, and from sediment basins prior to reduction of capacity by  $\frac{1}{2}$ . Non-functional controls will be repaired, replaced, or supplemented with additional measures within 24 hours of discovery or as soon as site conditions allow. If damage to stormwater controls is identified during the inspection procedures outlined in the preceding sections, maintenance practices will be implemented to maintain the stormwater pollution prevention elements. Such maintenance practices are as follows:

- Equipment parking and material storage areas will be kept free from accumulated debris, litter, and leaked or spilled fuels, lubricants, or other chemicals;
- Construction entrance will be cleaned or rock replaced as necessary to address accumulation of soils.
- Diversions will be regraded and restabilized as needed;
- Outlet protection will be cleaned or replaced as necessary to reduce discharge of sediment;
- Silt fencing and erosion checks will be replaced as needed, and sediment collected up-gradient will be removed before it has reached one-half the height of the fence; and
- Eroded areas will be regraded, fertilized and re-seeded as needed, and watered if necessary, to establish adequate cover.
- Materials generated during activities at the site including soils, litter, or any materials otherwise prohibited from stormwater discharges will be removed from the adjacent public roadways immediately upon discovery.

## **11.0 NON-NUMERIC LIMITATIONS**

---

In accordance with the General Permit, stormwater discharges from the site shall be free from the following:

1. Debris, oil, scum, and other floating materials at levels exceeding trace amounts;
2. Eroded soils and other materials that will settle to form objectionable deposits in receiving waters;
3. Suspended solids, turbidity, and color at levels inconsistent with the receiving waters; and
4. Chemicals in concentrations that would cause violation of State Water Quality Criteria in the receiving waters.

The following discharges are specifically not allowed according to the conditions of the General Permit:

1. Wastewater from washout of concrete;
2. Wastewater from washout and cleanout of stucco, paint, form release oils, curing compounds and other construction materials;
3. Fuels, oils, and other pollutants used in vehicle and equipment operation and maintenance;
4. Soaps or detergents used in vehicle and equipment washing;
5. Wastewater from sanitary facilities, including portable toilets;
6. Contaminated discharges from dewatering activities; and
7. Toxic or hazardous substances from a spill or other release.



## **12.0 REPORTING AND RECORDKEEPING**

---

### **12.1 GENERAL**

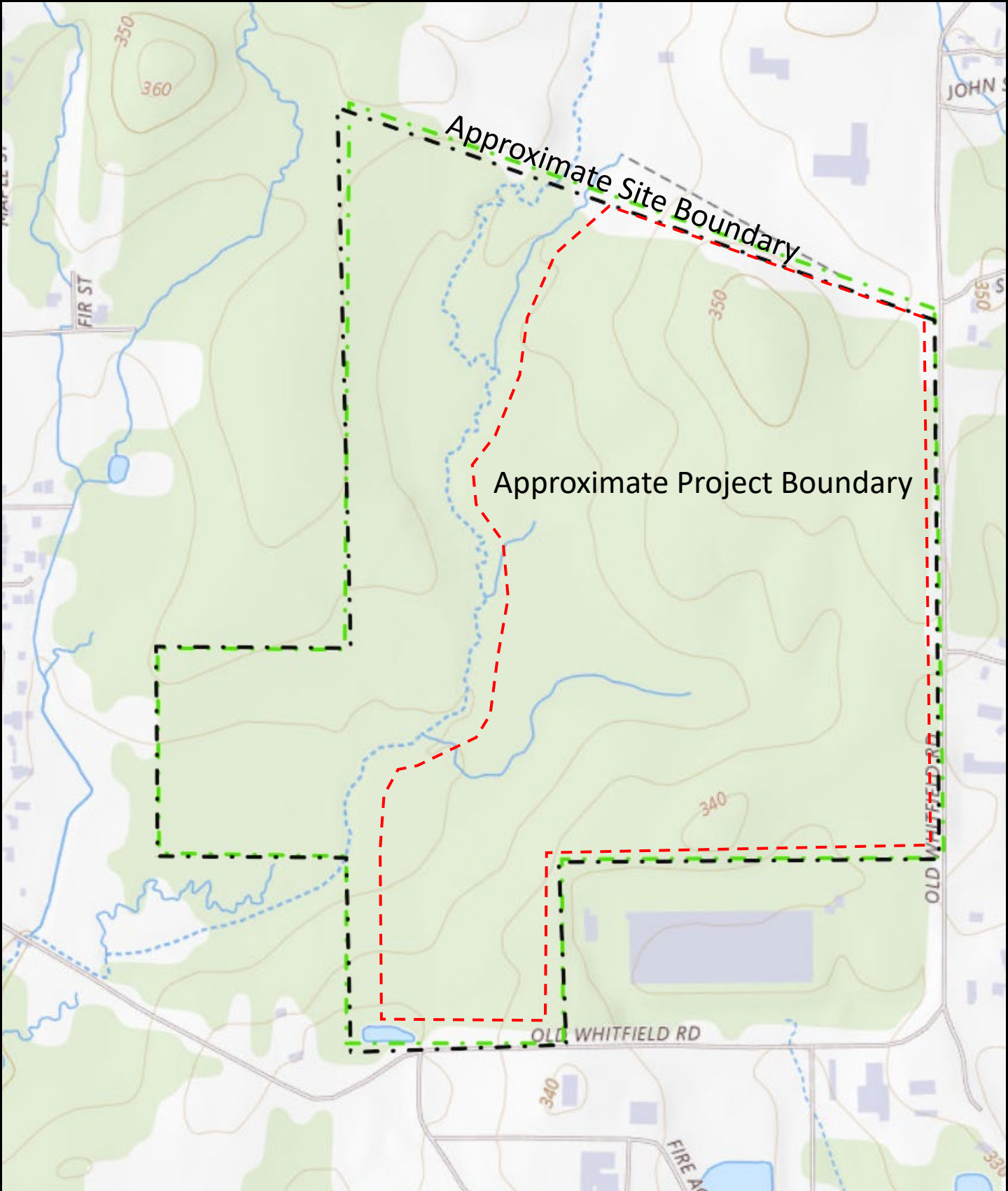
The Prime Contractor will be responsible for reporting and recordkeeping during activities at the site. All inspections will be reported on copies of the Weekly Inspection Report and Certification Form for Erosion and Sediment Controls. A copy of this form is included in **Attachment D**.

All records, reports, and information resulting from activities required by this permit will be retained at the site during the duration of the project, and at the offices of the Prime Contractor for a period of at least three years from the date of the LCNOI, inspection, measurement, or report.

### **12.2 NON-COMPLIANCE REPORTING**

The Prime Contractor will notify MDEQ orally within **24 hours** from the time they become aware of circumstances that result in non-compliance, and will provide a written report to MDEQ within **10 working days** of the time they become aware of the circumstances. The report will describe the cause, the exact dates and times, steps taken or planned to reduce, eliminate, or prevent reoccurrence and, if the non-compliance has not ceased, the anticipated time for correction.

## **FIGURES**



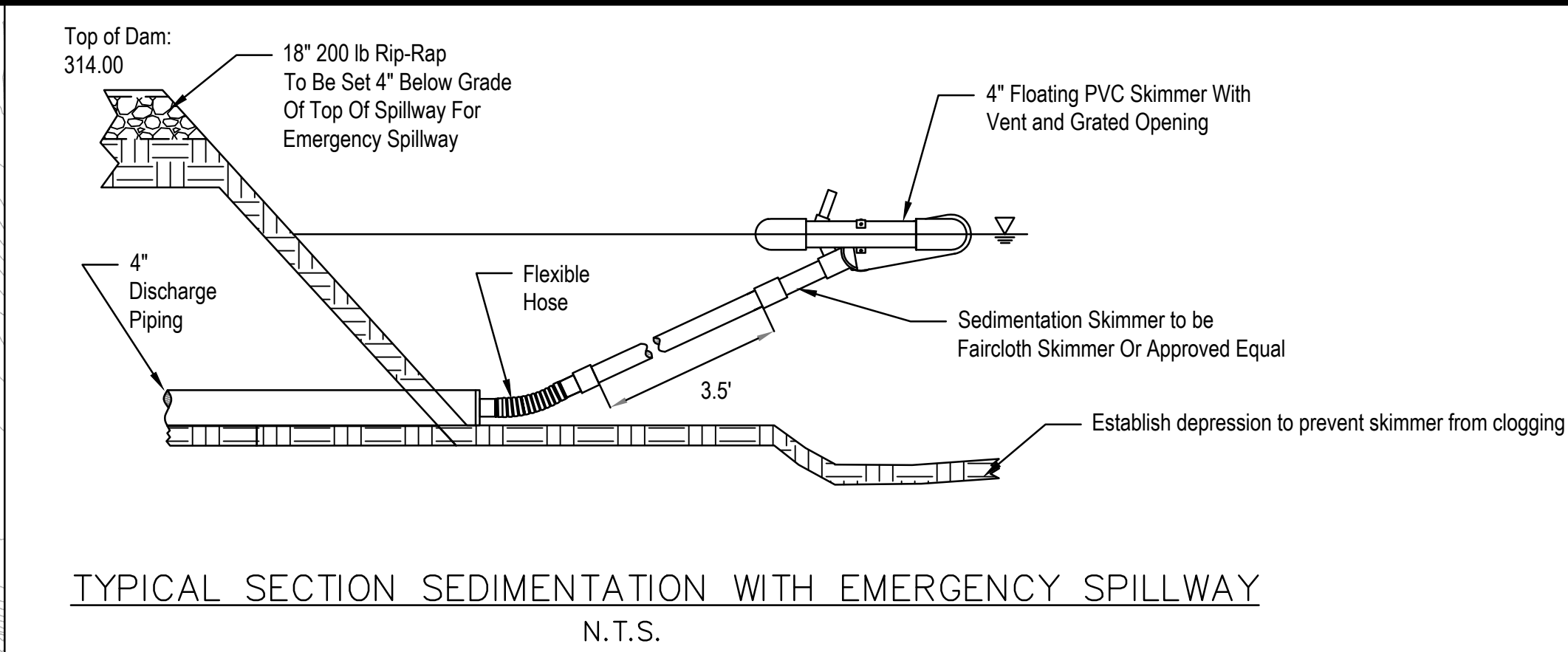
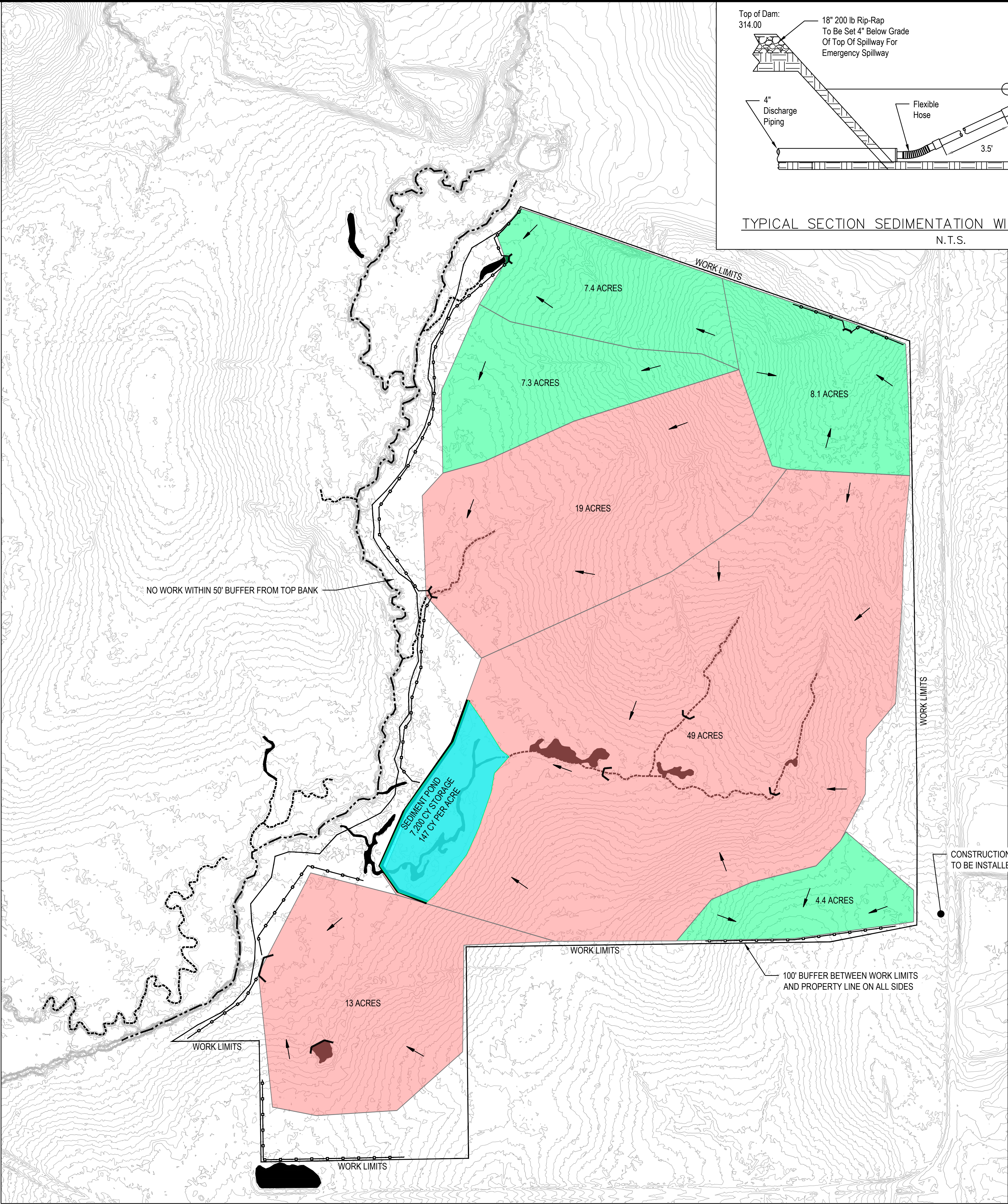
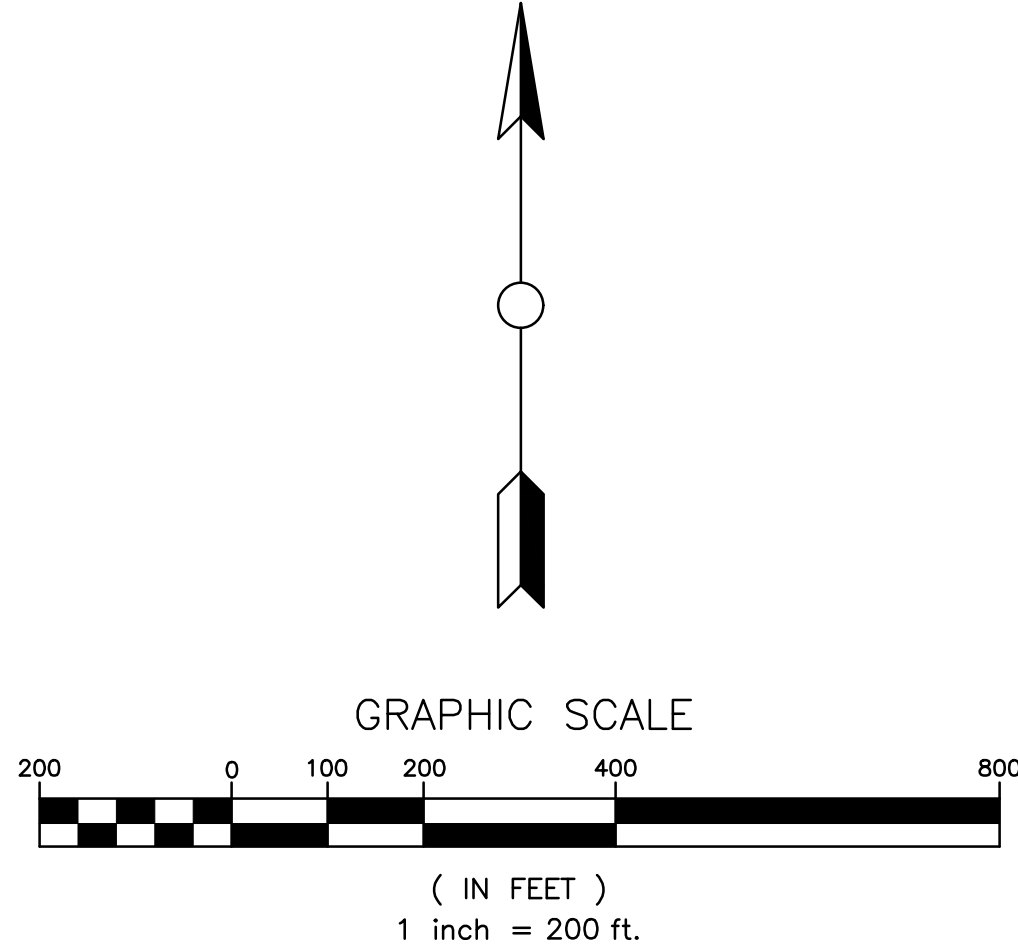
## **West Rankin Industrial Park, Site Clearing**

Sections 21, 22, 27 & 28, T 5N, R 2E

*Jackson SE, MS & Whitfield MS 7.5' Quadrangles*

Pearl, Rankin County, Mississippi





- KEY
- INTERMITTENT STREAM
  - EPHEMERAL STREAM
  - WETLAND
  - SILT FENCE
  - SILT TRAP
  - FLOW PATTERNS
  - SEDIMENT POND
  - DRAINAGE BASIN (< 10 ACRES)
  - DRAINAGE BASIN (> 10 ACRES)

ENGINEERING SERVICE

CONSULTING ENGINEERS

REILAND CRENSHAW

Issued for: By: Date:

Review: \_\_\_\_\_

Bidding: \_\_\_\_\_

Construction: \_\_\_\_\_

As-Built: \_\_\_\_\_

REVISIONS

No.	By:	Date:

OWNER

RANKIN FIRST ECONOMIC DEVELOPMENT AUTHORITY

RANKIN COUNTY, MS

PROJECT

WEST RANKIN INDUSTRIAL PARK

CLEARING AND GRUBBING

SHEET TITLE

SWPPP

Design by: JLS

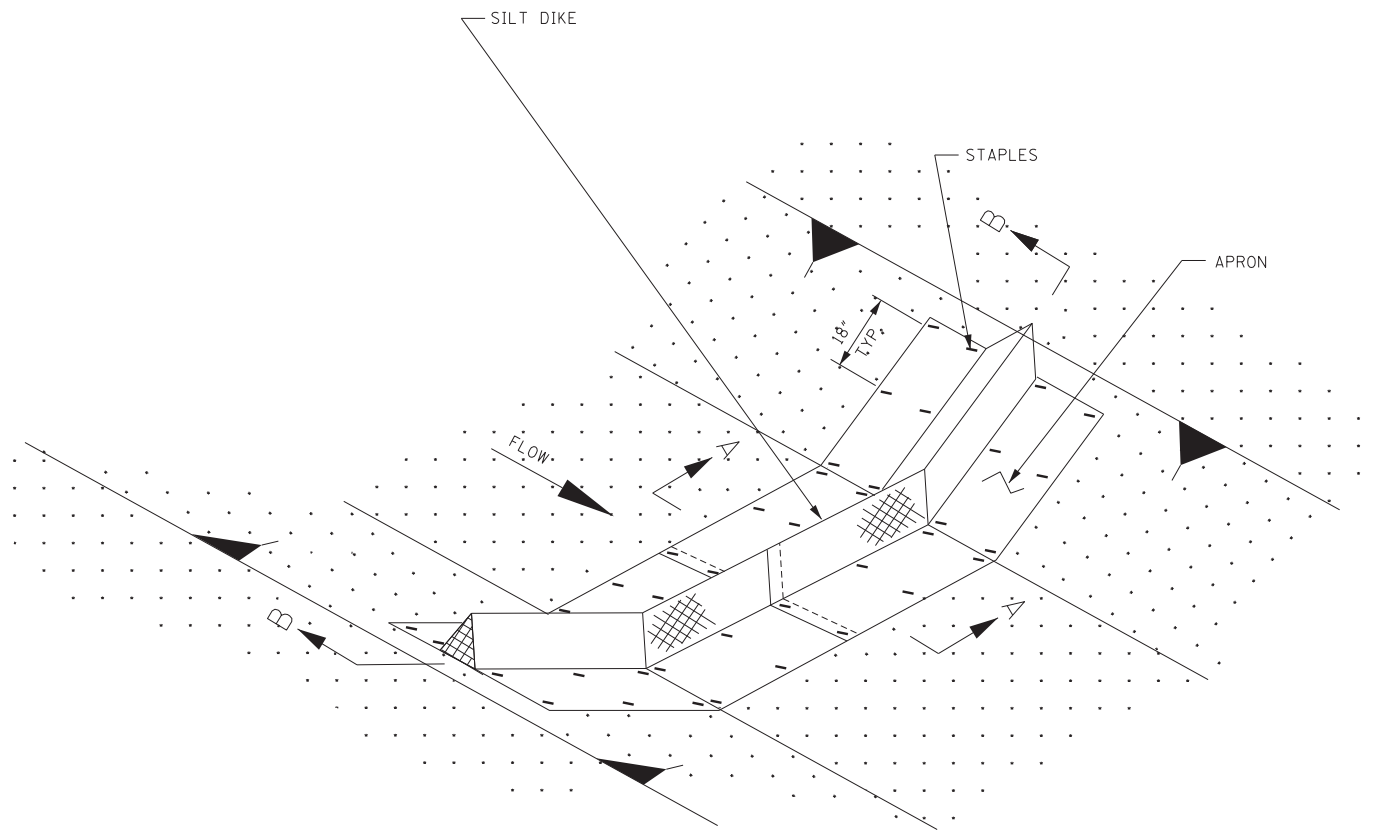
Review by: CB

SHEET

A-1



1. A STABILIZED CONSTRUCTION ENTRANCE SHALL BE CONSTRUCTED AT POINTS OF EGRESS FROM UNSPECIALIZED AREA OF THE PROJECT TO PUBLIC ROADS WHERE OFFSITE TRACKING OF MUD COULD OCCUR, TRAFFIC FROM UN-STABILIZED AREAS OF THE PROJECT SHALL BE DIRECTED THRU THE STABILIZED ENTRANCE. BARRIERS, FLAGGING, OR OTHER POSITIVE MEANS SHALL BE USED AS REQUIRED TO LIMIT AND DIRECT VEHICULAR EGRESS ACROSS THE STABILIZED ENTRANCE.
2. THE CONTRACTOR MAY PROPOSE AND ALTERNATIVE TECHNIQUE TO MINIMIZE OFFSITE TRACKING OF SEDIMENT, THE ALTERNATIVE MUST BE REVIEWED AND APPROVED BY THE ENGINEER PRIOR TO ITS USE.
3. ALL MATERIALS SPILLED, DROPPED, OR TRACKED ONTO PUBLIC ROADS (INCLUDING THE STABILIZED CONSTRUCTION ENTRANCE AGGREGATE AND CONSTRUCTION MUD) SHALL BE REMOVED DAILY, OR MORE FREQUENTLY IF SO DIRECTED BY THE ENGINEER.
4. SIZE I STABILIZER AGGREGATE SHALL BE USED.
5. THE CONSTRUCTION ENTRANCE SHALL BE CLEANED WHEN NECESSARY.

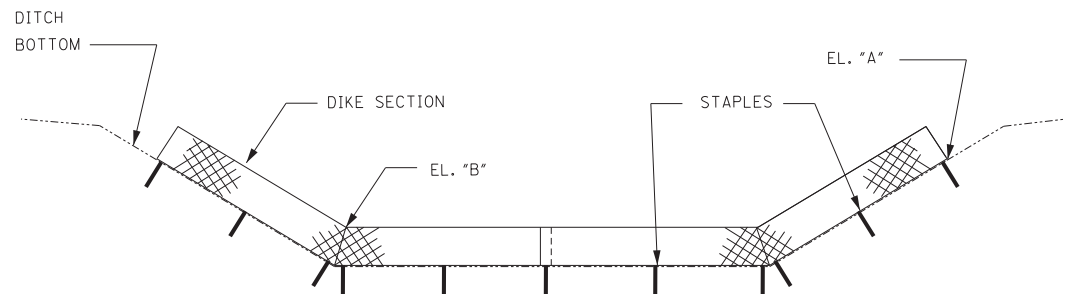


NOTES:

NOTES:

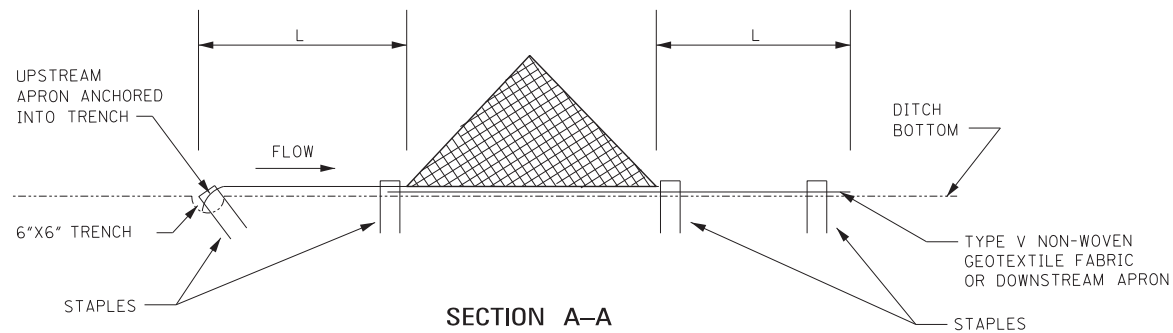
1. SILT DIKES CAN BE USED IN DITCHES WITH CONCENTRATED FLOWS WITHIN THE CLEAR ZONE WHERE RIPRAP CANNOT BE USED.
2. SILT DIKES MAY ALSO BE USED:
  - A. IN AREAS WHERE CONSTRUCTION TRAFFIC TRAVELS (AS SHOWN ON WK. NO. ECD-16), PROVIDED THE SILT DIKE REBOUNDS TO ITS ORIGINAL SHAPE. SILT DIKES WHICH DO NOT REBOUND TO THEIR ORIGINAL SHAPE SHALL BE REPLACED BY THE CONTRACTOR AT NO ADDITIONAL EXPENSE TO THE DEPARTMENT.
  - B. AT THE ENDS OF AND ALONG THE EDGES OF CONSTRUCTION ROADS THAT CROSS THE WATERS OF THE U.S. (AS SHOWN ON WK. NO. ECD-17).
3. THE PLACEMENT INTERVAL BETWEEN SILT DIKE DITCH CHECK SHALL BE 100' UNLESS SHOWN OTHERWISE ON THE PLANS OR EROSION CONTROL PLAN APPROVED BY THE ENGINEER. SEE SPACING GUIDANCE ON WK. NO. ECD-4.
4. INSTALLATION SHALL BE IN ACCORDANCE WITH MANUFACTURER'S RECOMMENDATIONS.
5. THE TRIANGULAR SILT DIKE SHAPE IS ONLY SHOWN FOR DEPICTION PURPOSES. OTHER SHAPED SILT DIKES MAY BE USED.
6. WHEN THE SILT DIKE, USED AS A DITCH CHECK, IS MANUFACTURED WITH AN APRON ON ONE SIDE ONLY, THE SILT DIKE SHALL BE INSTALLED AS SHOWN IN SECTION A-A. THE APRON SHALL BE INSTALLED ON THE UPSTREAM SIDE AND TYPE V NON-WOVEN GEOTEXTILE FABRIC INSTALLED ON THE DOWNSTREAM SIDE.
7. THE COST OF THE FABRIC SHALL BE INCLUDED IN OTHER ITEMS BID.

PLAN VIEW



POINT "A" SHALL BE HIGHER THAN POINT "B" TO ENSURE THAT WATER FLOWS OVER THE DIKE AND NOT AROUND THE ENDS

SECTION B-B



NOTE: STAPLES SHALL BE PLACED WHERE THE UNITS OVERLAP AND IN THE CENTER OF THE UNIT

SECTION A-A

SILT DIKE INSTALLATION FOR ROADWAY DITCHES

MISSISSIPPI DEPARTMENT OF TRANSPORTATION  
ROADWAY DESIGN DIVISION  
STANDARD PLAN

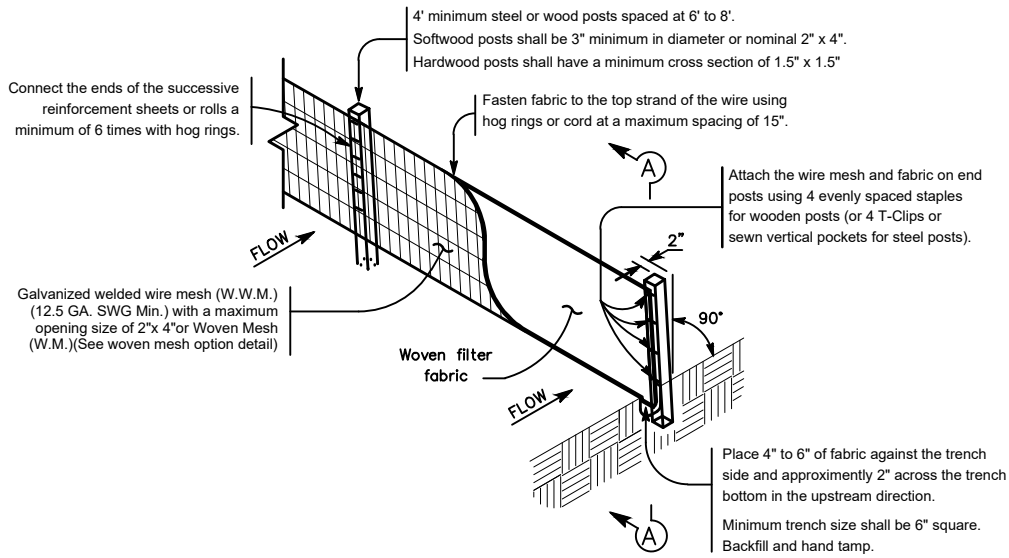
**DETAILS OF EROSION  
CONTROL SILT DIKE  
DITCH CHECK**



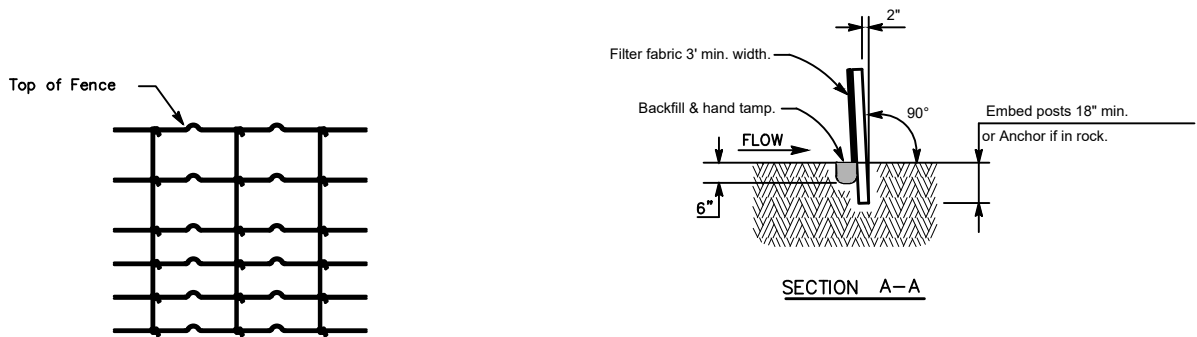
WORKING NUMBER  
ECD-7

SHEET NUMBER  
6107

ISSUE DATE: AUGUST 01, 2017



TEMPORARY SEDIMENT CONTROL FENCE



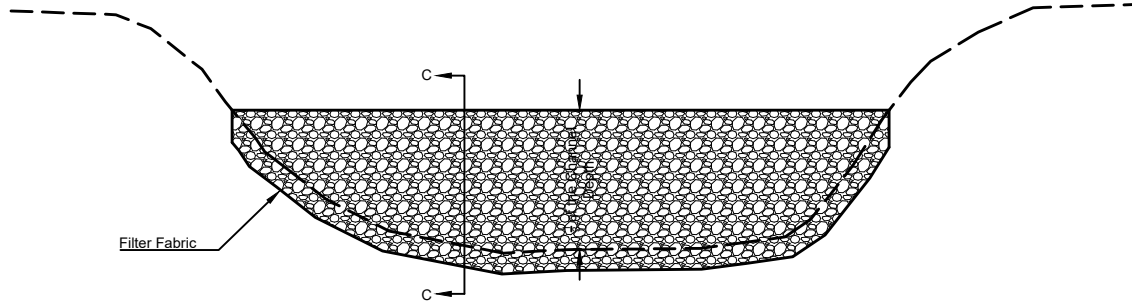
HINGE JOINT KNOT WOVEN MESH (OPTION) DETAIL

Galvanized hinge joint knot woven mesh (12.5 GA. SWG Min.) requires a minimum of five horizontal wires spaced at a maximum of 12 inches apart and all vertical wires spaced at a maximum of 12 inches apart.

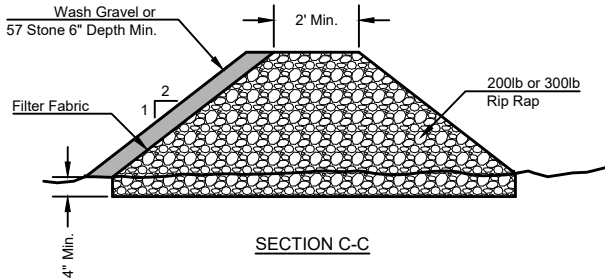
SEDIMENT CONTROL FENCE USAGE GUIDELINES

A sediment control fence may be constructed near the downstream perimeter of a disturbed area along a contour to intercept sediment from overland runoff. A 2 year storm frequency may be used to calculate the flow rate to be filtered.

Sediment control fence should be sized to filter a maximum flow through rate of 100 GPM/FT. Sediment control fence is not recommended to control erosion from a drainage area larger than 2 acres.



ROCK DAMS FOR OPEN CHANNELS



SECTION C-C

GENERAL NOTES

1. Rock Dams shall be placed in locations shown on the plans or at the Engineers direction.
2. Materials (aggregate, filter fabric, excavation, sandbags, etc.) shall be included in the pay item for Rock Dams
3. Side slopes should be 2:1 or flatter. Dams within the safety zone shall have sideslopes of 6:1 or flatter.
4. Filter dams should be embedded a minimum of 4" into existing ground.
5. The guidelines shown hereon are suggestions only and may be modified by the Engineer.



ENGINEERING SERVICE  
CONSULTING ENGINEERS

Issued for:	By:	Date:
Review		
Design		
Construction		
As-Built		

REVISIONS		
No.	By:	Date:

OWNER

RANKIN FIRST ECONOMIC DEVELOPMENT AUTHORITY  
RANKIN COUNTY, MS

PROJECT

WEST RANKIN INDUSTRIAL PARK  
CLEARING AND GRUBBING

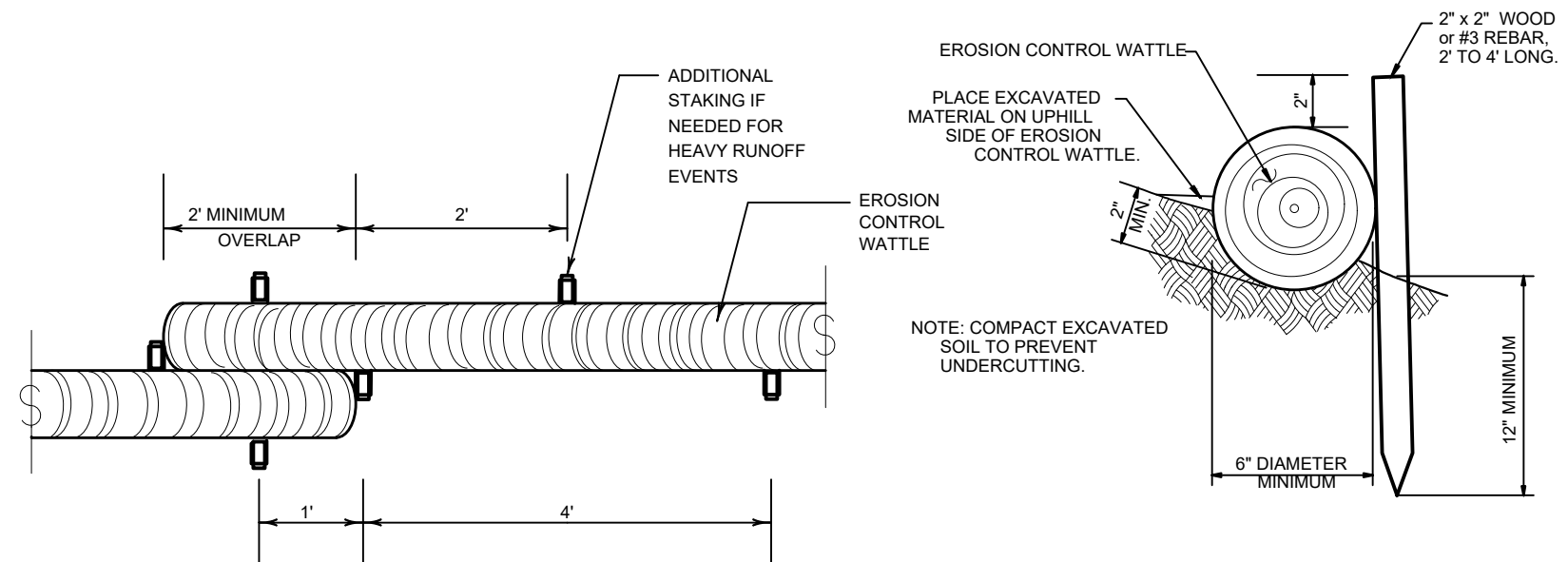
SHEET TITLE

TEMPORARY SILT FENCE &  
ROCK DAMS FOR OPEN CHANNELS

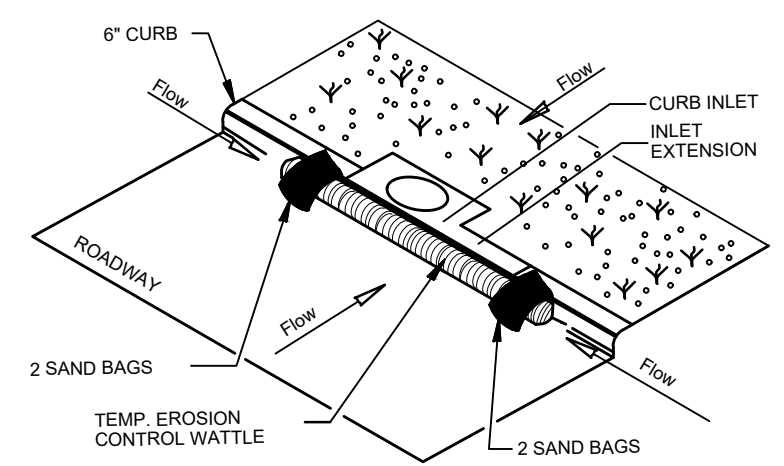
Design by:	CSB
Review by:	RAS

SHEET

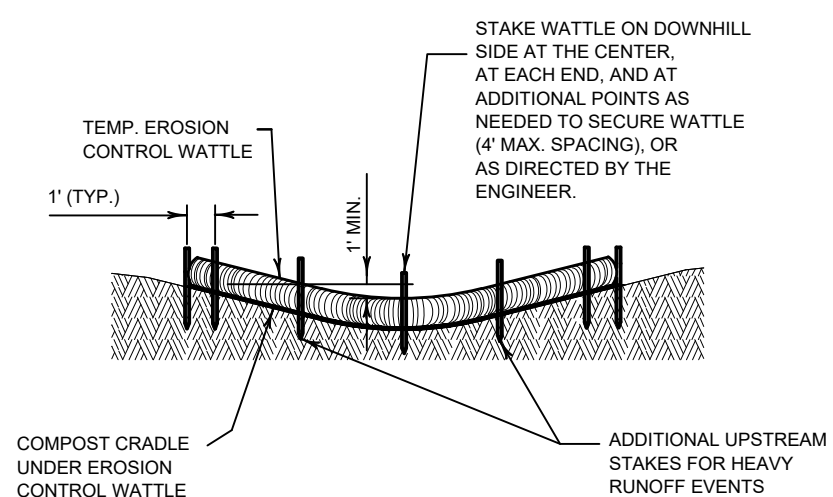
ECD-3



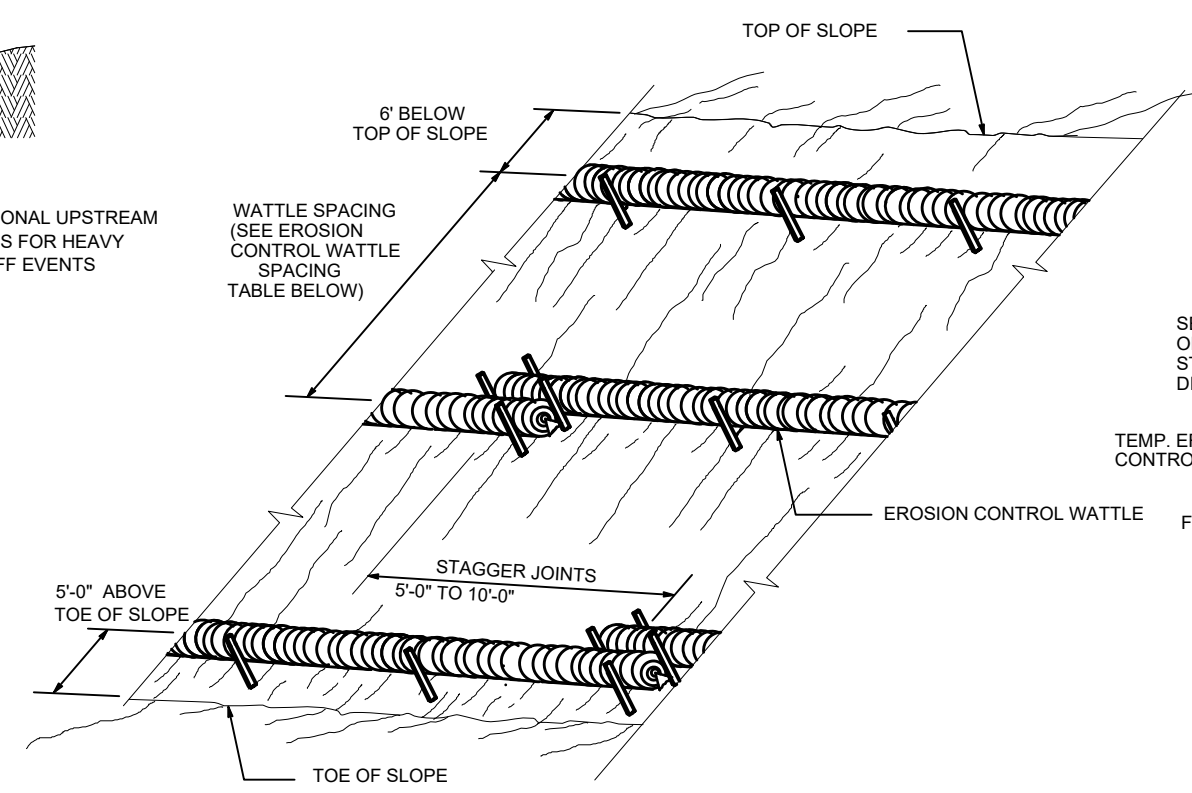
STAKE AND TRENCHING ANCHORING DETAIL



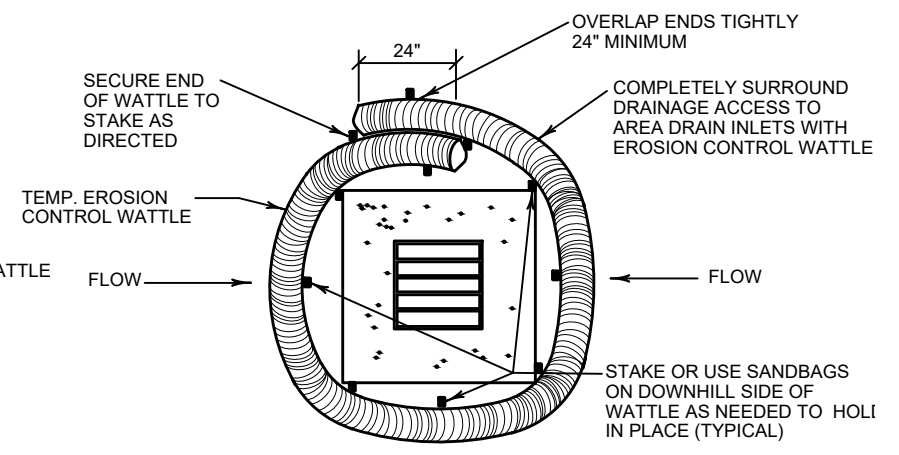
WATTLE AT CURB INLET



WATTLE DITCH CHECK



WATTLES ON SLOPES  
STAKE AND TRENCHING ANCHORING



WATTLE AT DROP INLET

WATTLE SPACING TABLE				
SLOPE	DIAMETER			
	6"	8"	12"	18"
1:1 OR STEEPER	5'	10'	15'	20'
2:1	10'	20'	30'	40'
3:1	15'	30'	45'	60'
4:1 OR FLATTER	20'	40'	60'	80'

\* ADJUSTMENTS CAN BE MADE FOR SOIL TYPE:  
SOFT, LOAMY SOILS-ADJUST ROWS CLOSER TOGETHER;  
HARD, ROCKY SOILS- ADJUST ROWS FARTHER APART





Issued for:	By:	Date:
Review		
Revising		
Construction		
As-Built		

REVISIONS		
No.	By:	Date:

OWNER

RANKIN FIRST EDA  
RANKIN COUNTY, MS

PROJECT

WEST RANKIN INDUSTRIAL PARK  
CLEARING AND GRUBBING

SHEET TITLE

VEGETATION SCHEDULE

Design by: JLS  
Review by: RAS

Rankin County Vegetation Schedule						
Erosion Control Item		Seasonal Applications - Dates & Rates				Requirements
		Spring & Summer		Fall & Winter		
Required on Project	Description	Rates	Dates	Rates	Dates	
	Topsoil for Slope Treatment	4" Thick	March 1 to September 1	4" Thick	September 1 to March 1	Topsoil is required in areas directed by the Engineer
x	Ground Preparation	Per Sq. Yd.	March 1 to September 1	Per Sq. Yd.	September 1 to March 1	Ground preparation is required on area to receive solid sodding or seeding
	Agricultural Limestone	2 Tons / Acre	March 1 to September 1	2 Tons / Acre	September 1 to March 1	Limestone shall be mechanical spread uniformly and incorporated into the soil prior to planting
x	Combination Fertilizer (13-13-13)	1000lbs / Acre	March 1 to September 1	1000lbs / Acre	September 1 to March 1	Fertilizer shall be mechanical spread uniformly and incorporated into the soil prior to planting
	Superphosphate	1000lbs / Acre	March 1 to September 1	1000lbs / Acre	September 1 to March 1	
	Seeding (Common Bermuda grass)	20lb / Acre	March 1 to September 1	20lb / Acre	September 1 to March 1	Seed required on disturbed areas. Unhulled seed may be required during the dormant season as directed
x	Seeding (Bahia grass)	25lb / Acre	March 1 to September 1	25lb / Acre	September 1 to March 1	Seed required on disturbed areas.
	Seeding (Texoka Buffalo Grass)	30lb / Acre	March 1 to September 1	30lb / Acre	September 1 to March 1	Seed required on slops steeper that 3:1
x	Seeding (Tall Fescue)			20lb / Acre	August 1 to April 1	Seed required on disturbed areas.
	Seeding (Crimson Clover)			25lb / Acre	August 1 to April 1	Seed required on disturbed areas.
	Vegetative Material for Mulch	2 Tons / Acre	March 1 to September 1	2 Tons / Acre	September 1 to March 1	
	Solid Sodding	Per Square Yard	March 1 to September 1	Per Square Yard	September 1 to March 1	Solid Sod required on areas specified in the contract or by the engineer
	Watering	20 Gals / SY	March 1 to September 1	20 Gals / SY	September 1 to March 1	Required on all areas receiving solid sod.
Temporary Erosion Control Measures						
	Light Ground Preparation	Per Sq. Yd.		Per Sq. Yd.		Required on all areas receiving temporary grassing.
	Seeding (Brown Top Millet)	20lb / Acre	March 1 to September 1			Use as directed by the engineer.
	Seeding (Rye Grass)			25lb / Acre	September 1 to March 1	Use as directed by the engineer.
	Seeding (Oats)			90lb / Acre	September 1 to March 1	Use as directed by the engineer.
	Vegetative Material for Mulch	2 Tons / Acre		2 Tons / Acre		Use as directed by the engineer.
	Combination Fertilizer (13-13-13)	500lbs / Acre		500lbs / Acre		Use as directed by the engineer.

**ATTACHMENT A**

**Major Modification Form**



## MAJOR MODIFICATION FORM FOR LARGE CONSTRUCTION GENERAL PERMIT

Coverage No. **MSR10** \_\_\_\_\_ County \_\_\_\_\_

### INSTRUCTIONS

Coverage recipients shall notify the Mississippi Department of Environmental Quality (MDEQ) at least 30 days in advance of the following activities (check all that apply). This form should be submitted with a modified Storm Water Pollution Prevention Plan (SWPPP), updated USGS topographic map, Corps of Engineers Section 404 documentation and wastewater collection and treatment information, as appropriate.

☐ SWPPP details have been developed and are being submitted for MDEQ review for subsequent phases of an existing project.

☐ "Footprint" identified in the original LCNOI is proposed to be changed.

This form must be signed by the current coverage recipient under Mississippi's Large Construction General Permit. A different developer of new phases of existing subdivisions must apply for separate permit coverage through the submittal of a new complete LCNOI package. Coverage recipients are authorized to discharge storm water associated with proposed expansions of existing subdivisions or subsequent phases, under the conditions of the General Permit, only upon receipt of written notification of approval by MDEQ. All other modifications, such as changes of erosion and sediment controls used, must be in accordance with ACT6, S-1 (6) and S-2 (7) of the General Permit.

ALL INFORMATION MUST BE COMPLETED (indicate "N/A" where not applicable)

### CURRENT COVERAGE RECIPIENT INFORMATION

COVERAGE RECIPIENT CONTACT NAME: \_\_\_\_\_ PHONE # (\_\_\_\_) \_\_\_\_\_

COMPANY NAME: \_\_\_\_\_

STREET OR P.O. BOX: \_\_\_\_\_

CITY: \_\_\_\_\_ STATE: \_\_\_\_\_ ZIP: \_\_\_\_\_ E-MAIL: \_\_\_\_\_

IS THE APPLICANT DIFFERENT FROM THE CURRENT COVERAGE HOLDER? YES NO

### PREPARER/CONSULTANT INFORMATION (Complete if prepared by someone other than applicant.)

PREPARER/CONSULTANT CONTACT NAME: \_\_\_\_\_ PHONE # (\_\_\_\_) \_\_\_\_\_

COMPANY NAME: \_\_\_\_\_

STREET OR P.O. BOX: \_\_\_\_\_

CITY: \_\_\_\_\_ STATE: \_\_\_\_\_ ZIP: \_\_\_\_\_ E-MAIL: \_\_\_\_\_

MAY MDEQ CORRESPOND DIRECTLY WITH THE PREPARER / CONSULTANT REGARDING THE PROPOSED PROJECT / MODIFICATION? YES NO

### SITE INFORMATION

PROJECT NAME: \_\_\_\_\_

CITY: \_\_\_\_\_ TRIBAL LAND ID (N/A If not applicable): \_\_\_\_\_

**Latitude / Longitude Collected at Project Entrance or Construction Start Point:**

LATITUDE: \_\_\_\_ degrees \_\_\_\_ minutes \_\_\_\_ seconds LONGITUDE: \_\_\_\_ degrees \_\_\_\_ minutes \_\_\_\_ seconds

LAT & LONG COLLECTION METHOD (e.g., GPS, Map Interpolation): \_\_\_\_\_

REDUCTION IN ACREAGE: \_\_\_\_\_ ADDITIONAL ACREAGE TO BE DISTURBED: \_\_\_\_\_

TOTAL PROJECT ACREAGE: \_\_\_\_\_ ESTIMATED CONSTRUCTION END DATE: \_\_\_\_\_

IS THE PROJECT REROUTING, FILLING OR CROSSING A WATER CONVEYANCE ☐ YES ☒ NO  
OF ANY KIND? (If yes, contact the U.S. Army Corps of Engineers' Regulatory Branch for permitting requirements.)

IF THE PROJECT IS A SUBDIVISION OR A COMMERCIAL DEVELOPMENT, HOW WILL SANITARY SEWAGE  
BE DISPOSED? Check one of the following and attach the pertinent documents.

- ☐ Existing Municipal or Commercial System. Please attach plans and specifications for the collection system and the associated "Information Regarding Proposed Wastewater Projects" form or approval from County Utility Authority in Hancock, Harrison, Jackson, Pearl River and Stone Counties. If the plans and specifications cannot be provided at the time of LCNOI submittal, MDEQ will accept written acknowledgement from official(s) responsible for wastewater collection and treatment that the flows generated from the proposed project can and will be transported and treated properly. The letter must include the estimated flow.
- ☐ Collection and Treatment System will be Constructed. Please attach a copy of the cover of the NPDES discharge permit from MDEQ or indicate the date the application was submitted to MDEQ (Date: \_\_\_\_\_.)
- ☐ Individual Onsite Wastewater Disposal Systems for Subdivisions Less than 35 Lots. Please attach a copy of the Letter of General Acceptance from the Mississippi State Department of Health or certification from a registered professional engineer that the platted lots should support individual onsite wastewater disposal systems.
- ☐ Individual Onsite Wastewater Disposal Systems for Subdivisions Greater than 35 Lots. A determination of the feasibility of installing a central sewage collection and treatment system must be made by MDEQ. A copy of the response from MDEQ concerning the feasibility study must be attached. If a central collection and wastewater system is not feasible, then please attach a copy of the Letter of General Acceptance from the State Department of Health or certification from a registered professional engineer that the platted lots should support individual onsite wastewater disposal systems.

INDICATE ANY LOCAL STORM WATER ORDINANCE WITH WHICH THE PROJECT MUST COMPLY:


City of Pearl Stormwater Ordinance and Zoning Regulation

NEAREST NAMED RECEIVING STREAM: Richland Creek

IS RECEIVING STREAM ON MISSISSIPPI'S 303(d) LIST OF IMPAIRED WATER  
BODIES? (The 303(d) list of impaired waters and TMDL stream segments may be found on  
MDEQ's web site: <https://www.mdeq.ms.gov/water/surface-water/tmdl/>) ☐ YES ☒ NO

HAS A TMDL BEEN ESTABLISHED FOR THE RECEIVING STREAM SEGMENT? ☒ YES ☐ NO

I certify under penalty of law that this document and all attachments were prepared under my direction or supervision in accordance with a system designed to assure that qualified personnel properly gathered and evaluated the information submitted. Based on my inquiry of the person or persons who manage the system, or those persons directly responsible for gathering the information, the information submitted is, to the best of my knowledge and belief, true, accurate and complete. I am aware that there are significant penalties for submitting false information, including the possibility of fine and imprisonment for knowing violations.

  
Signature (must be signed by coverage recipient)

2/9/2020  
Date

Garrett Wright  
Printed Name

Executive Director, Rankin First EDA  
Title

Please submit this form to: Chief, Environmental Permits Division  
Office of Pollution Control  
MS Department of Environmental Quality  
P.O. Box 2261  
Jackson, Mississippi 39225

Electronically: <https://www.mdeq.ms.gov/construction-stormwater/>

## **ATTACHMENT B**

### **Prime Contractor Certification Form**

# PRIME CONTRACTOR CERTIFICATION

## LARGE CONSTRUCTION GENERAL PERMIT

Coverage No. MSR10 \_\_\_\_\_ County Rankin  
(Fill in your Certificate of Coverage Number and County)



By completing and submitting this form to MDEQ, the prime contractor is certifying that (1) they have operational control over the erosion and sediment control specifications (including the ability to make modifications to such specifications) or (2) they have day-to-day operational control of those activities at the site necessary to ensure compliance with the SWPPP and applicable permit conditions.

The owner(s) of the property and the prime contractor associated with regulated construction activity on the property have joint and severable responsibility for compliance with the permit. Notwithstanding any permit condition to the contrary, the coverage recipient and any person who causes pollution of waters of the state or places waste in a location where they are likely to cause pollution of any waters of the state shall remain responsible under applicable federal and state laws and regulations and applicable permits.

### PRIME CONTRACTOR INFORMATION

PRIME CONTRACTOR CONTACT PERSON: John Blakeney PHONE NUMBER: (601) 433-5932

PRIME CONTRACTOR COMPANY: Cleer Creek Construction LLC

PRIME CONTRACTOR STREET (P.O. BOX): 15878 Hwy. 37

PRIME CONTRACTOR CITY: Taylorsville STATE: Mississippi ZIP: 39168

E-MAIL ADDRESS: \_\_\_\_\_

### OWNER INFORMATION

OWNER CONTACT PERSON: Jake Shelby, P.E. PHONE NUMBER: (601) 939-8737

OWNER COMPANY NAME: Rankin First EDA

### PROJECT INFORMATION

PROJECT NAME: West Rankin Industrial Park Clearing & Grubbing

DESCRIPTION OF CONSTRUCTION ACTIVITY: Clearing and grubbing of wooded areas.

PHYSICAL SITE ADDRESS (If the physical address is not available indicate the nearest named road. For linear projects, indicate the beginning of the project and identify all counties the project traverses.)

STREET: Old Whitfield Road

CITY: Pearl COUNTY: Rankin

I certify that I am the prime contractor for this project and will comply with all the requirements in the above referenced general NPDES permit. I further certify under penalty of law that this document and all attachments were prepared under my direction or supervision in accordance with a system designed to assure that qualified personnel properly gathered and evaluated the information submitted. Based on my inquiry of the person or persons who manage the system, or those persons directly responsible for gathering the information, the information submitted is, to the best of my knowledge and belief, true, accurate and complete. I am aware that there are significant penalties for submitting false information, including the possibility of fine and imprisonment for knowing violations.

  
Prime Contractor Signature<sup>1</sup>

Josie Blakeney  
Printed Name<sup>1</sup>

2/2/26  
Date Signed

Owner/Manager  
Title

<sup>1</sup>This application shall be signed as follows:

- For a corporation, by a responsible corporate officer.
- For a partnership, by a general partner.
- For a sole proprietorship, by the proprietor.
- For a municipal, state or other public facility, by principal executive officer, mayor, or ranking elected official.

This Prime Contractors Certification form shall be submitted to:

Chief, Environmental Permits Division  
MS Department of Environmental Quality, Office of Pollution Control  
P.O. Box 2261  
Jackson, Mississippi 39225

## **ATTACHMENT C**

### **General Permit Conditions**



*State of Mississippi  
Department of Environmental Quality  
Office of Pollution Control*

***Certificate of Permit Coverage***

under Mississippi's Large Construction Storm Water General NPDES Permit

Be it known

**Rankin First Economic Development Authority  
Brandon, Mississippi**

having submitted an acceptable Construction Notice of Intent, is hereby granted this Certificate of Permit Coverage in order to discharge storm water associated with the construction of

**West Rankin Industrial Park, Site Clearing  
Receiving Stream: Richland Creek  
Rankin County**

*Becky Simonson*

Chief, Environmental Permits Division

*Coverage No: MSR109697*

*Date of Coverage: February 4, 2026*

*Date General Permit Expires: January 31, 2027*



## Large Construction Storm Water General Permit Table of Contents

ACT1 (Large Construction) Introduction: Narrative Requirements Introduction.....	1
ACT2 (Large Construction) Permit Applicability and Coverage: Narrative Requirements Permit Area.....	2
Eligibility .....	2
Allowable Non-Storm Water Discharges.....	2
Prohibited Non-Storm Water Discharges.....	3
This Permit Does Not Authorize (storm water discharges not eligible for coverage) .....	4
ACT3 (Large Construction) Obtaining Coverage: Submittal/Action Requirements Obtaining Authorization .....	5
Requiring an Individual Permit or Alternative General Permit.....	6
How to Obtain Recoverage Under the Reissued Permit.....	6
Commercial Development-Individual Lots and Parcels.....	7
Residential Subdivision-Individual Lots.....	7
Residential Subdivision-Expansions.....	7
Residential Subdivision-New Phases and New Owner .....	8
Applicability of Requirements for Individual Lots and Parcels in a Larger Common Plan of Development or Sale.....	8
ACT4 (Large Construction) Notice of Intent (LCNOI): Submittal/Action Requirements Notification Requirements.....	9
Required Submittals with the LCNOI.....	9
Additional Required Submittals May Include.....	9
Additional Notification .....	9
Modification Notification .....	10
Major Modification Notification.....	10
Narrative Requirements Where to Obtain LCNOI Forms.....	11
Where to Submit the LCNOI .....	11
Failure to Notify.....	11
ACT5 (Large Construction) Storm Water Pollution Prevention Plan (SWPPP) Requirements and Content: Narrative Requirements SWPPP Development .....	12
SWPPP Content .....	12
Erosion and Sediment Controls and Soil Stabilization Requirements.....	12
Vegetative Practices.....	14
Structural Practices .....	15
Discharge into an Impaired Receiving Water .....	16
Description of Post Control Measures .....	16
Responsible Parties for Larger Common Plan of Development or Sale.....	16

Large Construction Storm Water General Permit  
Table of Contents

Housekeeping Practices .....	17
Construction Dewatering Activities.....	18
Flocculant Application.....	19
Scaled Site Map .....	20
Implementation Sequence.....	20
Implementation of Controls .....	21
Maintenance and Weekly Inspections.....	21
Non-Storm Water Discharge Management .....	21
Final Stabilization .....	21
Example SWPPPs .....	22
Training Requirements .....	22
ACT6 (Large Construction) Implementation and Inspection Requirements:	
Submittal/Action Requirements	
Implementation Requirements .....	24
Compliance with Local Storm Water Ordinances.....	25
Inspection Requirements.....	26
ACT7 (Large Construction) Storm Water Limitation Requirements:	
Limitation Requirements	
Non-Numeric Limitation Requirements.....	27
ACT8 (Large Construction) Application of Flocculants:	
Narrative Requirements .....	28
ACT9 (Large Construction) Record Keeping and Reporting Requirements:	
Record Keeping Requirements	
Retention of Records.....	29
Submittal/Action Requirements	
Suspension of Weekly Inspections and Monthly Record Keeping .....	30
ACT10 (Large Construction) Termination of Permit Coverage:	
Submittal/Action Requirements .....	31
ACT11 (Large Construction) Standard Requirements Applicable To All Water Permits	
Narrative Requirements	
Duty to Comply .....	32
Duty to Mitigate.....	32
Duty to Provide Information .....	32
Property Rights .....	32
Severability .....	32
Oil and Hazardous Substance Liability .....	32
Signatory Requirements.....	33
Duly Authorized Representative.....	34
Changes to Authorization.....	34
Certification .....	34

## Large Construction Storm Water General Permit

Proper Operation and Maintenance.....	35
---------------------------------------	----

### Table of Contents

Monitoring and Records .....	35
Bypass Prohibition .....	36
Upset Conditions.....	36
Inspection and Entry .....	37
Permit Actions .....	37
Noncompliance Reporting .....	38
Reopener Clause .....	38
Permit Modification .....	38
Transfers .....	38
Continuation of Expired General Permit.....	39
Falsifying Reports .....	39
Civil and Criminal Liability.....	39
ACT12 (Large Construction) Definitions:.....	40

Large Construction Storm Water General Permit

**THIS PAGE WAS INTENTIONALLY LEFT BLANK**

## ACT1 (LCGP) Introduction:

### Narrative Requirements:

Condition No.	Condition
T-1	The Large Construction General Permit (LCGP) authorizes storm water discharges from construction activities five (5) acres or greater or less than five (5) acres if part of a "larger common plan of development or sale" (see Definitions). Storm water discharges that enter waters of the State or storm water conveyance systems leading to waters of the State are subject to regulation and compliance with the conditions set forth in this permit. This permit also authorizes storm water discharges from any other construction activity designated by the Executive Director based on the potential for contribution to an excursion of a water quality standard or for significant contribution of pollutants to waters of the State. This permit replaces the previous Large Construction General Permit that expired on December 31, 2021. [11 Miss. Admin. Code Pt. 6, R. 1]

## ACT2 (LCGP) Permit Applicability and Coverage:

### Narrative Requirements:

Condition No.	Condition
T-1	<p>PERMIT AREA:</p> <p>The Large Construction General Permit covers all areas of the State of Mississippi. [11 Miss. Admin. Code Pt. 6, R. 1]</p>
T-2	<p>ELIGIBILITY:</p> <p>(1) Discharges composed entirely of storm water and allowable non-storm water discharges (see ACT5, T-14 for additional requirements) from construction activity, including clearing, grading, grubbing, excavating and other land disturbing activities of five (5) or more acres or less than five (5) acres if part of a "larger common plan of development or sale" (see Definitions).</p> <p>(2) Allowable Non-Storm Water Discharges:</p> <p>(A) Discharges from actual fire-fighting activities</p> <p>(B) Fire hydrant flushing</p> <p>(C) Water used to control dust</p> <p>(D) Potable water sources including uncontaminated water line flushing</p> <p>(E) Routine external building wash down that does not use detergents</p> <p>(F) Pavement wash waters where spills or leaks of toxic or hazardous materials have not occurred (unless all spilled material has been removed) and where detergents are not used</p> <p>(G) Uncontaminated air conditioning or compressor condensate</p> <p>(H) Uncontaminated ground water or spring water</p> <p>(I) Foundation or footing drains where flows are not contaminated with process materials such as solvents</p> <p>(J) Landscape irrigation</p> <p>(K) Water used to wash vehicles, wheel wash water and other wash waters where detergents are not used.</p> <p>(L) Construction dewatering water discharged in accordance with ACT5, T-11. [11 Miss. Admin. Code Pt. 6, R. 1]</p>

**ACT2 (continued):****Narrative Requirements:**

Condition No.	Condition
T-3	<p data-bbox="222 605 512 633">ELIGIBILITY (continued):</p> <p data-bbox="222 662 701 690">(3) Prohibited Non-Storm Water Discharges:</p> <ul style="list-style-type: none"> <li data-bbox="222 719 1136 747">(A) Wastewater from washout of concrete (unless managed by an appropriate control)</li> <li data-bbox="222 751 1602 779">(B) Wastewater from washout and cleanout of stucco, paint, form release oils, curing compounds and other construction materials</li> <li data-bbox="222 784 1205 812">(C) Fuels, oils, or other pollutants used in vehicle and equipment operation and maintenance</li> <li data-bbox="222 816 877 844">(D) Soaps or solvents used in vehicle and equipment washing</li> <li data-bbox="222 849 915 876">(E) Wastewater from sanitary facilities, including portable toilets</li> <li data-bbox="222 881 884 909">(F) Contaminated discharge waters from dewatering activities</li> <li data-bbox="222 914 898 941">(G) Toxic or hazardous substances from a spill or other release.</li> </ul> <p data-bbox="222 963 1963 1201">(4) A project is eligible for coverage under this general permit for discharges of pollutants of concern to water bodies for which there is a Total Maximum Daily Load (TMDL) established or approved by the Environmental Protection Agency (EPA) if measures and controls are incorporated that are consistent with the assumptions and requirements of such TMDL. To be eligible for coverage under this general permit, the project must incorporate in the Storm Water Pollution Prevention Plan (SWPPP) and/or effluent limitation any conditions applicable to any discharge(s) necessary for consistency with the assumptions and requirements of such TMDL. If, after coverage issuance, a specific wasteload allocation is established that would apply to the project's discharge, the project owner/operator must determine and implement all of the steps necessary to meet that allocation within three (3) months from the final TMDL approval date. MDEQ's approved TMDL list may be found at the link listed in paragraph (5) below. In addition, MDEQ's Planning &amp; Design Manual for the Control of Erosion, Sediment and Storm Water identifies specific controls that may be used to address consistency with any applicable TMDLs. The manual can be found at: <a href="http://www.mdeq.ms.gov/construction-stormwater/">www.mdeq.ms.gov/construction-stormwater/</a>)</p> <p data-bbox="222 1230 1963 1380">(5) A project is eligible for coverage under this general permit for discharges of storm water to impaired water bodies on MDEQ's 303(d) list, provided best management practices (BMPs) are employed that prohibit further impairment of the designated and/or existing beneficial uses in the receiving water body. To be eligible for coverage under this general permit, the owner/operator must indicate on the LCNOI that the project discharges to a 303(d) listed receiving water and incorporate appropriate BMPs in its SWPPP. MDEQ's 303(d) list of impaired water bodies may be found on MDEQ's website at: <a href="https://opcgis.deq.state.ms.us/tmdls/">https://opcgis.deq.state.ms.us/tmdls/</a>). [11 Miss. Admin. Code Pt. 6, R. 1]</p>

**ACT2 (continued):****Narrative Requirements:**

Condition No.	Condition
T-4	<p data-bbox="222 574 688 602">THIS PERMIT DOES NOT AUTHORIZE:</p> <p data-bbox="222 634 1978 841">(1) Discharges which result in violation of State Water Quality Standards. Whenever a discharge authorized under this permit is later determined to cause or have the reasonable potential to cause or contribute to the violation of an applicable water quality standard, MDEQ will notify the regulated entity of such water quality violation(s) in writing and will provide the information used by MDEQ to make this determination. The regulated entity must take all necessary actions required to ensure future discharges do not cause or contribute to the violation of a water quality standard. If such violations remain or re-occur, then additional measures, such as the addition of Best Management Practices (BMPs) and modification of the SWPPP will be submitted to MDEQ for approval or the requirement to obtain an individual permit, may be required by the Permit Board. Compliance with this requirement does not preclude any enforcement activity as provided by the Clean Water Act for the underlying violation.</p> <p data-bbox="222 873 1978 959">(2) Activities that affect waters of the U.S., including wetlands, without obtaining the necessary U.S. Army Corps of Engineers (COE) approval. This may include a COE individual Section 404 permit or coverage under a COE nationwide or general permit. Appropriate documentation must be submitted with the Large Construction Notice of Intent (LCNOI). [11 Miss. Admin. Code Pt. 6, R. 1]</p>
T-5	<p data-bbox="222 992 1978 1164">(3) Discharges or discharge-related activities that are likely to jeopardize the continued existence of any species that is listed as endangered or threatened under the Endangered Species Act (ESA) or result in the adverse modification or destruction of habitat that is designated as critical under the ESA. Coverage under this permit is available only if the regulated entity's storm water discharges, allowable non-storm water discharges, and discharge-related activities are not likely to jeopardize the continued existence of any species that is listed as endangered or threatened ("listed") under the ESA or result in the adverse modification or destruction of habitat that is designated as critical under the ESA ("critical habitat"). Submission of a signed LCNOI, or County Utility Authority approval, if applicable, will be deemed to constitute the regulated entity's certification of eligibility. [11 Miss. Admin. Code Pt. 6, R. 1]</p>



**ACT3 (LCGP) Obtaining Coverage:****Submittal/Action Requirements:**

Condition No.	Condition
S-1	<p data-bbox="222 574 600 602"><b>OBTAINING AUTHORIZATION:</b></p> <p data-bbox="222 634 1961 781">(1) Owners and/or operators (see Definitions) desiring coverage associated with large construction activity under this permit must submit a Large Construction Notice of Intent (LCNOI) and other required submittals in accordance with the requirements of this permit. For construction activities, the operator is typically the Prime Contractor. However, if the prime contractor does not meet the definition of operator, then the owner must apply. The owner may submit the LCNOI and later, prior to actual construction, the operator may submit the Prime Contractor Certification accepting joint and severable responsibility for applicable permit conditions.</p> <p data-bbox="222 846 2016 1057">Where there are multiple operators associated with the same project, all operators must obtain permit coverage. Subcontractors generally are not considered operators for the purposes of this permit. The applicant shall identify the construction support activities for their project in the SWPPP. If the operator of a construction support activity is different than the operator of the main site, that operator must abide by the approved SWPPP. If a SWPPP was prepared under a previous version of this permit, the operator must review and update the SWPPP to ensure that this permit's requirements are addressed prior to submitting separate approved MDEQ authorization forms for coverage under this permit. Unless receiving prior MDEQ approval, projects with multiply operators shall submit a group SWPPP covering all aspects of construction activities in accordance to ACT5 of this permit. Regardless of whether there is a group SWPPP or multiple individual SWPPPs, each operator is responsible for compliance with the permit's terms and conditions.</p> <p data-bbox="222 1089 1938 1146">Owners, developers and prime contractors that meet the definition of the operator shall apply for permit coverage on the same NOI, if possible. The division may accept separate NOI forms from different operators for the same construction site when warranted.</p> <p data-bbox="222 1211 1932 1325">The owner(s) of the property and the operator(s) associated with the regulated construction activity on the property have joint and severable responsibility for compliance with the permit. Notwithstanding any permit condition to the contrary, the coverage recipient and any person who causes pollution of waters of the state or places waste in a location where they are likely to cause pollution, shall remain responsible under applicable federal and state laws and regulations, and applicable permits.</p> <p data-bbox="222 1357 1971 1385">(2) Upon review of the LCNOI, the MDEQ staff may require additional information (including modification of the SWPPP, which could require the implementation</p>

## Submittal/Action Requirements:

---

Condition

No.

Condition

---

of additional controls), recommend that coverage not be granted and/or that an alternate permit would be more appropriate. The MDEQ staff recommendations may be brought before the Mississippi Environmental Quality Permit Board (Permit Board) for review and consideration at a regularly scheduled meeting or at a special meeting at its discretion.

(3) Coverage under this permit will not be granted until all other required MDEQ permits, certifications and approvals are satisfactorily addressed.

(4) Owners or operators are authorized to discharge storm water associated with large construction activity under the terms and conditions of this permit only upon receipt of written notification of approval of coverage by the Permit Board staff. Discharge of storm water without written notification of coverage under this permit or issuance of an individual National Pollutant Discharge Elimination System (NPDES) Storm Water Permit is a violation of the Mississippi Air and Water Pollution Control Law 49-17-29(2)(b). [11 Miss. Admin. Code Pt. 6, R. 1]

### S-2 REQUIRING AN INDIVIDUAL PERMIT OR ALTERNATIVE GENERAL PERMIT:

(1) The Permit Board may require any coverage recipient to apply for and obtain either an individual or an alternative general NPDES permit. Any interested person may petition the Permit Board to take action under this paragraph. The Permit Board may require any coverage recipient to apply for an individual NPDES permit only if the owner or operator has been notified in writing. Such notice shall include reasons for this decision, an application form and a filing deadline. The Permit Board may grant additional time at its discretion, upon request. If a coverage recipient fails to submit a requested application in a timely manner, coverage under this permit will automatically terminate at the end of the day specified for application submittal.

(2) Any coverage recipient may request to be excluded from permit coverage by applying for an individual permit or coverage under another general permit. The applicant shall submit an individual application (EPA Forms 1 and 2F along with the narrative requirements of 40 CFR 122.26(c)(1)(ii)) or the appropriate Notice of Intent.

(3) Coverage under this permit is automatically terminated on the issuance date of the respective alternative individual permit or general permit coverage. When the request for an alternative individual permit or general permit coverage is denied, coverage under this permit continues unless terminated by the Permit Board. [11 Miss. Admin. Code Pt. 6, R. 1]

### S-3 HOW TO OBTAIN RECOVERY UNDER THE REISSUED PERMIT:

If reissuance of this permit does not occur before its expiration date, continued coverage under this permit will be allowed until the effective date of the reissued general permit coverage. Once the Large Construction General Permit is reissued, active coverage recipients will receive a Recovery Form with a Letter of Instruction. If a coverage recipient wishes to be covered by the reissued Large Construction General Permit, the Recovery Form must be completed and returned to the MDEQ in accordance with the provisions of the Letter of Instruction. Resubmittal of the Storm Water Pollution Prevention Plan (SWPPP) is not required if

**ACT3 (LCGP) Obtaining Coverage:****Submittal/Action Requirements:**

Condition	Condition
No.	
S-4	<p><b>COMMERCIAL DEVELOPMENT - INDIVIDUAL LOTS OR PARCELS:</b></p> <p>Individual lots or parcels within a commercial development that are part of the "larger common plan of development or sale" (see Definitions) are regulated regardless of size or owner. If the owner or developer obtains construction permit coverage for a development then sells lots or parcels within that development, permit coverage must continue on those areas under new ownership. The original coverage recipient is responsible for all construction activities until individual lots or parcels within the development are sold to others and the new owner submits a LCNOI (regardless of size) and obtains coverage under Mississippi's Large Construction General Permit or applies for an individual permit. [11 Miss. Admin. Code Pt. 6, R. 1]</p>
S-5	<p><b>RESIDENTIAL SUBDIVISION - INDIVIDUAL LOTS:</b></p> <p>Individual lots within a residential subdivision that are part of the "larger common plan of development or sale" (see Definitions) are regulated regardless of size or ownership. If the owner or developer obtains construction permit coverage for a residential development, then sells individual lots within that development, permit coverage shall continue on those lots under new ownership. The original coverage recipient may retain responsibility for permit compliance, or the new owner (purchaser) or operator shall satisfy authorization requirements by:</p> <ul style="list-style-type: none"> <li>(1) Completing and submitting the MDEQ Registration Form (see Large Construction Forms Package) and developing and implementing a sediment and erosion control plan for the specific lot(s), or</li> <li>(2) Completing and submitting for approval from the MDEQ, a LCNOI and required documents, or</li> <li>(3) Applying for an individual storm water permit.</li> </ul> <p>The owner or developer (seller) is responsible for providing the new owner or operator (purchaser) with a copy of the MDEQ Registration Form and a copy of the Large Construction General Permit. These documents, as well as the individual application, may be found on MDEQ's website at <a href="http://www.mdeq.ms.gov/construction-stormwater/">www.mdeq.ms.gov/construction-stormwater/</a> or by calling 601-961-5171. [11 Miss. Admin. Code Pt. 6, R. 1]</p>
S-6	<p><b>RESIDENTIAL SUBDIVISION - EXPANSIONS:</b></p> <p>For subsequent phases, expansions and major modifications of subdivision development that are proposed but were not included in the original SWPPP, the</p>

**ACT3 (continued):**

**Submittal/Action Requirements:**

Condition No.	Condition
	coverage recipient shall submit to MDEQ the Major Modification Form (see Large Construction Forms Package). [11 Miss. Admin. Code Pt. 6, R. 1]
S-7	<p><b>RESIDENTIAL SUBDIVISION - NEW PHASES AND NEW OWNER:</b></p> <p>If an individual, other than the original developer (coverage recipient), proposes construction of a new phase of an existing subdivision and the proposed phase was not included in the initial submittal of the LCNOI, the new owner or operator must apply for separate permit coverage. [11 Miss. Admin. Code Pt. 6, R. 1]</p>
S-8	<p><b>APPLICABILITY OF REQUIREMENTS FOR INDIVIDUAL LOTS AND PARCELS IN A LARGER COMMON PLAN OF DEVELOPMENT OR SALE:</b></p> <p>The original coverage recipient remains responsible for compliance with this general permit until a new owner or operator satisfies the requirements of S-4 and S-5 of this ACT. [11 Miss. Admin. Code Pt. 6, R. 1]</p>

# **ACT4 (LCGP) Large Construction Notice of Intent (LCNOI):**

## **Submittal/Action Requirements:**

Condition No.	Condition
S-1	<p><b>NOTIFICATION REQUIREMENTS:</b></p> <p>Persons desiring coverage for a storm water discharge associated with construction activity under this general permit must submit a LCNOI Form with the required submittals. Discharge of storm water without written notification of coverage under this permit or issuance of an individual National Pollutant Discharge Elimination System (NPDES) Storm Water Permit is a violation of the Mississippi Air and Water Pollution Control Law 49-17-29(2)(b). [11 Miss. Admin. Code Pt. 6, R. 1]</p>
S-2	<p><b>REQUIRED SUBMITTALS WITH THE LCNOI:</b></p> <p>Submittals required with a completed LCNOI include a site-specific SWPPP associated with the construction activities, a United States Geological Survey (USGS) quad map, or color photocopy of the quad map, extending at least 1/2 mile beyond the facility property boundaries with the site location outlined or highlighted. [11 Miss. Admin. Code Pt. 6, R. 1]</p>
S-3	<p><b>ADDITIONAL SUBMITTALS MAY INCLUDE THE FOLLOWING:</b></p> <p>(1) Appropriate Section 404 documentation from U.S. Army Corps of Engineers,</p> <p>(2) Appropriate documentation concerning future disposal of sanitary sewage and sewage collection system construction,</p> <p>(3) Appropriate documentation from the MDEQ Office of Land &amp; Water concerning dam construction and low flow requirements, and/or</p> <p>(4) Approval for wastewater for all residential and commercial subdivisions in the form of a signed certification by the official responsible for the wastewater treatment facility that will serve the proposed project.</p> <p>(5) Appropriate plans for affecting waters of the State of Mississippi. [11 Miss. Admin. Code Pt. 6, R. 1]</p>
S-4	<p><b>ADDITIONAL NOTIFICATION:</b></p> <p>The covered owner or operator must notify the Permit Board at least 30 days before any planned changes of ownership or whenever there are any changes in</p>

**ACT4 (continued):****Submittal/Action Requirements:**

Condition No.	Condition
	information previously submitted in the LCNOI Form. [11 Miss. Admin. Code Pt. 6, R. 1]
S-5	<p data-bbox="222 597 617 621">MODIFICATION NOTIFICATION:</p> <p data-bbox="222 656 1031 680">The coverage recipient must notify the Permit Board at least 30 days before:</p> <ul style="list-style-type: none"> <li data-bbox="222 714 1142 738">(1) Any planned changes in project operations that may affect storm water discharges,</li> <li data-bbox="222 773 669 797">(2) Any planned changes of ownership, or</li> <li data-bbox="222 831 1341 855">(3) Any changes in information previously submitted in the LCNOI. [11 Miss. Admin. Code Pt. 6, R. 1]</li> </ul>
S-6	<p data-bbox="222 893 716 917">MAJOR MODIFICATION NOTIFICATION:</p> <ul style="list-style-type: none"> <li data-bbox="222 951 1944 1005">(1) The following activities require the submittal of a Major Modification Form. This form can be found in the Large Construction Forms Package, which can be obtained from MDEQ at the address given in T-2 of this ACT or from the MDEQ website at <a href="http://www.mdeq.ms.gov/construction-stormwater/">www.mdeq.ms.gov/construction-stormwater/</a>.</li> <li data-bbox="222 1039 1583 1063">(A) SWPPP details have been developed and are ready for MDEQ review for subsequent phases of an existing, covered project.</li> <li data-bbox="222 1097 1944 1151">(B) Footprint identified in the original LCNOI is proposed to be enlarged (a modified SWPPP and an updated USGS topographic map must be submitted with the Major Modification Form).</li> <li data-bbox="222 1185 1856 1239">(2) Coverage recipients are authorized to implement the proposed modifications, under the conditions of the General Permit, only upon receipt of written notification of approval by the MDEQ.</li> <li data-bbox="222 1273 1961 1326">(3) Proposed changes may require termination of the General Permit coverage and/or application for an individual or alternative general permit. [11 Miss. Admin. Code Pt. 6, R. 1]</li> </ul>

**ACT4 (continued):****Narrative Requirements:**

Condition No.	Condition
T-1	<p>WHERE TO OBTAIN LCNOI FORMS:</p> <p>LCNOI Forms may be obtained from the MDEQ at the address shown below or by calling 601-961-5171. LCNOI Forms, as well as the general permit and guidance manual, may be found on the MDEQ web site at <a href="http://www.mdeq.ms.gov/construction-stormwater/">www.mdeq.ms.gov/construction-stormwater/</a>. Coverage under this permit will not be granted until all other required MDEQ permits, certifications and approvals are satisfactorily addressed. [11 Miss. Admin. Code Pt. 6, R. 1]</p>
T-2	<p>WHERE TO SUBMIT THE LCNOI:</p> <p>Complete and appropriately signed LCNOI Forms must be submitted to:</p> <p>Chief, Environmental Permits Division Mississippi Department of Environmental Quality Office of Pollution Control P.O. Box 2261 Jackson, Mississippi 39225</p> <p>For priority or overnight deliveries, the physical address is:</p> <p>515 East Amite Street Jackson, Mississippi 39201.</p> <p>In addition to mailing paper, electronic submittals are also recommended. Until December 21, 2025, a courtesy copy may be submitted electronically by: <a href="https://www.mdeq.ms.gov/construction-stormwater/">https://www.mdeq.ms.gov/construction-stormwater/</a>. After December 21, 2025, these forms shall be submitted electronically using the above web address. [11 Miss. Admin. Code Pt. 6, R. 1]</p>
T-3	<p>FAILURE TO NOTIFY:</p> <p>Persons who discharge storm water associated with Large Construction activity to waters of the State without an NPDES permit are in violation of the Mississippi Air and Water Pollution Control Law 49-17-29(2)(b). [11 Miss. Admin. Code Pt. 6, R. 1]</p>

**ACT5 (LCGP) Storm Water Pollution Prevention Plan (SWPPP):****Narrative Requirements:**

Condition No.	Condition
T-1	<p data-bbox="222 602 516 626"><b>SWPPP DEVELOPMENT:</b></p> <p data-bbox="222 664 1969 813">A site-specific SWPPP shall be developed requiring the design, installation, implementation and maintenance of effective pollution prevention measures by each owner or operator subject to this permit. A SWPPP shall be prepared in accordance with sound engineering practices and shall identify potential sources of pollution, which may reasonably be expected to affect the quality of storm water discharges associated with construction activity. The SWPPP shall describe and ensure the implementation of specific best management practices for the project site, which will reduce pollutants in storm water discharges and assure compliance with the terms and conditions of this permit. [11 Miss. Admin. Code Pt. 6, R. 1]</p>
T-2	<p data-bbox="222 841 443 865"><b>SWPPP CONTENT:</b></p> <p data-bbox="222 898 953 922"><b>Erosion and Sediment Controls and Soil Stabilization Requirements:</b></p> <p data-bbox="222 959 1969 1076">The SWPPP shall list and describe site-specific controls appropriate for the construction activities as well as the procedures for implementing such controls. Controls shall be designed to retain sediment on-site and to minimize the discharge of pollutants. If any of the below controls cannot be implemented on the project site, the SWPPP must include written justification as to why site-specific constraints and/or costs make the control(s) infeasible. At a minimum, such controls must be designed, installed and maintained to:</p> <ol data-bbox="222 1109 1927 1343" style="list-style-type: none"> <li data-bbox="222 1109 1125 1133">(1) Control storm water volume and velocity within the site to minimize soil erosion;</li> <li data-bbox="222 1170 1927 1227">(2) Control storm water discharges, including both peak flow rates and total storm water volume, to minimize channel and stream bank erosion and scour in the immediate vicinity of discharge points;</li> <li data-bbox="222 1260 963 1284">(3) Minimize the amount of soil exposed during construction activity;</li> <li data-bbox="222 1317 1087 1343">(4) Minimize the disturbance of steep slopes. [11 Miss. Admin. Code Pt. 6, R. 1]</li> </ol>



**ACT5 (continued):****Narrative Requirements:**

Condition No.	Condition
T-3	<p>SWPPP CONTENT (continued):</p> <p>(5) Minimize sediment discharges from the site. The design, installation and maintenance of erosion and sediment controls must address factors such as the amount, frequency, intensity and duration of precipitation, the nature of resulting storm water runoff, and soil characteristics, including the range of soil particle sizes expected to be present on the site;</p> <p>(6) Provide and maintain a 50-foot undisturbed natural buffer around waters of the United States; or provide and maintain an undisturbed natural buffer that is less than 50 feet and is supplemented by additional erosion and sediment controls which in combination achieves the sediment load reduction equivalent to a 50-foot undisturbed natural buffer. Direct storm water to vegetated areas and maximize storm water infiltration to reduce pollutant discharges, unless infeasible; and</p> <p>(7) Minimize soil compaction and, unless infeasible, preserve topsoil;</p> <p>(8) Direct storm water to vegetated areas, brush barriers, silt fences, check dams, etc. to aid in the filtration, infiltration, velocity reduction and diffusion of the discharge;</p> <p>(9) Transport runoff down steep slopes through lined channels or piping;</p> <p>(10) Minimize the amount of cut and fill;</p> <p>(11) Minimize off-site vehicle tracking of sediments; and</p> <p>(12) Minimize the discharge of pollutants from equipment and vehicle washing, wheel wash water, concrete wash water, and other wash waters. Wash waters must be treated in a sediment basin or alternative control that provides equivalent or better treatment prior to discharge.</p> <p>(13) Provide a description of any discharge associated with industrial activity other than construction stormwater that originates on site and the location of that activity and its permit number.</p> <p>(14) Provide a description of stormwater sources from areas other than construction and a description of controls and measures that will be implemented at those sites.</p>

## Narrative Requirements:

Condition	Condition
No.	
T-4	<p>(15)When permanent or temporary structures will be placed in Waters of the State, MDEQ may require the applicant to address any issues related to Mississippi Antidegradation Plan in the SWPPP during the review of the LCNOI rather than requiring a separate LCNOI or other state required permits. This provision will only apply to activities that will not require a 404 permit or a 401 certification. [11 Miss. Admin. Code Pt. 6, R. 1]</p> <p>The number and type of BMPs included in the SWPPP must reflect the specific conditions of the construction site. An effective SWPPP includes a combination of BMPs that are designed to work together. A combination of BMPs is listed below and must be included as minimum components of a SWPPP. These controls must be in accordance with the design standards set forth in the most current edition of Mississippi's "Erosion Control, Sediment Control and Stormwater Management on Construction Sites and Urban Areas" found at <a href="http://www.mdeq.ms.gov/construction-stormwater/">www.mdeq.ms.gov/construction-stormwater/</a> or other accredited and approved manual of design.</p> <p>(1) Vegetative Practices shall be designed to preserve existing vegetation where feasible and initiate vegetative stabilization measures after land disturbing activities. Such practices may include, but not limited to, temporary seeding, permanent seeding, mulching, sod stabilization, vegetative buffer strips, tree protection and topsoil preservation.</p> <p>Soil stabilization-vegetative stabilization measures must be initiated whenever any clearing, grading, grubbing, excavating or other land disturbing activities have temporarily or permanently ceased on any portion of the site and will not resume for a period of fourteen (14) calendar days or more. The appropriate temporary or permanent vegetative practices shall be initiated immediately. For purposes of this permit, "immediately" is interpreted to mean no later than the next work day.</p> <p>If you are unable to meet the deadlines in the previous paragraph due to circumstances beyond your control, and you are using vegetative cover for temporary or permanent stabilization, you may comply with the following stabilization deadlines instead:</p> <p>(A) Immediately initiate, and within 14 calendar days complete, the installation of temporary non-vegetative stabilization measures to prevent erosion;</p> <p>(B) Complete all soil conditioning, seeding, watering or irrigation installation, mulching, and other required activities related to the planting and initial establishment of vegetation as soon as conditions or circumstances allow it on the site; and,</p> <p>(C) Document the circumstances that prevent you from meeting the deadlines required and the schedule you will follow for initiating and completing stabilization. [11 Miss. Admin. Code Pt. 6, R. 1]</p>

**ACT5 (continued):****Narrative Requirements:**

Condition No.	Condition
T-5	<p>Specific BMPs that must be included, unless infeasible (see Definitions) are:</p> <p>(A) Buffer zones (see Definitions) shall be maintained between land-disturbing activities and perennial water bodies. A minimum 150-foot buffer zone is recommended; however, if a 150-foot buffer zone cannot be met, the requirements outlined in ACT5, T-3(6) shall be followed.</p> <p>(B) Topsoil should be stockpiled and used in areas that will be re-vegetated. When final grade is reached it should be distributed to a minimum depth of 2 inches on 3:1 slopes and 4 inches on flatter slopes. The permittee shall locate the piles outside of any natural buffers established and away from any stormwater conveyances, drain inlets, and areas where stormwater flow is concentrated. The permittee shall install a sediment barrier along all downgradient perimeter areas. The permittee is prohibited from hosing down or sweeping soil or sediment accumulated on pavement or other impervious surfaces into any stormwater conveyance, storm drain inlet, or Waters of the State.</p> <p>(C) Heavy equipment use in areas to be re-vegetated should be avoided. If compaction cannot be avoided, the top 4 inches of the soil bed should be tilled before re-vegetation. Any necessary fertilizer or other soil amendments should be added during the tilling process.</p> <p>The SWPPP must contain written justification as to why any of these specific controls were not deemed feasible. [11 Miss. Admin. Code Pt. 6, R. 1]</p>
T-6	<p>(2) Structural practices shall divert flows from exposed soils, store flows or otherwise limit runoff from exposed areas. Such practices may include, but are not limited to, construction entrance/exit, silt fences, earth dikes, brush barriers, drainage swales, check dams, subsurface drains, pipe slope drains, level spreaders, drain inlet protection, outlet protection, detention/retention basins, sediment traps, temporary sediment basins or equivalent sediment controls.</p> <p>Specific practices that must be included, unless infeasible, are:</p> <p>Sediment basins are to be situated outside waters of the State and any natural buffers to be established. Design the basin to avoid collecting water from wetlands. Use erosion controls and velocity dissipation devices to prevent erosion at the inlets and outlets.</p> <p>(A) For drainage locations (a drainage point at boundary of land disturbing activity) that serve an area with ten (10) or more disturbed acres at one time, a temporary (or permanent) sediment basin providing at least 3,600 cubic feet (133 cubic yards) of storage per acre drained shall be provided until final stabilization of the site. Sediment basins must be installed before initial site grading and utilize outlet structures that withdraw water from the surface and that are designed for a minimum 2-year, 24-hour storm event. If flocculants are being introduced, sediment basins must be downstream of the point of introduction and include baffles to increase sediment removal efficiency and turbidity reduction. The capacity of the sediment basin, acreage draining to sediment basin, location on the plan, as well as the diagram of outflow structure shall be provided.</p> <p>(B) Due to the unique characteristics of linear projects (see Definitions), such as the lack of space within project rights of way and having multiple, distributed</p>

**ACT5 (continued):****Narrative Requirements:**

Condition No.	Condition
	<p>discharge points, sedimentation basins are not common practices. Therefore, MDEQ will not require the use of sedimentation basins for linear projects disturbing ten (10) or more acres at one time. Appropriate alternate structural practices, such as sediment traps and check dams, must be included in the SWPPP if sediment basins are deemed infeasible.</p> <p>(C) Design of temporary (or permanent) sediment basins, if used, shall provide at least 3600 cubic feet (133 cubic yards) of storage per acre drained and shall be provided until final stabilization of the site. Sediment basins must be installed before major site grading and utilize outlet structures that withdraw water from the surface. The capacity of the sediment basin, acreage draining to sediment basin, location on the plan, as well as the diagram of outflow structure shall be provided. [11 Miss. Admin. Code Pt. 6, R. 1]</p>
T-7	<p>(D) Steep Slopes (see Definition) that cannot be avoided must have, at a minimum, silt fences or equivalent sediment controls for all down slope boundaries (and for those side slope boundaries deemed appropriate by individual site conditions), unless a sediment basin providing storage for a calculated volume of runoff from a 2-year, 24-hour storm or 3,600 cubic feet of storage per acre drained is provided.</p> <p>(E) Construction entrances/exits shall be installed wherever traffic will be leaving a construction site and moving directly onto a paved public road. Restrict vehicle to properly designed exit points. Use appropriate stabilization techniques at all points that exit onto paved roads. Implement additional track-out controls as necessary to ensure that sediment removal occurs prior to vehicle exit. Where sediment has been tracked-out from the site onto paved roads, sidewalks, or other paved areas outside the site, remove deposited sediment “immediately” by the end of the next work day. Remove the track-out by sweeping, shoveling, or vacuuming these surfaces, or by similarly effective means of sediment removal. Hosing or sweeping track-out sediment into any stormwater conveyance, storm drain inlet, or Waters of the State is prohibited.</p> <p>(F) Storm Drain Inlets-Inlets that could receive storm water from construction activities shall be protected by surrounding or covering with a filter material until final stabilization has been achieved. Clean, or remove and replace, the protection measure as sediment accumulates, the filter becomes clogged, and/or performance is compromised. Where there is evidence of sediment accumulation adjacent to inlet protection measure, remove the deposited sediment “immediately” by the end of the next work day. [11 Miss. Admin. Code Pt. 6, R. 1]</p>
T-8	<p>(G) Perimeter Controls-Natural areas shall be maintained and supplemented with silt fence and fiber rolls around project perimeter. If not feasible to maintain natural areas, a silt fence or similar controls, such as fiber rolls, are sufficient.</p> <p>(H) Phasing-Schedule or sequence construction activities to concentrate work in certain areas to minimize the amount of soil that is exposed at one time. Construction shall be phased to keep the total disturbed area less than fifty (50) acres at one time, in order to minimize erosion and limit sedimentation. The permittee can have additional disturbance with provided justification and additional controls to minimize erosion and sedimentation. With written justification of demonstrating why the project requires fifty (50) acres or more of disturbed area and additional controls to minimize erosion and sedimentation, the permittee may be allowed to disturb additional areas.</p>

**ACT5 (continued):****Narrative Requirements:**

Condition	
No.	Condition
	The SWPPP must contain written justification as to why any of these specific controls were not deemed feasible. [11 Miss. Admin. Code Pt. 6, R. 1]
T-9	<p>(3) Facilities discharging into impaired receiving waters (i.e., receiving stream segments, which are listed on MDEQ's 303(d) List of Impaired Waters, or segments for which a Total Daily Maximum Load (TMDL) has been approved) must identify the pollutant of concern(s) for the receiving stream in the SWPPP. If applicable, the SWPPP shall describe how the selected BMPs will ensure that discharges from the site (if applicable) will not cause or contribute to exceedances of the water quality standards in the receiving stream. Additional controls may be required.</p> <p>(4) A description of any post-construction control measures. Post-construction control measures should be installed as necessary, to control pollutants in storm water after construction is complete. Post-construction controls must be in accordance with the design standards set forth in the most current edition of Mississippi's "Erosion Control, Sediment Control and Stormwater Management on Construction Sites and Urban Areas" found at: <a href="http://www.mdeq.ms.gov/construction-stormwater/">www.mdeq.ms.gov/construction-stormwater/</a>. These controls include, but are not limited to, one or more of the following: on-site infiltration of runoff, flow attenuation using open vegetated swales, exfiltration trenches and natural depressions, constructed wetlands and retention/detention structures. Where needed, velocity dissipation devices shall be placed at detention or retention pond outfalls and along the outfall channel to provide for a non-erosive flow. Restrict vehicle and equipment use in these locations to avoid soil compaction. Before seeding or planting areas of exposed soil that have been compacted, use techniques that rehabilitate and condition the soils as necessary to support vegetative growth. The permittee is encouraged to design the site, the erosion prevention measures, sediment control measures, and other site management practices with consideration of minimizing stormwater runoff, both during and following construction, including facilitating the use of low-impact development (LID) and green infrastructure.</p> <p>(5) Proposed responsible parties (original coverage recipient or new owner or operator) for individual lots or out-parcels that are part of a larger common plan of development or sale. If permit responsibility is retained by the original coverage recipient, a narrative description of sediment and erosion controls for subdivision lots is acceptable. Out-parcels in commercial developments must be included in the scaled site map referenced below. [11 Miss. Admin. Code Pt. 6, R. 1]</p>
T-10	<p>Housekeeping Practices:</p> <p>The owner or operator shall design, install, implement and maintain practices appropriate to prevent pollutants from entering storm water from construction sites because of poor housekeeping. These practices must be listed in the SWPPP and located on the site map.</p> <p>The owner or operator shall: (1) minimize the exposure of building materials, building products, construction wastes, trash, landscape materials, fertilizers, pesticides, herbicides, detergents, sanitary waste and other materials present on the site to precipitation and to stormwater; (2) minimization of exposure is not required in cases where the exposure to precipitation and to stormwater will not result in a discharge of pollutants, or where exposure of a specific material or product poses little risk of</p>

**ACT5 (continued):****Narrative Requirements:**

Condition	Condition
No.	<p>stormwater contamination (such as final products and materials intended for outdoor use); (3) minimize the discharge of pollutants from spills and leaks and implement chemical spill and leak prevention and response procedures.</p> <p>The owner or operator shall designate and report in the SWPPP areas for equipment maintenance and repair and concrete chute wash off; provide waste receptacles and regular collection of waste; provide adequately maintained sanitary facilities; provide protected storage areas for chemicals, paints, solvents, fertilizers, pesticides, herbicides, detergents and other potentially toxic materials; and implement spill and leak prevention practices and response procedures if spills and leaks do occur; minimize the exposure of building materials, building products, construction wastes, trash and landscape materials. These areas and specific potential pollutants shall be addressed in the SWPPP and located on the scaled site map.</p> <p>The owner or operator shall provide a description of procedures for:</p> <p>(A) Sweeping or removal of sediment and other debris that has been tracked from the site or deposited from the site onto streets and other paved surfaces;</p> <p>(B) Removal of sediment or other pollutants that have accumulated in or near any sediment control measures, storm water conveyance channels, storm drain inlets, or water course conveyance within the construction site, and;</p> <p>(C) Removal of accumulated sediment that has been trapped by sediment control measures at the site, in accordance with applicable maintenance requirements covered under this permit.</p> <p>The owner or operator shall also provide a description of the procedures for handling and disposing of wastes generated at the site, including, but not limited to, clearing and demolition debris, sediment removed from the site, construction and domestic waste, hazardous or toxic waste, and sanitary waste. [11 Miss. Admin. Code Pt. 6, R. 1]</p>

T-11

**CONSTRUCTION DEWATERING REQUIREMENTS**

Comply with the following requirements to minimize the discharge of pollutants in ground water or accumulated stormwater that is removed from excavations, trenches, foundations, vaults, or other similar points of accumulation. Dewatering discharge shall be managed by BMPs.

- (A) Treat dewatering discharges with controls to minimize discharges of pollutants with controls designed to prevent discharges with visual turbidity to minimize discharges of pollutants. (Appropriate controls include sediment basins or sediment traps, sediment socks, dewatering tanks, tube settlers, weir tanks, filtration systems (e.g., bag or sand filters), other appropriate approval controls, and passive treatment systems that are designed to remove sediment. Appropriate controls to use downstream of dewatering controls to minimize erosion include vegetated buffers, check dams, riprap, and grouted riprap at outlets or other appropriate approval controls.);
- (B) Do not discharge visible floating solids or foam;
- (C) Use an oil-water separator or suitable filtration device (such as a cartridge filter) that is designed to remove oil, grease, or other products if dewatering water

**ACT5 (continued):****Narrative Requirements:**


---

Condition

No. Condition

---

is found to contain these materials; The discharge must not cause the formation of a visible sheen or visible hydrocarbon deposits on the bottom or shoreline of the receiving water.

(D) To the extent feasible, use vegetated, upland areas of the site to infiltrate dewatering water before discharge. Using waters of the State as part of the treatment area is prohibited;

(E) To prevent sediment discharge from causing erosion: (1) Use stable, erosion-resistant surfaces (e.g., well-vegetated grassy areas, clean filter stone, geotextile underlayment) for the discharge from dewatering controls; (2) Do not place dewatering controls, such as pumped water filter bags, on steep slopes.

(F) At all points where dewatering water is discharged, velocity dissipation BMPs must be implemented. The discharge must not cause re-suspension;

(G) With backwash water, either haul it away for disposal or return it to the beginning of the treatment process; and

(H) Replace and/or clean the filter media used in dewatering devices when the pressure differential equals or exceeds the manufacturer's specifications.

[11 Miss. Admin. Code Pt. 6, R. 1]

T-12 Flocculant Application:

Flocculants, meeting the criteria contained in ACT8 and used in accordance with manufacturer's instructions, may be incorporated as part of an overall storm water management system. If flocculant application is proposed, the SWPPP must list the proposed flocculants to be used, describe the method, frequency and location of introduction, and identify the location of BMPs where flocculated material will settle. [11 Miss. Admin. Code Pt. 6, R. 1]

**ACT5 (continued):****Narrative Requirements:**

Condition No.	Condition
T-13	<p data-bbox="222 496 520 521">Prepare Scaled Site Map(s):</p> <p data-bbox="222 557 894 581">The owner or operator shall prepare a scaled site map showing:</p> <ol data-bbox="222 586 2011 971" style="list-style-type: none"> <li data-bbox="222 586 1394 610">(1) Boundaries of property and proposed construction activities, noting any phasing of construction activities,</li> <li data-bbox="222 615 1031 639">(2) Original and proposed contours (if feasible), with steep slopes identified,</li> <li data-bbox="222 644 394 669">(3) North arrow,</li> <li data-bbox="222 673 520 698">(4) Drainage pattern arrows,</li> <li data-bbox="222 703 2011 760">(5) Location of sensitive areas, such as wetlands, perennial streams and adjacent receiving water bodies (if the receiving waterbody is not depicted on the map, the name and direction shall be listed in text form on the map),</li> <li data-bbox="222 764 877 789">(6) Location of any storm drain inlets and any receiving MS4,</li> <li data-bbox="222 794 919 818">(7) All erosion and sediment controls (vegetative and structural),</li> <li data-bbox="222 823 737 847">(8) Any post-construction control measures, and</li> <li data-bbox="222 852 642 876">(9) Location of housekeeping practices.</li> <li data-bbox="222 881 2011 938">(10) Location of construction entrance, equipment maintenance and repair areas, concrete washout area, waste management area, laydown area, and material and chemical storage areas.</li> <li data-bbox="222 943 674 967">(11) Location and size of the buffer zones.</li> </ol> <p data-bbox="222 1036 1499 1060">If flocculant application is proposed, the location(s) of the following items shall be marked and labeled on the site map.</p> <ol data-bbox="222 1065 730 1122" style="list-style-type: none"> <li data-bbox="222 1065 646 1089">(1) Flocculant introduction point(s), and</li> <li data-bbox="222 1094 730 1118">(2) BMPs where flocculated material will settle.</li> </ol>
T-14	<p data-bbox="222 1268 506 1292">Implementation Sequence:</p> <p data-bbox="222 1328 2011 1383">The SWPPP shall outline an implementation sequence (including any phasing of construction activities), which coordinates the timing of all land-disturbing activities together with the necessary erosion and sedimentation control measures planned for the project. [11 Miss. Admin. Code Pt. 6, R. 1]</p>



**ACT5 (continued):****Narrative Requirements:**


---

Condition

No. Condition

---

## T-15 Implementation of Controls:

The SWPPP shall require the owner or operator, in disturbing an area, to implement controls as needed to prevent erosion and adverse impacts to waters of the State. [11 Miss. Admin. Code Pt. 6, R. 1]

## T-16 Maintenance and Weekly Inspections:

The SWPPP shall describe procedures to maintain vegetation, erosion and sediment controls and other protective measures. Procedures shall provide that all controls and outfalls/discharge points are inspected after rain events that produce a discharge and at least weekly for a minimum of four inspections per month in accordance with ACT6, S-5.

Any poorly functioning erosion controls or sediment controls, non-compliant discharges, or any other deficiencies observed during the inspections required under this permit shall be corrected as soon as possible, but not to exceed 24 hours of the inspection unless prevented by unsafe weather conditions as documented on the inspection form.

In the event of an unanticipated breach of a sediment basin/pond, temporary containment measures shall be taken within 24 hours after the inspection. Permanent corrective measures shall be implemented within five (5) days of the inspection; however, if permanent corrective measures cannot be implemented within the timeframes provided herein the owner or operator shall contact MDEQ. [11 Miss. Admin. Code Pt. 6, R. 1]

## T-17 Non-Storm Water Discharge Management:

The SWPPP must identify all allowable sources of non-storm water discharges listed in ACT2, T-2, except for flows from actual fire-fighting activities, which are combined with storm water discharges associated with large construction activity. Non-storm water discharges should be eliminated or reduced to the extent feasible. Wash waters must be treated in a sediment basin or alternate control that provides equivalent or better treatment prior to discharge. The SWPPP must identify and ensure the implementation of appropriate Best Management Practices (BMPs) for the non-storm water component of the discharge.

The Permit Board staff will review the above discharges on a case-by-case basis and may require the coverage recipient to apply for and obtain either an individual or an alternative general NPDES permit as provided in ACT3, S-2. [11 Miss. Admin. Code Pt. 6, R. 1]

## T-18 Final Stabilization:

The SWPPP shall describe procedures to achieve final stabilization (See Definitions) of all disturbed areas of the project site. [11 Miss. Admin. Code Pt. 6, R. 1]

**ACT5 (continued):****Narrative Requirements:**

Condition No.	Condition
T-19	<p>Example Storm Water Pollution Prevention Plans (SWPPPs):</p> <p>Example SWPPPs are included in the Mississippi Storm Water Pollution Prevention Plan Guidance Manual for Construction Activities as well as the MDEQ Registration Form for Individual Residential Lots</p> <p>The Mississippi Storm Water Pollution Prevention Plan Guidance Manual for Construction Activities is also available online at:  <a href="http://www.mdeq.ms.gov/construction-stormwater/">www.mdeq.ms.gov/construction-stormwater/</a>  The MDEQ Registration Form for Individual Residential Lots is in the Large Construction Forms Package, which is available online at:  <a href="http://www.mdeq.ms.gov/construction-stormwater/">www.mdeq.ms.gov/construction-stormwater/</a>  US EPA also lists example SWPPPs on their website at: <a href="http://cfpub.epa.gov/npdes/stormwater/swppp.cfm#model">http://cfpub.epa.gov/npdes/stormwater/swppp.cfm#model</a>. [11 Miss. Admin. Code Pt. 6, R. 1]</p>
T-20	<p><b>STAFF TRAINING REQUIREMENTS</b></p> <p>Each operator, or group of multiple operators, must assemble a “stormwater team” to carry out compliance activities associated with the requirements in this permit. Prior to the commencement of construction activities, the permittee must ensure that the following personnel on the stormwater team understand the requirements of this permit and their specific responsibilities with respect to those requirements:</p> <ol style="list-style-type: none"> <li>(1) Personnel who are responsible for the design, installation, maintenance, and/or repair of stormwater controls (including pollution prevention controls);</li> <li>(2) Personnel responsible for the application and storage of treatment chemicals (if applicable)</li> <li>(3) Personnel who are responsible for conducting inspections as required in ACT6, S-5; and</li> <li>(4) Personnel who are responsible for taking corrective actions as required in ACT6, S-2.</li> </ol> <p>The permittee is responsible for ensuring that all activities on the site comply with the requirements of this permit. The permittee is not required to provide or document formal training for subcontractors or other outside service providers, but the permittee must ensure that such personnel understand any requirements of this permit that may be affected by the work they are subcontracted to perform.</p> <p>At a minimum, members of the stormwater team must be trained to understand the following if related to the scope of their job duties (e.g., only personnel responsible for conducting inspections need to understand how to conduct inspections):</p> <p>The permit deadlines associated with installation, maintenance, and removal of stormwater controls and with stabilization;</p>

## Narrative Requirements:

---

ConditionNo. Condition

---

The location of all stormwater controls on the site required by this permit and how they are to be maintained;  
The proper procedures to follow with respect to the permit's pollution prevention requirements; and  
When and how to conduct inspections, record applicable findings, and take corrective actions.

Each member of the stormwater team must have easy access to an electronic or paper copy of applicable portions of this permit, the most updated copy of the SWPPP, and other relevant documents or information that must be kept with the SWPPP.

T-21

## STAFF TRAINING DOCUMENTATION

Staff Training conducted to meet the requirements of this ACT shall be documented. Training records shall include employee's name, date of training, brief content/nature of training, and the employee's signature acknowledging training was received. Staff training associated with this permit may be documented on the Employee Training Log that is provided on the MDEQ website at [www.mdeq.ms.gov/construction-stormwater/](http://www.mdeq.ms.gov/construction-stormwater/). The permittee may use an alternative form to record this information, so long as it includes all of the information on the above referenced form. Employee training documentation shall be maintained on-site with the SWPPP and made available to MDEQ personnel for inspection upon request.

**ACT6 (LCGP) Implementation and Inspection Requirements:****Submittal/Action Requirements:**

Condition No.	Condition
S-1	<p><b>IMPLEMENTATION REQUIREMENTS:</b></p> <p>The coverage recipient shall:</p> <ol style="list-style-type: none"> <li>(1) Implement the site-specific SWPPP. Failure to implement the SWPPP is a violation of permit requirements.</li> <li>(2) Install structural practices as described in ACT5, T-6 in accordance with the site-specific SWPPP.</li> <li>(3) Retain a copy of the SWPPP at the permitted site, and, if feasible, post a copy of the NOI onsite in a location available to the public (e.g., construction entrance, trailer, or model home). A copy of the SWPPP shall be made available to state or local inspectors upon request for review at the time of an on-site inspection. In cases where there is no office or shelter to maintain documents onsite, the SWPPP can be kept locally available (i.e., able to be produced within an hour of being requested by a state or local inspector).</li> <li>(4) Implement the following pre-construction activities: <ol style="list-style-type: none"> <li>(A) Mark off areas of "disturbance", "no disturbance" and "sensitive areas" (e.g., delineate and clearly flag or mark off areas such as steep slopes, highly erodible soils or other sensitive areas),</li> <li>(B) Preserve native topsoil on the site to the extent feasible, and</li> <li>(C) Limit construction stream crossings to the minimum necessary to provide access for the construction project.</li> </ol> </li> <li>(5) Ensure that appropriate Best Management Practices (BMPs) are in place upon commencement of construction activities (see Definitions).</li> <li>(6) Amend the SWPPP if notified at any time by the Executive Director of the MDEQ that the SWPPP does not meet the minimum requirements. Coverage recipient shall certify in writing to the Executive Director that the requested changes have been made. Unless otherwise provided, the requested changes shall be made within fifteen (15) days. [11 Miss. Admin. Code Pt. 6, R. 1]</li> </ol>

**ACT6 (continued):****Submittal/Action Requirements:**

Condition No.	Condition
S-2	<p data-bbox="222 553 806 578"><b>IMPLEMENTATION REQUIREMENTS (continued):</b></p> <p data-bbox="222 613 1967 727">(7) Amend the SWPPP whenever there is a change in design, construction, operation, or maintenance that may potentially affect the discharge of pollutants to waters of the State; or the SWPPP proves to be ineffective in controlling storm water pollutants. The amended SWPPP shall be submitted within thirty (30) days of amendment. Coverage recipients shall submit to MDEQ the Major Modification Form (see Large Construction Forms Package) for subsequent phases, expansions and modifications of subdivision development that are proposed but were not included in the original SWPPP.</p> <p data-bbox="222 763 1967 820">(8) Install needed erosion controls even if they may be located in the way of subsequent activities, such as utility installation, grading or construction. It shall not be an acceptable defense that controls were not installed because subsequent activities would require their replacement or cause their destruction.</p> <p data-bbox="222 855 1940 880">(9) Install additional and/or alternative erosion and sediment controls when existing controls prove to be ineffective in preventing sediment from leaving the site.</p> <p data-bbox="222 915 1692 938">(10) Comply with applicable State or local waste disposal, sanitary sewer or septic system regulations. [11 Miss. Admin. Code Pt. 6, R. 1]</p>
S-3	<p data-bbox="222 971 806 995"><b>IMPLEMENTATION REQUIREMENTS (continued):</b></p> <p data-bbox="222 1031 1967 1144">(11) Erosion and sediment controls shall be maintained at all times. Except for sediment basins, all accumulated sediment shall be removed from structural controls when sediment deposits reach one-third to one-half the height of the control. For sediment basins, accumulated sediment shall be removed when the capacity has been reduced by 50%. All removed sediment deposits shall be properly disposed of in accordance with the approved SWPPP. Non-functioning controls shall be repaired, replaced or supplemented with functional controls within twenty-four (24) hours of discovery or as soon as field conditions allow.</p> <p data-bbox="222 1180 1967 1235">(12) If, after coverage issuance, a specific wasteload allocation is established that would apply to the facility's discharge, the facility must implement steps necessary to meet that allocation. [11 Miss. Admin. Code Pt. 6, R. 1]</p>
S-4	<p data-bbox="222 1268 947 1292"><b>COMPLIANCE WITH LOCAL STORM WATER ORDINANCES:</b></p> <p data-bbox="222 1328 1041 1352">(1) The SWPPP shall be in compliance with all local storm water ordinances.</p> <p data-bbox="222 1388 1967 1433">(2) When storm water discharges into an MS4 (municipal separate storm sewer system), the owner or operator shall make the SWPPP available to the local authority and/or allow site access, upon request. [11 Miss. Admin. Code Pt. 6, R. 1]</p>

**ACT6 (continued):****Submittal/Action Requirements:**

Condition No.	Condition
S-5	<p><b>INSPECTION REQUIREMENTS:</b></p> <p>Inspection of all receiving streams (if feasible), outfalls, erosion and sediment controls and other SWPPP requirements shall be performed during permit coverage using a copy of the form provided in the Large Construction Forms Package (or equivalent form), and inspections shall be performed by qualified personnel (see Definitions):</p> <p>(1) At least weekly for a minimum of four inspections per month; and</p> <p>(2) As often as is necessary to ensure that appropriate erosion and sediment controls have been properly constructed and maintained and to determine if additional or alternative control measures are required.</p> <p>Before conducting the site inspection, the inspector should review Chapter 4, Inspector's Checklist and Troubleshooting Chart found in MDEQ's Field Manual for Erosion and Sediment Control on Construction Sites in Mississippi.</p> <p>MDEQ strongly recommends that coverage recipients perform a "walk through" inspection of the construction site daily to ensure controls are in place and will function properly. [11 Miss. Admin. Code Pt. 6, R. 1]</p>

**ACT7 (LCGP) Limitation Requirements:**

Limitation Requirements:

Condition No.	Parameter	Condition
L-1		<p>NON-NUMERIC LIMITATION REQUIREMENTS</p> <p>Storm water discharge shall be free from:</p> <ul style="list-style-type: none"> <li>(1) Debris, oil, scum, and other floating materials other than in trace amounts,</li> <li>(2) Eroded soils and other materials that will settle to form objectionable deposits in receiving waters,</li> <li>(3) Suspended solids, turbidity and color at levels inconsistent with the receiving waters,</li> <li>(4) Chemicals in concentrations that would cause violation of State Water Quality Criteria in the receiving waters. [11 Miss. Admin. Code Pt. 6, Ch. 2, R. 1]</li> </ul>

**ACT8 (LCGP) Application of Flocculants:****Narrative Requirements:**

Condition No.	Condition
T-1	<p data-bbox="222 548 1967 607">Coverage recipients may need to supplement conventional storm water management systems with flocculants to meet state water quality standards. Flocculants meeting the criteria listed in (1) and (2) below and used in accordance with manufacturer's instructions are approved by this general permit.</p> <p data-bbox="222 639 1967 786">Any flocculant application, which deviates from the criteria specified below, must receive written approval from MDEQ prior to being implemented. Requests for approval must be in writing and shall describe the deviation, explain the justification for the deviation and provide supporting documentation demonstrating that such deviation will achieve equivalent performance to the criteria listed below. A SDS (Safety Data Sheet) of the flocculant shall be included with the request. The request shall include the dosage of the flocculant that will be used. Such requests may be submitted with the LCNOI or under separate cover to the address listed on the LCNOI.</p> <p data-bbox="222 818 1629 844">(1) Polymer flocculants for treating turbidity in construction site storm water discharges must meet the following minimum criteria.</p> <p data-bbox="222 876 758 902">(A) Only anionic Polyacrylamide (PAM) polymer,</p> <p data-bbox="222 935 848 961">(B) Polymer shall contain less than 0.05% free acrylamide,</p> <p data-bbox="222 993 982 1019">(C) Polymer shall be non-toxic to fish and other aquatic organisms, and</p> <p data-bbox="222 1052 1020 1078">(D) Polymer shall be selected for site-specific soil conditions (i.e., jar test).</p> <p data-bbox="222 1110 1803 1136">(2) Systems utilizing polymer flocculants to treat turbidity from construction site storm water discharges must meet the following minimum criteria.</p> <p data-bbox="222 1169 1425 1195">(A) Polymer shall be introduced through turbulent mixing into the storm water upstream of sedimentation BMPs,</p> <p data-bbox="222 1227 1371 1253">(B) Sedimentation basin shall be constructed in accordance with the criteria specified in ACT5, T-5 (2)(A),</p> <p data-bbox="222 1286 1079 1312">(C) Polymer shall be applied in accordance with manufacturer's instructions, and</p> <p data-bbox="222 1344 1812 1370">(D) There shall be no discharge of un-dissolved polymer, clumps of polymer and/or unsettled flocculant material. [11 Miss. Admin. Code Pt. 6, R. 1]</p>



**ACT9 (LCGP) Record Keeping and Reporting Requirements:**

**Record-Keeping Requirements:**

Condition	
No.	Condition
R-1	<p><b>RETENTION OF RECORDS:</b></p> <p>All records, reports, forms and information resulting from activities required by this permit shall be retained for a period of at least three (3) years from the date that the document(s) was generated. Any documents required by this permit may be kept electronically but must be readily available during site inspection or upon request. [11 Miss. Admin. Code Pt. 6, R. 1]</p>

**ACT9 (continued):****Submittal/Action Requirements:**


---

Condition
No. Condition

---

**Submittal/Action Requirements:****S-1 SUSPENSION OF WEEKLY INSPECTIONS AND MONTHLY RECORD KEEPING:**

Coverage recipients under this general permit may suspend weekly inspection and monthly record keeping requirements, if the coverage recipient certifies that:

- (1) Land-disturbing activities have temporarily ceased,
- (2) No further land-disturbing activities are planned for a period of at least six (6) months,
- (3) Areas that have been disturbed meet the definition of "final stabilization" (see Definitions), with no active erosion, and
- (4) Vegetative cover has been established.

Color photographs representative of the site must be submitted with the Inspection Suspension Form provided in the Large Construction Forms Package. The coverage recipient shall notify the MDEQ once construction activities are resumed and the weekly inspections shall commence immediately and as required in ACT6, S-5. The coverage recipient is still responsible for all permit conditions during the suspension period and nothing in this condition shall limit the rights of the MDEQ to take enforcement or other actions against the coverage recipient. [11 Miss. Admin. Code Pt. 6, R. 1]

**S-2 The inspections described in ACT7, S-5 must be documented on copies of the Monthly Inspection Report and Certification Form provided in the Large Construction Forms Package (or equivalent form) and be kept with the SWPPP.**

Submittals of the MDEQ Registration Form for residential lots are required. It is the responsibility of both the owner or developer (seller) and the new owner or operator (purchaser) to maintain a copy of the MDEQ Registration Form. The new owner or operator must maintain a copy of the MDEQ Registration Form at the site. In cases where there is no office or shelter to maintain documents onsite, the Registration Form can be kept locally available (i.e., able to be produced within an hour of being requested by state or local inspectors). [11 Miss. Admin. Code Pt. 6, R. 1]

**ACT10 (LCGP) Termination of Permit Coverage:****Submittal/Action Requirements:**

Condition No.	Condition
S-1	<p>Within thirty (30) days of final stabilization (see Definition of Final Stabilization (1)) for a covered project, a completed Request for Termination (RFT) of Coverage form (provided in the Large Construction Forms Package) and colored photographs of the stabilized site shall be submitted to the Permit Board. Upon receiving the completed RFT, the MDEQ staff may inspect the site. If no sediment and erosion control problems are identified and adequate permanent controls are established, the owner or operator will receive a termination letter. Coverage is not terminated until notified in writing by MDEQ. Failing to submit a RFT is a violation of permit conditions.</p> <p>The coverage recipient of a "larger common plan of development or sale" must submit a RFT within thirty (30) days after the following conditions are met:</p> <p>(1) Final stabilization (see Definition of Final Stabilization (2)) has been achieved on all portions of the site for which the coverage recipient is responsible, and</p> <p>(2) Other owner(s) or operator(s) have assumed control (by completing a LCNOI or MDEQ Registration Form) over all areas of the site that have not achieved final stabilization.</p> <p>The coverage recipient of a residential "larger common plan of development or sale" must submit a copy of the MDEQ Registration Form for each lot sold with the RFT.</p> <p>Residential lot owners or operators that have completed the MDEQ Registration Forms are not required to submit a RFT, unless specifically requested by the MDEQ staff. The lot permit coverage is considered terminated upon "successful completion of all permanent erosion and sediment controls" (see Definitions).</p> <p>Beginning December 21, 2025, the RFT must be submitted electronically as required by 40 CFR 127.16. [11 Miss. Admin. Code Pt. 6, R. 1]</p>

**ACT11 (LCGP) Standard Requirements Applicable To All Water Permits:****Narrative Requirements:**

Condition No.	Condition
T-1	<p><b>DUTY TO COMPLY:</b></p> <p>The coverage recipient must comply with all conditions of this permit. Any permit noncompliance constitutes a violation and is grounds for enforcement action; for coverage termination, revocation and reissuance, or modifications; or denial of a renewal application. [11 Miss. Admin. Code Pt. 6, R. 1]</p>
T-2	<p><b>DUTY TO MITIGATE:</b></p> <p>The owner or operator shall take all reasonable steps to minimize or prevent any discharge in violation of this permit, which is likely to adversely affect human health or the environment. [11 Miss. Admin. Code Pt. 6, R. 1]</p>
T-3	<p><b>DUTY TO PROVIDE INFORMATION:</b></p> <p>The owner or operator shall furnish to the Permit Board, within a reasonable time, any information that the Permit Board may request to determine compliance with this permit. [11 Miss. Admin. Code Pt. 6, R. 1]</p>
T-4	<p><b>PROPERTY RIGHTS:</b></p> <p>The issuance of this permit does not convey any property rights of any sort, nor any exclusive privileges, nor does it authorize any injury to private property nor any invasion of personal rights, nor any infringement of Federal, State or local laws or regulations. [11 Miss. Admin. Code Pt. 6, R. 1]</p>
T-5	<p><b>SEVERABILITY:</b></p> <p>The provisions of this permit are severable. If any provision of this permit, or the application of any provision of this permit to any circumstances, is challenged or held invalid, the validity of the remaining permit provisions and/or portions thereof or their application to other persons or sets of circumstances, shall not be affected thereby. [11 Miss. Admin. Code Pt. 6, R. 1]</p>
T-6	<p><b>OIL AND HAZARDOUS SUBSTANCE LIABILITY:</b></p> <p>Nothing in this permit shall relieve the owner or operator from responsibilities, liabilities, or penalties under Section 311 of the CWA (33 U.S.C. Section 1321). [11 Miss. Admin. Code Pt. 6, R. 1]</p>

**ACT11 (continued):****Narrative Requirements:**

Condition No.	Condition
T-7	<p data-bbox="222 521 594 548"><b>SIGNATORY REQUIREMENTS:</b></p> <p data-bbox="222 581 940 609">All LCNOIs and requests for recoverage shall be signed as follows:</p> <p data-bbox="222 641 1398 669">(1) For a corporation by a responsible corporate officer. For this permit, a responsible corporate officer means:</p> <p data-bbox="222 701 1969 758">(A) A president, secretary, treasurer, or vice-president of the corporation in charge of a principal business function, or any other person who performs similar policy or decision-making functions for the corporation; or</p> <p data-bbox="222 790 1969 938">(B) The manager of one or more manufacturing, production or operating facilities, provided, the manager is authorized to make management decisions which govern the operation of the regulated facility including having the explicit or implicit duty of making major capital investment recommendations, and initiating and directing other comprehensive measures to assure long term environmental compliance with environmental laws and regulations; the manager can ensure that the necessary systems are established or actions taken to gather complete and accurate information for permit application requirements; and where authority to sign documents has been assigned or delegated to the manager in accordance with corporate procedures;</p> <p data-bbox="222 971 1969 1089">Note: MDEQ does not require specific assignments or delegations of authority to responsible corporate officers identified in paragraph (1)(A) above. The Department will presume that these responsible corporate officers have the requisite authority to sign permit applications unless the corporation has notified the Permit Board to the contrary. Corporate procedures governing authority to sign permit applications may provide for assignment or delegation to applicable corporate positions under paragraph (1)(B) above rather than to specific individuals.</p> <p data-bbox="222 1122 1255 1149">(2) For a partnership or sole proprietorship by a general partner or the proprietor, respectively; or</p> <p data-bbox="222 1182 1969 1239">(3) For a municipal, State, Federal, or other public agency by either a principal executive officer or ranking elected official. For purposes of this section, a principal executive officer of a Federal agency includes:</p> <p data-bbox="222 1271 737 1299">(A) The chief executive officer of the agency, or</p> <p data-bbox="222 1331 1906 1359">(B) A senior executive officer having responsibility for the overall operations of a principal geographic unit of the agency. [11 Miss. Admin. Code Pt. 6, R. 1]</p>

**ACT11 (continued):****Narrative Requirements:**

Condition No.	Condition
T-8	<p data-bbox="222 521 716 548"><b>DULY AUTHORIZED REPRESENTATIVE:</b></p> <p data-bbox="222 581 1967 641">All SWPPPs, reports required by this permit, certifications and other information requested by the Permit Board shall be signed by a person described in T-7 above, or by a duly authorized representative of that person. A person is a duly authorized representative when:</p> <p data-bbox="222 673 1402 701">(1) The authorization is made in writing and submitted to the Permit Board by a person described in T-7 above.</p> <p data-bbox="222 734 1967 818">(2) The authorization specifies either an individual or a position having responsibility for the overall operation of the regulated activity, such as: manager, operator of a well or well field, superintendent, person of equivalent responsibility, or an individual or position having overall responsibility for environmental matters for the company. (A duly authorized representative may be either a specified individual or position). [11 Miss. Admin. Code Pt. 6, R. 1]</p>
T-9	<p data-bbox="222 846 621 873"><b>CHANGES TO AUTHORIZATION:</b></p> <p data-bbox="222 906 1967 992">If an authorization is no longer accurate because a different individual or position has permit responsibility, a new authorization satisfying the requirements of T-7 and T-8 above, must be submitted to the Permit Board prior to or together with any reports, information or applications signed by the representative. [11 Miss. Admin. Code Pt. 6, R. 1]</p>
T-10	<p data-bbox="222 1019 428 1047"><b>CERTIFICATION:</b></p> <p data-bbox="222 1079 1157 1107">Any person signing documents under this section shall make the following certification:</p> <p data-bbox="222 1140 1967 1284">"I certify under penalty of law that this document and all attachments were prepared under my direction or supervision in accordance with a system designed to assure that qualified personnel properly gathered and evaluated the information submitted. Based on my inquiry of the person or persons who manage the system, or those persons directly responsible for gathering the information, the information submitted is, to the best of my knowledge and belief, true, accurate and complete. I am aware that there are significant penalties for submitting false information, including the possibility of fine and imprisonment for knowing violations." [11 Miss. Admin. Code Pt. 6, R. 1]</p>

**ACT11 (continued):****Narrative Requirements:**

Condition No.	Condition
T-11	<p data-bbox="222 521 751 548"><b>PROPER OPERATION AND MAINTENANCE:</b></p> <p data-bbox="222 581 1965 699">The coverage recipient shall at all times properly operate and maintain all facilities and systems of treatment and control (and related appurtenances) which are installed or used by the coverage recipient to achieve compliance with the conditions of this permit including the Storm Water Pollution Prevention Plan. Proper operation and maintenance includes adequate laboratory controls with appropriate quality assurance procedures and requires the operation of backup or auxiliary facilities when necessary to achieve compliance with permit conditions. [11 Miss. Admin. Code Pt. 6, R. 1]</p>
T-12	<p data-bbox="222 727 594 755"><b>MONITORING AND RECORDS:</b></p> <p data-bbox="222 787 1965 841">(1) Monitoring. Samples and measurements shall be representative of the monitored activity and must be conducted according to test procedures approved under 40 CFR Part 136.</p> <p data-bbox="222 873 1965 1024">(2) Retention of Records. The owner or operator shall retain records of all required monitoring information for a period of at least three years from the date of the measurement, report, or application. This information includes all calibration and maintenance records, all original strip chart recordings for continuous monitoring instrumentation, copies of all reports required by this permit, and records of all data used to complete the Notice of Intent to be covered by this permit. This period may be extended by request of the Permit Board or its designee. Any documents required by this permit may be kept electronically but must be readily available during site inspection or upon request.</p> <p data-bbox="222 1057 1965 1291">(3) Record Contents. Records of monitoring information shall include:  (A) The date, exact location, and time of sampling or measurements,  (B) The initials or names of the individuals who performed the sampling or measurements,  (C) The date(s) and time(s) analyses were performed,  (D) The initials or names of the individuals who performed the analyses,  (E) References and written procedures, when available, for the analytical techniques or methods used, and  (F) The results of such analyses, including the bench sheets, instrument readouts, computer disks or tapes, etc., used to determine these results. [11 Miss. Admin. Code Pt. 6, R. 1]</p>

**ACT11 (continued):****Narrative Requirements:**

Condition No.	Condition
T-13	<p data-bbox="222 521 506 548"><b>BYPASS PROHIBITION:</b></p> <p data-bbox="222 581 1967 727">Bypass (see 40 CFR 122.41(m)) is prohibited and enforcement action may be taken against an coverage recipient for a bypass, unless: a) the bypass was unavoidable to prevent loss of life, personal injury, or severe property damage; b) There were no feasible alternatives to the bypass, such as the use of auxiliary treatment facilities, retention of untreated wastes, or maintenance during normal periods of equipment downtime (this condition is not satisfied if the coverage recipient should, in the exercise of reasonable engineering judgment, have installed adequate backup equipment to prevent a bypass which occurred during normal periods of equipment downtime or preventive maintenance); and c) The owner or operator submitted notices per T-17 of this ACT. [11 Miss. Admin. Code Pt. 6, R. 1]</p>
T-14	<p data-bbox="222 756 478 784"><b>UPSET CONDITIONS:</b></p> <p data-bbox="222 816 1967 873">An upset (see 40 CFR 122.41(n)) constitutes an affirmative defense to an action brought for noncompliance with technology-based permit limitations if a coverage recipient shall demonstrate, through properly signed, contemporaneous operating logs, or other relevant evidence, that:</p> <ol data-bbox="222 906 1967 1170" style="list-style-type: none"> <li data-bbox="222 906 1241 933">(1) An upset occurred and the coverage recipient can identify the specific cause(s) of the upset,</li> <li data-bbox="222 966 1056 993">(2) The permitted facility was at the time of the upset being properly operated,</li> <li data-bbox="222 1026 982 1053">(3) The coverage recipient submitted notices per T-17 of this ACT, and</li> <li data-bbox="222 1086 1967 1170">(4) The coverage recipient took remedial measures as required under T-2 of this ACT. In any enforcement proceeding, the coverage recipient has the burden of proof that an upset occurred. No determination made during administrative review of claims that noncompliance was caused by upset, and before an action for noncompliance is initiated, will be considered a final administrative action subject to judicial review. [11 Miss. Admin. Code Pt. 6, R. 1]</li> </ol>



**ACT11 (continued):****Narrative Requirements:**

Condition No.	Condition
T-15	<p>INSPECTION AND ENTRY:</p> <p>The coverage recipient shall allow the Permit Board staff or an authorized representative, upon the presentation of credentials and other documents as may be required by law, to:</p> <ul style="list-style-type: none"><li>(1) Enter upon the owner or operator's premises where a regulated activity is located or conducted or where records must be kept under the conditions of this permit;</li><li>(2) Have access to and copy at reasonable times any records that must be kept under the conditions of this permit;</li><li>(3) Inspect at reasonable times any facilities or equipment (including monitoring and control equipment), practices, or operations regulated or required under this permit; and</li><li>(4) Sample or monitor at reasonable times, for the purposes of assuring permit compliance or as otherwise authorized by the Clean Water Act, any substances or parameters at any location. [11 Miss. Admin. Code Pt. 6, R. 1]</li></ul>
T-16	<p>PERMIT ACTIONS:</p> <p>This permit may be modified, revoked and reissued, or terminated for cause. A request by the coverage recipient for permit or coverage modification, revocation and reissuance, or termination, or a certification of planned changes or anticipated noncompliance does not stay any permit condition. [11 Miss. Admin. Code Pt. 6, R. 1]</p>

**ACT11 (continued):****Narrative Requirements:**

Condition No.	Condition
T-17	<p><b>NONCOMPLIANCE REPORTING:</b></p> <p>(1) Anticipated Noncompliance. The coverage recipient shall give at least ten (10) days advance notice, if possible, before any planned noncompliance with permit requirements. Giving notice of planned or anticipated noncompliance does not immunize the coverage recipient from enforcement action for that noncompliance.</p> <p>(2) Unanticipated Noncompliance. The coverage recipient shall notify the MDEQ orally within twenty-four (24) hours from the time he or she becomes aware of unanticipated noncompliance, which may endanger health or the environment. A written report shall be provided to the MDEQ within five (5) working days of the time he or she becomes aware of the circumstances leading to the unanticipated noncompliance. The report shall describe the cause, the exact dates and times, steps taken or planned to reduce, eliminate, or prevent reoccurrence and, if the noncompliance has not ceased, the anticipated time for correction. MDEQ may waive the written report on a case-by-case basis, if the oral report is received within 24 hours. [11 Miss. Admin. Code Pt. 6, R. 1]</p>
T-18	<p><b>REOPENER CLAUSE:</b></p> <p>If there is evidence indicating potential or realized impacts on water quality due to large construction activities covered by this permit, the coverage recipient may be required to obtain individual permit or an alternative general permit in accordance with ACT3, S-2 or the permit may be modified to include different limitations and/or requirements. [11 Miss. Admin. Code Pt. 6, R. 1]</p>
T-19	<p><b>PERMIT MODIFICATION:</b></p> <p>Permit modification or revocation will be conducted according to 40 CFR 122.62, 122.63, 122.64 and 124.5. [11 Miss. Admin. Code Pt. 6, R. 1]</p>
T-20	<p><b>TRANSFERS:</b></p> <p>Coverage under this permit is not transferable to any person except after notice to and approval by the Permit Board. The Permit Board may require the coverage recipient to obtain another NPDES permit as stated in ACT3, S-2. Transfer of coverage requests shall be submitted to the Permit Board using the form provided in the Large Construction Forms Package. [11 Miss. Admin. Code Pt. 6, R. 1]</p>

**ACT11 (continued):****Narrative Requirements:**

Condition No.	Condition
T-21	<p>CONTINUATION OF EXPIRED GENERAL PERMIT:</p> <p>If this permit is not reissued prior to the expiration date, it will be administratively continued and remain in force and effect. Permit coverage will remain until the earliest of:</p> <ul style="list-style-type: none"> <li>(1) Recoverage under the reissued general permit;</li> <li>(2) Submittal of a Request for Termination and receipt of written concurrence;</li> <li>(3) Issuance of an individual permit for the project's discharge; or</li> <li>(4) A formal permit decision by the Permit Board to not reissue the general permit, at which time the coverage recipient must seek coverage under an alternative general permit or an individual permit. [11 Miss. Admin. Code Pt. 6, R. 1]</li> </ul>
T-22	<p>FALSIFYING REPORTS:</p> <p>Any coverage recipient who falsifies any written report required by or in response to a permit condition shall be deemed to have violated a permit condition and shall be subject to the penalties provided for a violation of a permit condition pursuant to Section 49-17-43 of the Mississippi Water Pollution Control Law (Mississippi Code Ann. Sections 49-17-1 et seq.). [11 Miss. Admin. Code Pt. 6, R. 1]</p>
T-23	<p>CIVIL AND CRIMINAL LIABILITY:</p> <ul style="list-style-type: none"> <li>(1) Any person who violates a term, condition or schedule of compliance contained within this permit or the Mississippi Air and Water Pollution Control Law is subject to the actions defined by the Mississippi Air and Water Pollution Control Law.</li> <li>(2) Except as provided in permit conditions on "Bypassing" and "Upsets", nothing in this permit shall be construed to relieve the coverage recipient from civil or criminal penalties for noncompliance.</li> <li>(3) It shall not be the defense of the coverage recipient in an enforcement action that it would have been necessary to halt or reduce the permitted activity in order to maintain compliance with the conditions of this permit. [11 Miss. Admin. Code Pt. 6, R. 1]</li> </ul>

**ACT12 (LCGP) Definitions:****Narrative Requirements:**

Condition No.	Condition
T-1	BEST MANAGEMENT PRACTICES (BMPs) means schedules of activities, prohibitions of practices, maintenance procedures, and other management practices to prevent or reduce the discharge of pollutants to waters of the United States. BMPs also include treatment requirements, operating procedures, and practices to control plant site runoff, spillage or leaks, sludge or waste disposal, or drainage from raw material storage. [11 Miss. Admin. Code Pt. 6, R. 1]
T-2	BUFFER ZONE, as used in this permit, means a strip of dense undisturbed perennial vegetation, either original or reestablished, that borders perennial streams and rivers, ponds and lakes and wetlands. Buffer zones are established for the purposes of slowing water runoff, enhancing water infiltration, and minimizing the risk of any potential nutrients or pollutants from leaving the upland area and reaching surface waters. Buffer zones are most effective when storm water runoff is flowing into and through the buffer zone as shallow sheet flow, rather than in concentrated form such as in channels, gullies, or wet weather conveyances. Therefore, it is critical that the design of any development include management practices, to the maximum extent practical, that will result in storm water runoff flowing into and through the buffer zone as shallow sheet flow. [11 Miss. Admin. Code Pt. 6, R. 1]
T-3	CFR means the Code of Federal Regulations. [11 Miss. Admin. Code Pt. 6, R. 1]
T-4	CLEAN WATER ACT (CWA) refers to the Federal Water Pollution Control Act, 33 U.S.C. section 1251 et seq. [11 Miss. Admin. Code Pt. 6, R. 1]
T-5	COMMENCEMENT OF CONSTRUCTION ACTIVITIES means the initial disturbance of soils associated with clearing, grading, grubbing, or excavating activities or other construction-related activities. [11 Miss. Admin. Code Pt. 6, R. 1]
T-6	COMMISSION means the Mississippi Commission on Environmental Quality. [11 Miss. Admin. Code Pt. 6, R. 1]
T-7	COMPACTION means the process by which the soil grains are rearranged to decrease void space and bring the grains into closer contact with one another and thereby increase the weight of solid material per cubic foot. [11 Miss. Admin. Code Pt. 6, R. 1]
T-8	CONSTRUCTION ACTIVITY as used in this permit, includes construction activity as defined in 40 CFR part 122.26(b)(14)(x). This includes a disturbance to the land that results in the change in topography, existing soil cover (both vegetative and non-vegetative), or the existing topography that may result in accelerated storm water runoff, leading to soil erosion and movement of sediment into surface waters or drainage systems. Examples of construction activity may include clearing, grading, grubbing, filling and excavating. Construction activity does not include routine maintenance that is performed to maintain the original line and grade, hydraulic capacity, or original purpose of the site. [11 Miss. Admin. Code Pt. 6, R. 1]
T-9	CONSTRUCTION SUPPORT ACTIVITY a construction-related activity that specifically supports the construction activity and involves earth disturbance or pollutant-generating activities of its own, and can include activities associated with concrete or asphalt batch plants, equipment staging yards, materials storage areas, excavated material disposal areas, and borrow areas. [11 Miss. Admin. Code Pt. 6, R. 1]

**ACT12 (LCGP) Definitions:****Narrative Requirements:**

Condition No.	Condition
T-10	CONTROL MEASURE as used in this permit, refers to any Best Management Practice or other method used to prevent or reduce the discharge of pollutants to waters of the United States. [11 Miss. Admin. Code Pt. 6, R. 1]
T-11	DAILY DISCHARGE means the "discharge of a pollutant" measured during a calendar day or any 24-hour period that reasonably represents the calendar day for purposes of sampling. For pollutants with limitations expressed in units of mass, the "daily discharge" is calculated as the total mass of the pollutant discharged over the day. For pollutants with limitations expressed in other units of measurements, the "daily average" is calculated as the average measurement of the discharge of the pollutant over the day. [11 Miss. Admin. Code Pt. 6, R. 1]
T-12	DEWATERING means the act of draining rainwater and/or ground water from building foundations, vaults, and trenches. [11 Miss. Admin. Code Pt. 6, R. 1]
T-13	DROUGHT-STRICKEN AREA means for the purposes of this permit an area in which the National Oceanic and Atmospheric Administration's U.S. Seasonal Drought Outlook indicates for the period during which the construction will occur that any of the following conditions are likely: (1) "Drought to persist or intensify", (2) "Drought ongoing, some improvement", (3) "Drought likely to improve, impacts ease", or (4) "Drought development likely". See <a href="http://www.cpc.ncep.noaa.gov/products/expert_assessment/season_drought.gif">http://www.cpc.ncep.noaa.gov/products/expert_assessment/season_drought.gif</a> . [11 Miss. Admin. Code Pt. 6, R. 1]
T-14	EXECUTIVE DIRECTOR means the Executive Director of the Department of Environmental Quality. [11 Miss. Admin. Code Pt. 6, R. 1]
T-15	FACILITY or ACTIVITY means any NPDES "point source" or any other facility or activity (including land or appurtenances thereto) that is subject to regulation under the NPDES program. [11 Miss. Admin. Code Pt. 6, R. 1]
T-16	<p>FINAL STABILIZATION means that either:</p> <p>(1) All soil disturbing activities at the site have been completed, and that a uniform perennial vegetative cover with a density of at least 70% for the area has been established or equivalent measures (e.g., concrete or asphalt paving, rip rap, etc.) have been employed; or</p> <p>(2) For individual lots part of a larger common plan of development or sale in residential or commercial developments, that either:</p> <p>(A) The coverage recipient has completed final stabilization as specified in (1) above, or</p> <p>(B) The coverage recipient has established temporary stabilization before another property owner assumes operational control for the property AND the coverage recipient for the larger common plan of development has provided the appropriate Notice of Intent or Registration form, the appropriate Construction General Permit, and guidance documents to the new property owner and the new owner assumes control by completing the appropriate NOI or Registration Form.</p>

**ACT12 (continued):****Narrative Requirements:**

Condition No.	Condition
	In arid, semiarid, and drought-stricken areas where initiating vegetative stabilization measures immediately is infeasible, alternative stabilization measures must be employed if specified by the permitting authority. [11 Miss. Admin. Code Pt. 6, R. 1]
T-17	INFEASIBLE means not technologically possible, or not economically practicable and achievable in light of best industry practices. [11 Miss. Admin. Code Pt. 6, R. 1]
T-18	LARGE CONSTRUCTION ACTIVITY includes clearing, grading, grubbing, and excavating resulting in a land disturbance that will disturb equal to or greater than five (5) acres of land or will disturb less than five (5) acres of total land area but is part of a larger common plan of development or sale that will ultimately disturb equal to or greater than five (5) acres. [11 Miss. Admin. Code Pt. 6, R. 1]
T-19	LARGER COMMON PLAN OF DEVELOPMENT OR SALE means a contiguous area where multiple separate and distinct construction activities are occurring under one plan. The plan in a common plan of development or sale is broadly defined as any announcement or piece of documentation (including a sign, public notice or hearing, sales pitch, advertisement, drawing, permit application, zoning request, computer design, etc.) or physical demarcation (including boundary signs, lot stakes, surveyor markings, etc.), indicating that construction activities may occur on a specific plot. [11 Miss. Admin. Code Pt. 6, R. 1]
T-20	LINEAR PROJECT includes the construction of roads, bridges, conduits, substructures, pipelines, sewer lines, towers, poles, cables, wires, connectors, switching, regulating and transforming equipment and associated ancillary facilities in a long, narrow area. [11 Miss. Admin. Code Pt. 6, R. 1]
T-21	MUNICIPAL SEPARATE STORM SEWER SYSTEM (MS4) means a conveyance or system of conveyances (including roads with drainage systems, municipal streets, catch basins, curbs, gutters, ditches, man-made channels, or storm drains): (i) Owned or operated by a State, city, town, borough, county, parish, district, association, or other public body (created by or pursuant to State law) having jurisdiction over disposal of sewage, industrial wastes, storm water, or other wastes, including special districts under State law such as a sewer district, flood control district or drainage district, or similar entity, or an Indian tribe or an authorized Indian tribal organization, or a designated and approved management agency under section 208 of the CWA that discharges to waters of the United States, (ii) Designed or used for collecting or conveying storm water, (iii) Which is not a combined sewer, and (iv) Which is not part of a Publicly Owned Treatment Works (POTW). [11 Miss. Admin. Code Pt. 6, R. 1]
T-22	NATIONAL POLLUTANT DISCHARGE ELIMINATION SYSTEM (NPDES) means the regulations under the Clean Water Act that prohibits discharge of pollutants into waters of the United States unless a special permit is issued. [11 Miss. Admin. Code Pt. 6, R. 1]
T-23	NOI is an acronym for "Notice of Intent" to be covered by this permit and is the mechanism used to apply for coverage under a general permit. [11 Miss. Admin. Code Pt. 6, R. 1]
T-24	NORMAL WORKING HOURS, for the purpose of this permit, means the hours that personnel are typically working at the project site (e.g., daylight hours, Monday through Friday, except recognized holidays). [11 Miss. Admin. Code Pt. 6, R. 1]

**ACT12 (continued):****Narrative Requirements:**

Condition No.	Condition
T-25	<p>OWNER or OPERATOR for the purpose of this permit and in the context of storm water associated with construction activity, means any party associated with a construction project that meets either of the following two criteria:</p> <p>(1) The party has operational control over construction plans, specifications, and installation of BMPs including the ability to make modifications to those plans and specifications; or</p> <p>(2) The party has day to day operational control of those activities at a project which are necessary to ensure compliance with a storm water pollution prevention plan for the site or other permit conditions (e.g., they are authorized to direct workers at a site to carry out activities required by the SWPPP or comply with other permit conditions). This definition is provided to inform coverage recipients of MDEQ's interpretation of how the regulatory definitions of "owner or operator" and "facility or activity" are applied to discharges of storm water associated with construction activity. [11 Miss. Admin. Code Pt. 6, R. 1]</p>
T-26	<p>PERMIT BOARD means the Mississippi Environmental Quality Permit Board established pursuant to Miss. Code Ann. 49-17-28. [11 Miss. Admin. Code Pt. 6, R. 1]</p>
T-27	<p>POLLUTANT is defined at 40 CFR 122.2. A partial listing from this definition includes: dredged spoil, solid waste, sewage, garbage, sewage sludge, chemical wastes, biological materials, heat, wrecked or discarded equipment, rock, sand, sediment, silt, cellar dirt, and industrial or municipal waste. [11 Miss. Admin. Code Pt. 6, R. 1]</p>
T-28	<p>POLYMER FLOCCULANT, for the purpose of this permit, is a chemical that when added to storm water containing small suspended particles (e.g., fine silts and clays) causes the particles to stick together and fall out of suspension, reducing the overall turbidity of the storm water discharge. [11 Miss. Admin. Code Pt. 6, R. 1]</p>
T-29	<p>QUALIFIED PERSONNEL means a person knowledgeable in the principles and practice of erosion and sediment controls who possesses the skills to assess conditions at the construction site that could impact storm water quality and to assess the effectiveness of any sediment and erosion control measures selected to control the quality of storm water discharges from the construction activity. [11 Miss. Admin. Code Pt. 6, R. 1]</p>
T-30	<p>STATE LAW means The Mississippi Air and Water Pollution Control Law, specifically, Miss. Code Ann 49-17-1 through 49-17-43, and any subsequent amendments. [11 Miss. Admin. Code Pt. 6, R. 1]</p>
T-31	<p>STEEP SLOPES, as used in this permit, means slopes or grades steeper than (3:1). [11 Miss. Admin. Code Pt. 6, R. 1]</p>

**ACT12 (continued):****Narrative Requirements:**

Condition No.	Condition
T-32	STORM WATER means rainfall runoff, snowmelt runoff, and surface runoff. [11 Miss. Admin. Code Pt. 6, R. 1]
T-33	STORM WATER ASSOCIATED WITH CONSTRUCTION ACTIVITY as used in this permit, refers to a discharge of pollutants in storm water from areas where soil disturbing activities (e.g., clearing, grading, grubbing, or excavation), construction materials or equipment storage or maintenance (e.g., stock piles, borrow area, concrete truck chute wash down, fueling) are located. [11 Miss. Admin. Code Pt. 6, R. 1]
T-34	STORM WATER POLLUTION PREVENTION PLAN (SWPPP) means a plan that includes site map(s), an identification of construction/contractor activities that could cause pollutants in the storm water, and a description of measures or practices to control these pollutants. [11 Miss. Admin. Code Pt. 6, R. 1]
T-35	SUBMITTED means the document is postmarked on or before the applicable deadline, except as otherwise specified. [11 Miss. Admin. Code Pt. 6, R. 1]
T-36	SUCCESSFUL COMPLETION OF ALL PERMANENT EROSION AND SEDIMENT CONTROLS means when land disturbing construction activities have been completed and disturbed areas have been stabilized with no significant erosion occurring. [11 Miss. Admin. Code Pt. 6, R. 1]
T-37	TEMPORARY STABILIZATION means practices such as seeding, mulching and erosion control blankets or mats that are used to stabilize exposed areas in which construction activity has been temporarily suspended. [11 Miss. Admin. Code Pt. 6, R. 1]
T-38	TOPSOIL means the top layer of undisturbed soil, consisting of a high percentage of organic matter, which is conducive to plant growth. [11 Miss. Admin. Code Pt. 6, R. 1]
T-39	TOTAL MAXIMUM DAILY LOAD (TMDL) means the maximum daily amount of a pollutant that can enter a water body so that the water body will meet and continue to meet state water quality standards. [11 Miss. Admin. Code Pt. 6, R. 1]
T-40	TURBIDITY is an expression of the optical property that causes light to be scattered and absorbed rather than transmitted with no change in direction of flux level through the sample caused by suspended and colloidal matter such as clay, silt, finely divided organic and inorganic matter and plankton and other microscopic organisms. [11 Miss. Admin. Code Pt. 6, R. 1]
T-41	UPSET means an exceptional incident in which there is unintentional and temporary noncompliance with technology based permit effluent limitations because of factors beyond the reasonable control of the coverage recipient. An upset does not include noncompliance to the extent caused by operational error, improperly



**ACT12 (continued):****Narrative Requirements:**

Condition No.	Condition
	designed treatment facilities, inadequate treatment facilities, lack of preventive maintenance, or careless or improper operation. [11 Miss. Admin. Code Pt. 6, R. 1]
T-42	WATERS OF THE STATE means all waters within the jurisdiction of this State, including all streams, lakes, ponds, wetlands, impounding reservoirs, marshes, watercourses, waterways, wells, springs, irrigation systems, drainage systems, and all other bodies or accumulations of water, surface and underground, natural or artificial, situated wholly or partly within or bordering upon the State, and such coastal waters as are within the jurisdiction of the State, except lakes, ponds, or other surface waters which are wholly landlocked and privately owned, and which are not regulated under the Federal Clean Water Act (33 U.S.C.1251 et seq.). [11 Miss. Admin. Code Pt. 6, R. 1]
T-43	11 Miss. Admin. Code Pt. 6, R.1 means the State of Mississippi's Wastewater Regulations for National Pollutant Discharge Elimination System (NPDES) Permits, Underground Injection Control (UIC) Permits, State Permits, Water Quality Based Effluent Limitations and Water Quality Certifications. [11 Miss. Admin. Code Pt. 6, R. 1]

**ATTACHMENT D**

**Weekly Inspection Forms**

Keep a Copy Available at the Permitted Facility or Locally Available  
Submit the Inspection Reports Only if Requested by the Mississippi Department of Environmental Quality (MDEQ)

**LARGE CONSTRUCTION GENERAL PERMIT  
SITE INSPECTION AND CERTIFICATION FORM  
COVERAGE NUMBER (MSR10 \_\_\_\_)**



**INSTRUCTIONS**

Results of construction storm water inspections required by ACT6 of this permit shall be recorded on this report form and kept with the Storm Water Pollution Prevention Plan (SWPPP) in accordance with the inspection documentation provisions of ACT9 of the this permit. Inspections shall be performed at least weekly for a minimum of four inspections per month. The coverage number must be listed at the top of all Inspection and Certification Forms.

**COVERAGE RECIPIENT INFORMATION**

OWNER/PRIME CONTRATOR NAME: Rankin First/Cleer Creek Construction  
PROJECT NAME: West Rankin Industrial Park Clearing & Grubbing  
PROJECT STREET ADDRESS: Old Whitfield Road  
PROJECT CITY: Pearl PROJECT COUNTY: Rankin  
OWNER/PRIME CONTRACTOR MAILING ADDRESS: \_\_\_\_\_  
MAILING CITY: \_\_\_\_\_ STATE: \_\_\_\_\_ ZIP: \_\_\_\_\_  
CONTACT PERSON: \_\_\_\_\_ CONTACT PHONE NUMBER: (\_\_\_\_) \_\_\_\_\_  
EMAIL ADDRESS: \_\_\_\_\_

**INSPECTION DOCUMENTATION**

DATE (mo/day/yr)	TIME (hr:min AM/PM)	ANY DEFICIENCIES? (CHECK IF YES)	INSPECTOR(S)
		<input type="checkbox"/>	
		<input type="checkbox"/>	
		<input type="checkbox"/>	
		<input type="checkbox"/>	
		<input type="checkbox"/>	
		<input type="checkbox"/>	

Deficiencies Noted During any Inspection (give date(s); attach additional sheets if necessary): \_\_\_\_\_

\_\_\_\_\_

Corrective Action Taken or Planned (give date(s); attach additional sheets if necessary): \_\_\_\_\_

\_\_\_\_\_

Based upon this inspection, which I or personnel under my direct supervision conducted, I certify that all erosion and sediment controls have been implemented and maintained, except for those deficiencies noted above, in accordance with the Storm Water Pollution Prevention Plan (SWPPP) and sound engineering practices as required by the above referenced permit. I further certify that the LCNOI and SWPPP information is up to date.

I certify under penalty of law that this document and all attachments were prepared under my direction or supervision in accordance with a system designed to assure that qualified personnel properly gather and evaluate the information submitted. Based on my inquiry of the person or persons responsible for gathering the information, the information submitted is, to the best of my knowledge and belief, true, accurate and complete. I am aware that there are significant penalties for submitting false information, including the possibility of fines and imprisonment for knowing violations.

\_\_\_\_\_  
Authorized Signature

\_\_\_\_\_  
Date

\_\_\_\_\_  
Printed Name

\_\_\_\_\_  
Title

## **ATTACHMENT E**

### **Request for Termination of Coverage**

# Request for Termination (RFT) of Coverage



**LARGE CONSTRUCTION GENERAL PERMIT**  
**Coverage No. MSR10** \_\_\_\_\_ **County** \_\_\_\_\_  
(Fill in your Certificate of Coverage Number and County)

This form must be submitted within thirty (30) days of achieving final stabilization (see ACT10, S-1 of general permit). Failure to submit this form is a violation of permit conditions.

The signatory of this form must be the owner or operator (prime contractor) who is the current coverage recipient (rather than the project manager or environmental consultant).

(Please Print or Type)

**Project Name:** \_\_\_\_\_

**Physical Site Street Address (if not available, indicate nearest named road):** \_\_\_\_\_

**City:** \_\_\_\_\_ **County:** \_\_\_\_\_ **Zip:** \_\_\_\_\_

**Coverage Recipient Company Name:** \_\_\_\_\_

**Street Address / P.O. Box:** \_\_\_\_\_

**City:** \_\_\_\_\_ **State:** \_\_\_\_\_ **Zip:** \_\_\_\_\_

**Coverage Recipient Contact Name and Position:** \_\_\_\_\_ **Tel. #:** (\_\_\_\_) \_\_\_\_\_

Has another owner(s) or operator(s) assumed control over all areas of the site that have not reached final stabilization?

RESIDENTIAL SUBDIVISIONS:

**not applicable**

☐ YES. A copy of the Registration Form for Residential Lot Coverage for each lot or out parcel that has been sold and a site map, indicating which lots have been sold, are attached.

☐ NO. Coverage may not be terminated until all areas have reached final stabilization.

COMMERCIAL DEVELOPMENT:

☐ YES. A copy of the site map, indicating which out-parcels have been sold, is attached.

☐ NO. Coverage may not be terminated until all areas have reached final stabilization.

I certify under penalty of law that this document and all attachments were prepared under my direction or supervision in accordance with a system designed to assure that qualified personnel properly gathered and evaluated the information submitted. Based on my inquiry of the person or persons who manage the system, or those persons directly responsible for gathering the information, the information submitted is, to the best of my knowledge and belief, true, accurate and complete. I am aware that there are significant penalties for submitting false information, including the possibility of fines and imprisonment for knowing violations. I understand that by submitting this Request for Termination and receiving written confirmation, I will no longer be authorized to discharge storm water associated with construction activity under this general permit. Discharging pollutants associated with construction activity to waters of the State without proper permit coverage is a violation of state law. I also understand that the submittal of this Request for Termination does not release an owner or operator from liability for any violations of this permit or the Clean Water Act.

\_\_\_\_\_  
Authorized Name (Print)

\_\_\_\_\_  
Telephone

\_\_\_\_\_  
Signature

\_\_\_\_\_  
Date Signed

<sup>1</sup>This application shall be signed according to the General Permit, ACT11, T-7 as follows:

- For a corporation, by a responsible corporate officer.
- For a partnership, by a general partner.
- For a sole proprietorship, by the proprietor.
- For a municipal, state or other public facility, by principal executive officer, mayor, or ranking elected official.

After signing please mail to:

Chief, Environmental Permits Division  
MS Department of Environmental Quality, Office of Pollution Control  
P.O. Box 2261  
Jackson, Mississippi 39225